



17MY ALL-NEW JAGUAR XF PRODUCT BRIEF

JLRIL/P&M/Ex/Product & Marketing 210916

21.09.16

Jaguar Land Rover India
For Internal and Dealer Communication Only

Confidential ©2016

17MY All-New Jaguar XF Index



- Overview
- Derivatives
- Exterior
- Interior
- Top 5 Benefits
- Key Features
- All-New XF vs 15MY XF
- All-New XF vs XE
- Trim Walk
- Advisory



17MY All-New Jaguar XF

Overview



The all-new Jaguar XF is an utterly seductive combination of design, performance and technology to create a car that offers both excitement and efficiency

DESIGN

- XF demonstrates the Jaguar principles of design purity. Strong lines radiate dynamic character and enhance its capabilities – be it improving aerodynamics, visibility, stability or safety
- XF is available with adaptive LED headlights featuring Jaguar signature 'J' blade Daytime Running Lights to give XF a striking on-road presence. At the rear, XF's tail lights feature a distinctive, Jaguar F-TYPE inspired, double roundel and intersecting horizontal detail
- XF's sweeping exterior design is naturally aerodynamic. Its advanced form enhances handling, dynamics and refinement. Even the boot lid's height and pitch, as well as its overall curvature and subtle spoiler, are designed to reduce drag and increase downforce
- Contemporary Craftsmanship : XF's interior offers outstanding comfort and a sense of wellbeing. The number of switches and buttons is kept to a minimum to keep the look clean and tidy, as well as making them easy to use. Leather and finishes are selected with the greatest care to ensure that, inside XF, everything is luxurious to the touch
- Greater Interior Space : The rear of XF's cabin is a destination of luxury, choice and space. Compared with the previous generation XF, rear knee room has increased by 24 mm, making it among the best in class. Rear legroom has increased by 15 mm, adding up to greater comfort and wellbeing for passengers. With Configurable Interior Mood Lighting you'll have a choice of ten interior colours

17MY All-New Jaguar XF

Overview



PERFORMANCE

- Ingenium Diesel Engine : XF is offered with the new Ingenium 2.0 I 4-cylinder Turbocharged Diesel engine that delivers a power output of 132 kW. Ingenium is Jaguar Land Rover's new breed of engines designed for effortless performance, refinement and efficiency. With advanced technology and all-aluminium construction, Ingenium delivers impressive fuel consumption and CO₂ emissions. Up to 20 kg lighter than equivalent previous generation engines. **Ingenium engine offers fuel economy that is one of the best in class**



| Fuel Economy | All-New Jaguar XF (2.0 I Diesel) | BMW 5 Series (520d) | Audi A6 (35 TDI) | Mercedes E Class 250 CDI |
|--------------|-------------------------------------|------------------------|---------------------|-----------------------------|
| km/l | 19.33 | 18.12 | 18.53 | NA |

- Choice of Petrol Engine : XF's 4-cylinder petrol engine offers 177 kW of power and responsiveness throughout the rev range, while improving efficiency
- Lightweight Aluminium Architecture : Jaguar has been at the forefront of aluminium car construction for more than a decade. Our latest innovation is Lightweight Aluminium Architecture, which is significantly lighter, stronger and 28 percent stiffer than the structure used in XF's predecessor



17MY All-New Jaguar XF Overview



TECHNOLOGY

- Infotainment InControl Technologies: InControl is our suite of advanced technologies that links both you and your XF to the wider world. Two InControl infotainment systems are available: InControl Touch on the Prestige derivative and InControl Touch Pro on the Portfolio derivative
- Meridian Sound Systems : The new 380 W Sound System with 11 speakers is standard on the Prestige Derivative and the digital 825 W Surround Sound System with 17 speakers is standard on the Portfolio Derivative
- All Surface Progress Control :Unique in this class of car, Jaguar's All Surface Progress Control (ASPC) technology is a low speed cruise control that helps XF to cope with low traction situations



ALBUMS

14:56

Young before your time
Corvidae

Signal strength, Wi-Fi, Bluetooth, TA, 3G

Electric Storm



38°C 38°
16°

York





17MY All-New Jaguar XF Derivatives

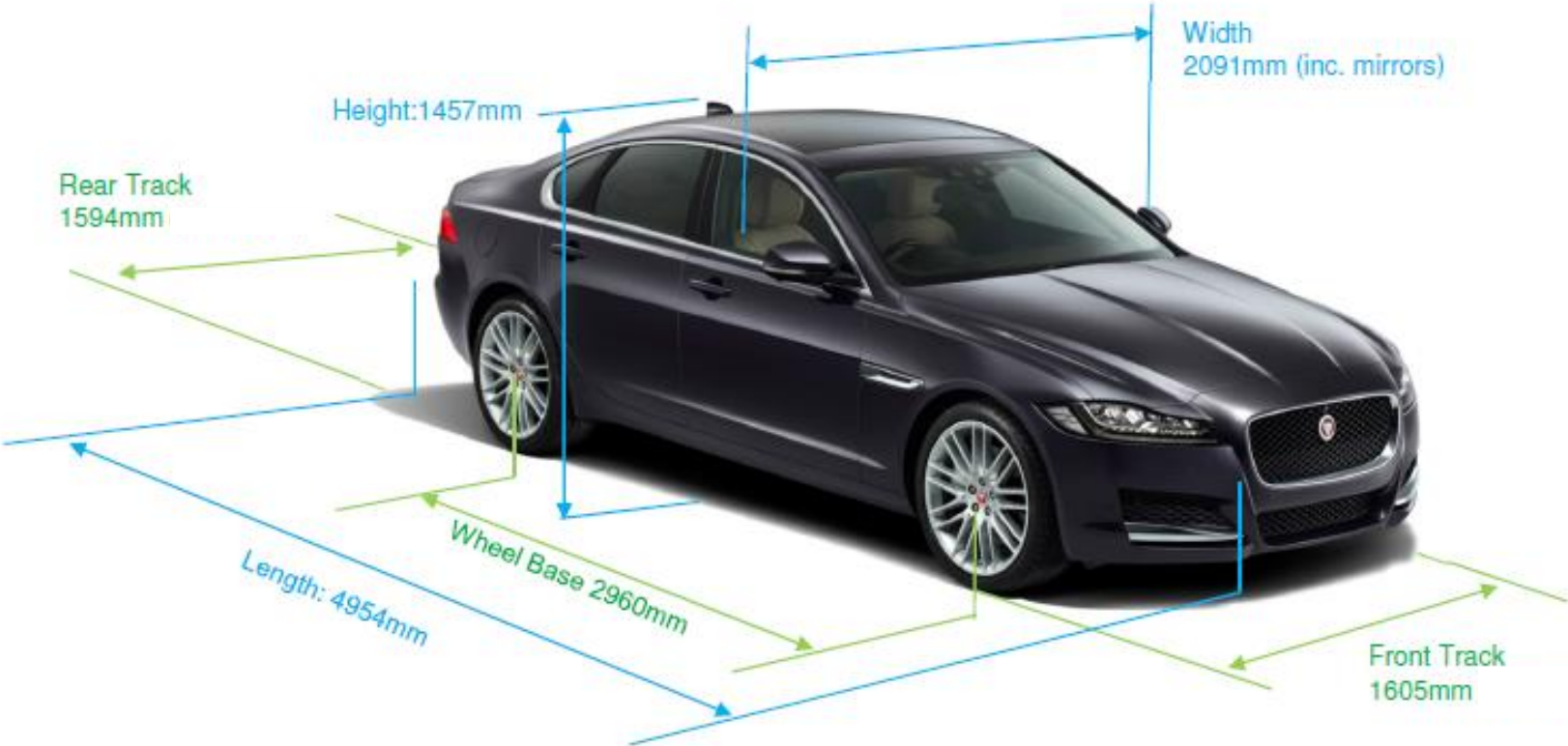


- 17MY All-New Jaguar XF is available in three derivatives (CBU) in two power-trains. Specifications & Dimensions are given below

| Engine Specification | Pure | Prestige | Portfolio | Prestige | Portfolio |
|-------------------------------|-------------------|----------|-----------|-------------------|-----------|
| Fuel | Diesel | | | Petrol | |
| Engine Capacity (cc) | 1 999 | | | 1 999 | |
| Maximum Power (kW @ r/min) | 132 @ 4 000 | | | 177 @ 5 500 | |
| Maximum Torque (Nm @ r/min) | 430 @ 1 750-2 500 | | | 340 @ 1 750-2 000 | |
| Dimensions in mm | | | | | |
| Overall Length (with tow bar) | 5 067 | | | | |
| Wheelbase | 2 960 | | | | |
| Overall Width with Mirrors | 2 091 | | | | |
| Overall Height | 1 457 | | | | |



17MY All-New Jaguar XF Dimensions



17MY All-New Jaguar XF

Exterior



Luxury trim

*Pure
Prestige
Portfolio*

Rear valence is 'core'



Bright Chrome DLO
(Black pack optional)

No side sills

Bright chrome side vent
(Black pack optional)

'Luxury' front bumper
(Black pack optional)

Bright chrome 'blades'
(Black pack optional)

See the grill explanation



Grained Black Radiator Grille with Chrome Surround (Pure)



Chrome Radiator Grille with Chrome Surround (Prestige & Portfolio)

Grill Explanation

17MY All-New Jaguar XF

Interior



- All-New Jaguar XF was designed from the outset to place greater emphasis on the rear compartment –providing more room, more comfort than exists on XF today. All-New Jaguar XF is a step up from XF
- XF delivered industry-first features such as ambient illumination, halo illumination and rotating vents, the intention with All-New Jaguar XF is to build on those core themes
- Beltline through rear door dropped by 26mm and 12mm at the front compared to XF, increasing depth of the DLO
- Perception of the interior space being greater than XF is as important as the absolute dimensions
- All-New Jaguar XF 2nd row has 15mm more legroom, 24 more knee room and 27mm more rear headroom than XF, making All-New Jaguar XF best in class for rear knee room
- A broad aluminium finisher differentiates All-New Jaguar XF from XE running across the dash and into the doors, emphasizing the visual width of the cabin and the design DNA to current XF
- High quality materials used through out the cabin with customer choices of veneers, aluminium trims, leathers and high quality finishers provide high grade luxury cabin

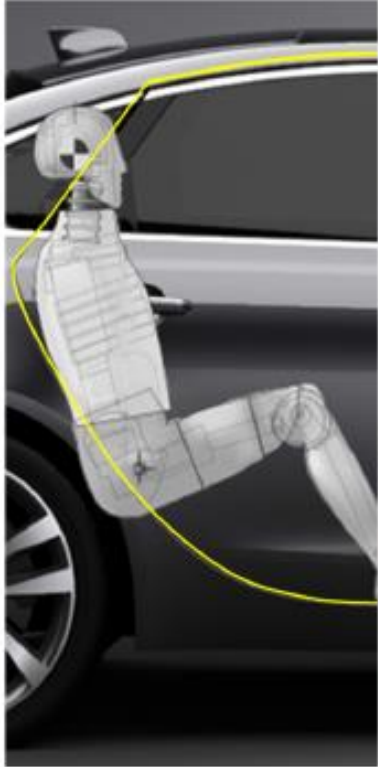
17MY All-New Jaguar XF Interior





17MY All-New Jaguar XF

The Top '5' Benefits



GREATER SPACE



LIGHTER



TECHNOLOGY



BETTER EFFICIENCY



MORE CHOICE

17MY All-New Jaguar XF

Key Features



- Adaptive LED Headlights with LED 'J' Blade Daytime Running Lights
- Infrared Reflective Windscreen
- Electric Tilt/Slide Sunroof
- 14 Way / 14 Way Electric Front Luxury Seats
- Perforated Windsor Leather Seats
- 40:20:40 Split Fold Rear Seat
- Windsor Leather Wrapped Instrument Panel Topper
- Surround Camera system
- Park Assist
- Configurable Interior Mood Lighting
- InControl Touch Pro - Meridian™ Digital Surround Sound System, 825 W
- InControl Touch Pro (SSD) Navigation
- 25.9 cm (10.2) Capacitive Multi-touch Display
- 31.24 cm (12.3) HD Virtual Instrument Display
- InControl Apps
- Head-Up Display
- Jaguar Smart Key System with Keyless Entry





17MY All-New Jaguar XF

All-New XF vs 15MY XF



All-New Jaguar XF

Jaguar XF
15my



1. Narrow rear lights, uplifted deck lid and restyle bumper shut line give a lighter look, sleeker look to rear
2. A 26mm lower rear window waistline increases feeling of ambience inside the cabin
3. Longer wheelbase adds more rear package space, leading to class leading knee room and giving effect of overall length (yet 7mm shorter)
4. Roofline maintains coupe styling whilst providing more space internally to rear occupants
5. By moving front axle forward in car line, the visual presence of the side vents is increased. Giving more internal space as well as visual length
6. More upright front end, gives a strong assertive graphic to the more mature modern stance and reduced overhang

17MY All-New Jaguar XF

All-New Jaguar XF vs XE- Front



All-New Jaguar XF



Inside edge of lights slopes down and **IN**

All-New XF has a strong graphic where the shoulder line crosses the bonnet and down the face to surround the grill

All-New XF has a 'scoop' graphic down to the lower chin creating a vertical face

All-New XF's 'blades' are in the lower portion of the lower grill



Jaguar XE

Inside edge of lights slopes down and **OUT**



XE lights are recessed into the bumper – providing a strong horizontal 'eyebrow' and the signature *menacing* look

XE 'blades' are in upper section of lower grill

XE lower grill vertical is a sharp 'blade' and non-continuous

Note: Photos taken at different heights so slight variation is seen in grills / rear seats. They are similar height in reality.

17MY All-New Jaguar XF

All-New Jaguar XF vs XE- Side



All-New Jaguar XF



Greater length in rear deck lid and light clusters gives more presence behind rear wheel

Longer rear door and lower waste line

Pronounced shoulder line not seen on XE

Increased wheelbase

Jaguar XE



Rear door shut line continues to end of window graphic

XE has a more pronounced 'cab' rearward stance with the short rear overhang and shorter rear doors

17MY All-New Jaguar XF

All-New Jaguar XF vs XE- Rear



All-New Jaguar XF

Jaguar XE





17MY All-New Jaguar XF

Trim Walk (1/2)



| Jaguar XF | Pure | Prestige | Portfolio | Prestige | Portfolio |
|---|------|----------|-----------|----------|-----------|
| Transmission & Driving Dynamics | | | | | |
| 8-Speed Automatic Transmission with Jaguar Sequential Shift™ & Automatic Stop/Start | ■ | ■ | ■ | ■ | ■ |
| Cruise Control | ■ | ■ | ■ | ■ | ■ |
| All Surface Progress Control (ASPC) | ■ | ■ | ■ | ■ | ■ |
| Torque Vectoring by Braking & Hill Launch Assist | ■ | ■ | ■ | ■ | ■ |
| Jaguar Drive Control™ | ■ | ■ | ■ | ■ | ■ |
| Power Steering (inc EPAS) & Speed Proportional Steering | ■ | ■ | ■ | ■ | ■ |
| Dynamic Stability Control & Traction Control | ■ | ■ | ■ | ■ | ■ |
| Exterior Features | | | | | |
| Infrared Reflective Windscreen | - | - | ■ | - | ■ |
| Auto-Dimming Heated Door Mirrors with Power Fold & Approach Lights | - | - | - | - | - |
| Auto-Dimming Heated Door Mirrors with Power Fold, Memory & Approach Lights | - | ■ | ■ | ■ | ■ |
| Electric Tilt/Slide Sunroof | - | ■ | ■ | ■ | ■ |
| Grained Black Radiator Grille with Chrome Surround | ■ | - | - | - | - |
| Chrome Radiator Grille with Chrome Surround | - | ■ | ■ | ■ | ■ |
| Chrome Side Window Surround, Side Power Vents & Bootlid Finisher | ■ | ■ | ■ | ■ | ■ |
| Heated Rear Screen | ■ | ■ | ■ | ■ | ■ |
| Rain Sensing Windscreen Wipers | ■ | ■ | ■ | ■ | ■ |
| Headlamps & Lighting | | | | | |
| Bi-Function Xenon Headlights with LED 'J' Blade Daytime Running Lights | ■ | ■ | - | ■ | - |
| Adaptive LED Headlights with LED 'J' Blade Daytime Running Lights | - | ○ | ■ | ○ | ■ |
| Headlight Powerwash & Automatic Headlight On | ■ | ■ | ■ | ■ | ■ |
| Partial LED Rear Lights | ■ | ■ | ■ | ■ | ■ |
| Wheels & Tyres | | | | | |
| 43.18 cm (17) Lightweight 15 Spoke with Silver finish Wheel | ■ | - | - | - | - |
| 43.18 cm (17) Turbine 9 Spoke with Silver finish Wheel | - | ■ | ■ | ■ | ■ |
| 45.72 cm (18) Chalice 7 Twin-Spoke with Silver finish Wheel | - | - | - | - | ■ |
| Alloy Space Saver Spare Wheel | ■ | ■ | ■ | ■ | ■ |
| Tyre Pressure Monitoring System (TPMS) | ■ | ■ | ■ | ■ | ■ |
| Locking Wheel Nuts | ■ | ■ | ■ | ■ | ■ |
| Interior Seating & Finishers | | | | | |
| Luxtec Seats | ■ | - | - | - | - |
| Perforated Taurus Leather Seats | - | ■ | ■ | ■ | ■ |
| Perforated Windsor Leather Seats | - | - | ■ | - | ■ |
| Taurus Grain Wrapped Instrument Panel Topper | - | - | ■ | ■ | ■ |
| Windsor Leather Wrapped Instrument Panel Topper | - | - | - | - | ■ |
| 10 Way / 10 Way Electric Front Seats | - | ■ | ■ | ■ | ■ |
| 14 Way / 14 Way Electric Front Luxury Seats (incl. 4-Way Electric Lumbar) | - | - | ■ | - | ■ |
| 4-Way Electric Lumbar Adjust | - | ■ | ■ | ■ | ■ |
| Driver Seat Memory | - | ■ | ■ | ■ | ■ |
| Driver & Passenger Seat Memory | - | ■ | ■ | ■ | ■ |
| Fixed Rear Seat | - | ■ | ■ | ■ | ■ |
| 40:20:40 Split Fold Rear Seat | - | - | ■ | - | ■ |
| Rear Armrest with Twin Cupholders | ■ | ■ | ■ | ■ | ■ |
| Metal Treadplates with Jaguar Script | ■ | ■ | ■ | ■ | ■ |
| Illuminated Metal Treadplates with Jaguar Script | - | - | ■ | - | ■ |
| Carpet Mats | ■ | - | ■ | ■ | ■ |
| Premium Carpet Mats | - | - | ■ | - | ■ |
| Light Oyster Headlining | ■ | ■ | ■ | ■ | ■ |
| Morzine Headlining | ■ | ■ | ■ | ■ | ■ |
| Suedecloth Headlining | - | - | ■ | - | ■ |
| Gloss Black Veneer | ■ | - | - | - | ■ |
| Gloss Burr Walnut Veneer | - | ■ | - | ■ | - |
| Gloss Figured Ebony Veneer | - | - | ■ | - | ■ |
| Morse Code Aluminium Instrument Panel Finisher | ■ | ■ | ■ | ■ | ■ |

17MY All-New Jaguar XF

Trim Walk (2/2)



| Jaguar XF | Pure | Prestige | Portfolio | Prestige | Portfolio |
|---|------|----------|-----------|----------|-----------|
| Comfort & Convenience | | | | | |
| Front & Rear Parking Aid | ■ | ■ | ■ | ■ | ■ |
| Rear View Camera | - | ■ | - | ■ | - |
| Surround Camera System | - | - | ■ | - | - |
| Park Assist | - | - | ■ | - | ■ |
| 360 Degree Parking Aid | - | ■ | ■ | ■ | ■ |
| Jaguar Smart Key System - Keyless Start (Stop/Start button) | ■ | ■ | ■ | ■ | ■ |
| Jaguar Smart Key System with Keyless Entry | - | - | ■ | - | ■ |
| Interior Features | | | | | |
| Auto-Dimming Interior Rear View Mirror | ■ | ■ | ■ | ■ | ■ |
| 2-Zone Climate Control | ■ | ■ | ■ | ■ | ■ |
| Air Quality Sensor | - | ■ | ■ | ■ | ■ |
| Lockable Cooled Glovebox | - | ■ | ■ | ■ | ■ |
| Manual Rear Side Window Sunblinds | ■ | ■ | ■ | ■ | ■ |
| Electric Rear Window Sunblind | ■ | ■ | ■ | ■ | ■ |
| Electrically Adjustable Steering Column | - | ■ | ■ | ■ | ■ |
| Multi-Function Softgrain Leather Steering Wheel | ■ | ■ | ■ | ■ | ■ |
| Interior Lighting | ■ | - | - | - | - |
| Interior Mood Lighting | - | - | - | - | - |
| Configurable Interior Mood Lighting | - | - | ■ | - | ■ |
| Smoker's Pack | ■ | ■ | ■ | ■ | ■ |
| Infotainment, Communication & Entertainment | | | | | |
| Analogue Dials with 12.7 cm (5) Full Colour TFT Display | ■ | ■ | - | ■ | - |
| 31.24 cm (12.3) HD Virtual Instrument Display | - | - | ■ | - | - |
| 20.32 cm (8) Capacitive Touchscreen | ■ | ■ | - | ■ | - |
| 25.9 cm (10.2) Capacitive Multi-touch Display | - | - | ■ | - | ■ |
| Head-Up Display | - | - | ■ | - | ■ |
| Incontrol Touch - Jaguar Sound System, 80W | ■ | - | - | - | - |
| Incontrol Touch - Meridian™ Sound System, 380 W | - | - | - | - | - |
| Incontrol Touch Pro - Meridian™ Digital Surround Sound System, 825 W | - | - | ■ | - | ■ |
| Incontrol Touch (SD) Navigation# | ■ | ■ | - | ■ | - |
| Incontrol Touch Pro (SSD) Navigation# | - | - | ■ | - | ■ |
| Incontrol Apps | - | ○ | ○ | ○ | ○ |
| Safety & Security | | | | | |
| Remote Control Central Locking with Deadlocks and Drive-Away Locking | ■ | ■ | ■ | ■ | ■ |
| Pedestrian Contact Sensing | ■ | ■ | ■ | ■ | ■ |
| Airbags - Driver & Front Passenger with Seat Occupant Detector for Passenger, Front Side, Full Length Side Window Curtain | ■ | ■ | ■ | ■ | ■ |
| Emergency Brake Assist | ■ | ■ | ■ | ■ | ■ |
| Perimeter Sensing Alarm & Immobiliser | ■ | ■ | ■ | ■ | ■ |
| 24x7 Road Side Assistance ¹ | ■ | ■ | ■ | ■ | ■ |

17MY All-New Jaguar XF Advisory



- All-New XF is available as CBU, hence range of options are available in Vista, brochure, configurator & microsite. In order to reduce complexity, we recommend not to opt for any optional features on the vehicle other than suggested 100% options
- Adaptive LED Headlights with LED 'J' Blade Daytime Running Lights is a suggested 100% cost option on Prestige derivative
- InControl Apps is a No Cost Option on Prestige & Portfolio derivatives
- Quotes for vehicle VINs fitted with optional feature must include cost of corresponding feature

THANK YOU

A silver Jaguar sedan is shown from a rear three-quarter view, driving on a winding road at night. The car's license plate reads 'TCC 221'. The road is illuminated by two tall streetlights, and the background features a cityscape with lights and a dark sky. The overall scene is set against a dark blue gradient background.

Important Note: The information in this document is extremely confidential and not meant for onward circulation. The data and information in here is continuously getting reviewed and updated and hence liable to changes without prior notice. Hence please treat this as indicative for reference only.