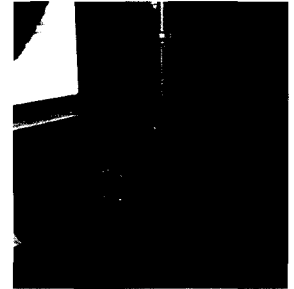



- The load will be raised on each **DOWN** stroke of the handle.
 - Watch the load and the Jack carefully. Stop jacking if either one starts to move. Do not continue raising the load unless it is safe to do so. When safe, stabilize and block the load.
7. When the load is raised to the desired height, place the handle in the upright clipped position against the steel standard (bar).
 8. Block the load securely.
 9. Lower the load onto the blocks.



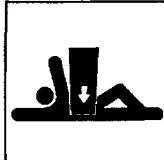
IMPORTANT:

Handle force required to raise 4,660 lbs. is 177 lbs. at 34" on the handle. Maximum rated load is 4,660 lbs. (2,273 kg) up to 48" (121 cm), tested to 7,000 lbs. (3,175 kg). Upper 12" of 60" jack is rated to 2,660 lbs. (1,209 kg) only, tested to 4,000 lbs. (1,818 kg). If you overload the Jack during operation, the shear bolt (located in the lifting mechanism) will break. If the shear bolt breaks, as it will at 7,000 lbs. (3,175 kg), the load should be supported, but the Jack's handle will drop freely. Use a Jack with a larger load capacity to lower the load safely to the ground. Do not replace the shear bolt with a bolt of greater strength as this could cause the jack to fail and drop the load. Always use a shear bolt supplied by Hi-Lift[®] Jack Company. Do not replace the shear bolt while the Jack is under load.

WORKING WITH A RAISED LOAD


DANGER

THIS JACK WILL NOT STABILIZE THE LOAD. You must chock and block (stabilize) the load to prevent it from moving or falling. If a raised load falls, it can cause serious injury or death.



Always follow the rules below when working with a raised load:

- Chock and block (stabilize) the load to prevent it from moving or falling.
- Make sure the load cannot slip, roll away, or fall.
- Never go underneath a raised load supported with just a Jack.
- Never push a raised load off the Jack.
- Make sure everyone is clear of the load before lowering.

ADDITIONAL INSTRUCTIONS FOR EQUIPMENT-AGRICULTURAL JACK

1. When attaching the Equipment-Agricultural jack to equipment using tubular mounting brackets, always place lock-pin COMPLETELY through the holes in the tubular mounting bracket.
2. ALWAYS secure the lock-pin in the tubular brackets with the safety cotter pin.
3. Chock the equipment that you have attached the Equipment-Agricultural jack to before lifting with the Equipment-Agricultural jack.

Side lift is limited to 2,000 lbs. (907 kg)

