

Easy to use compact camera with a 28mm wide-angle, 5x zoom lens



14
Mega Pixels

Fujinon
5X
Wide Zoom

Fujinon Wide Lens
28-140 mm

2.7" LCD
(230,000 dots)

ISO 3200

SR AUTO
Auto Scene Recognition

Face Detection

Auto Red-Eye Removal

Digital Image Stabilization

i-flash

20
Shooting Modes

Natural Light & with Flash

Micro Thumbnail

Image search

PANORAMA
Panorama Mode



Back



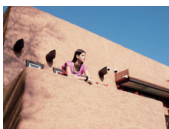
AA Battery Powered

AA batteries are available wherever you go in the world which means that you don't have to worry about forgetting your battery charger or running out of power on your travels.

The FinePix AX250 takes 2 x AA batteries. You'll get 180 shots with AA alkaline and 400 shots* with AA rechargeable batteries. (*2700mAh Ni-MH batteries)

5x Wide Zoom Fujinon Lens

Featuring world renowned high quality Fujinon optics, the FinePix AX250's 5x zoom will ensure you can zoom in on the action and capture it in perfect detail. Thanks to the 28mm wide-angle lens you can fit much more in the frame.



28mm wide angle

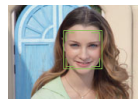


5x zoom

SR AUTO Automatic Scene Recognition

Intelligently recognizes 6 different scene types and optimizes the camera settings to take beautiful pictures at the touch of a button.

Portrait



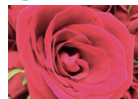
Landscape



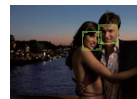
Night



Macro



Night Portrait



Backlit Portrait





Automatic Red-eye Removal

Red-eye removal eliminates any unsightly red-eye reflections to ensure flattering flash portraits and party pictures.



Lost photo opportunity



FinePix AX250



Digital Image Stabilization

Reduces image blur caused by handshake or when photographing moving subjects to deliver crisp, sharp images every time.



Conventional digital camera



FinePix AX250



Panorama Mode

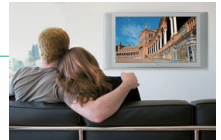
Create your own impressive panoramic photos in-camera. This convenient feature captures and combines three consecutive shots in to one stunning panoramic image and saves this to the memory card for you.



HDTV Compatible Photos & Movies

With the ability to capture both photos and movies in high definition 16:9 format, the FinePix AX250 lets you playback your images on a HDTV in breathtaking high definition quality.

*Optional HD player is required.



Option

HD Player HDP-L1



Natural Light & with Flash

Not sure whether to use a flash or not? Natural Light & with flash takes two photos in quick succession, one with flash and one without, so you can choose to keep whichever shot comes out the best.



Image Search

Quickly find your photos with the convenient Image Search function. Search by date, face, scene or type of data.

Specifications

Number of effective pixels ¹	14.0 million pixels
CCD sensor	1/2.3-inch CCD
Storage media	Internal memory (Approx. 24MB) / SD memory card / SDHC memory card ²
File format	Still image: JPEG (Exif Ver. 2.2 ³) / Movie: AVI (Motion JPEG) with sound / Audio: WAVE format, Monaural sound (Design rule for Camera File System compliant / DPOF-compatible)
Number of recorded pixels	Still image: 4,288 × 3,216 (14M) / 4,288 × 2,864 (3:2 format) / 4,288 × 2,416 (16:9 format) / 3,072 × 2,304 / 2,048 × 1,536 / 1,920 × 1,080 (16:9 format) / 1,600 × 1,200 / 640 × 480
Lens	Fujinon 5x optical zoom lens, F3.6 (Wide) - F5.9 (Telephoto)
Lens focal length	f=5.0 - 25.0 mm, equivalent to 28 - 140 mm on a 35 mm camera
Digital zoom	Approx. 6.7x
Aperture	Wide: F3.6 / F8, Telephoto: F5.9 / F13 with ND Filter
Focus distance (from lens surface)	Normal: Wide: Approx. 45 cm / 1.5 ft. to infinity, Telephoto: Approx. 80 cm / 2.6 ft. to infinity Macro: Wide: Approx. 10 cm - 80 cm / 3.9 in. - 2.6 ft., Telephoto: Approx. 60 cm - 1.0m / 2.0 ft. - 3.3 ft.
Sensitivity	Auto / Equivalent to ISO 100 / 200 / 400 / 800 / 1600 / 3200 (Standard Output Sensitivity) ISO3200: 3M pixels or lower (Number of recorded pixels)
Shooting modes	SR Auto, Auto, P, Portrait, Landscape, Sport, Night, Night (Tripod), Fireworks, Sunset, Snow, Beach, Panorama, Party, Flower, Text, Baby, Natural Light, Natural Light & with Flash, Movie
Shutter speed	(Auto mode) 1/4 sec. to 1/1400 sec. (All other modes) 8 sec. to 1/1400 sec.
LCD monitor	2.7-inch, Approx. 230,000 dots, color LCD monitor, Approx. 96% coverage
Movie recording	1,280 × 720 pixels / 640 × 480 pixels / 320 × 240 pixels (30 frames/sec.) with monaural sound
Power supply ⁴	2 × AA type alkaline batteries (included), 2 × AA type rechargeable Ni-MH batteries (commercially available)
Dimensions	93.0 (W) × 60.2 (H) × 27.8 (D) mm / 3.7 (W) × 2.4 (H) × 1.1 (D) in. (excluding accessories and attachments)
Weight	Approx. 115 g / 4.1 oz. (excluding accessories, battery and memory card)

¹: Number of effective pixels: The number of pixels on the image sensor which receive input light through the optical lenses, and which are effectively reflected in the final output date of the still image.

²: Please see the Fujifilm website to check memory card compatibility.

³: Exif 2.2 is a digital camera file format that contains a variety of shooting information for optical printing.

⁴: Manganese dry, nickel-cadmium and lithium AA batteries cannot be used with this product.