

**All BEFORE pictures were taken on 21<sup>st</sup> June 2023, before handing over car to workshop for replacing AC parts.**

**BEFORE**



**No scratches visible in the  
BEFORE picture**

**AFTER**



**Full of scratches and damage to  
the whole glass/plastic panel**



**BEFORE**



**AFTER**



Only swirl marks visible on the trim around center AC Vent

Multiple scratches and damages.  
**Yellow marks** – Deep scratches resembling deliberate hit with hard tools/  
**Red Marks** – Scratches resembling improper handling and usage of tools



**BEFORE**

**AFTER**



**Continued in next page**

**One existing scratch next to deity**







**BEFORE**



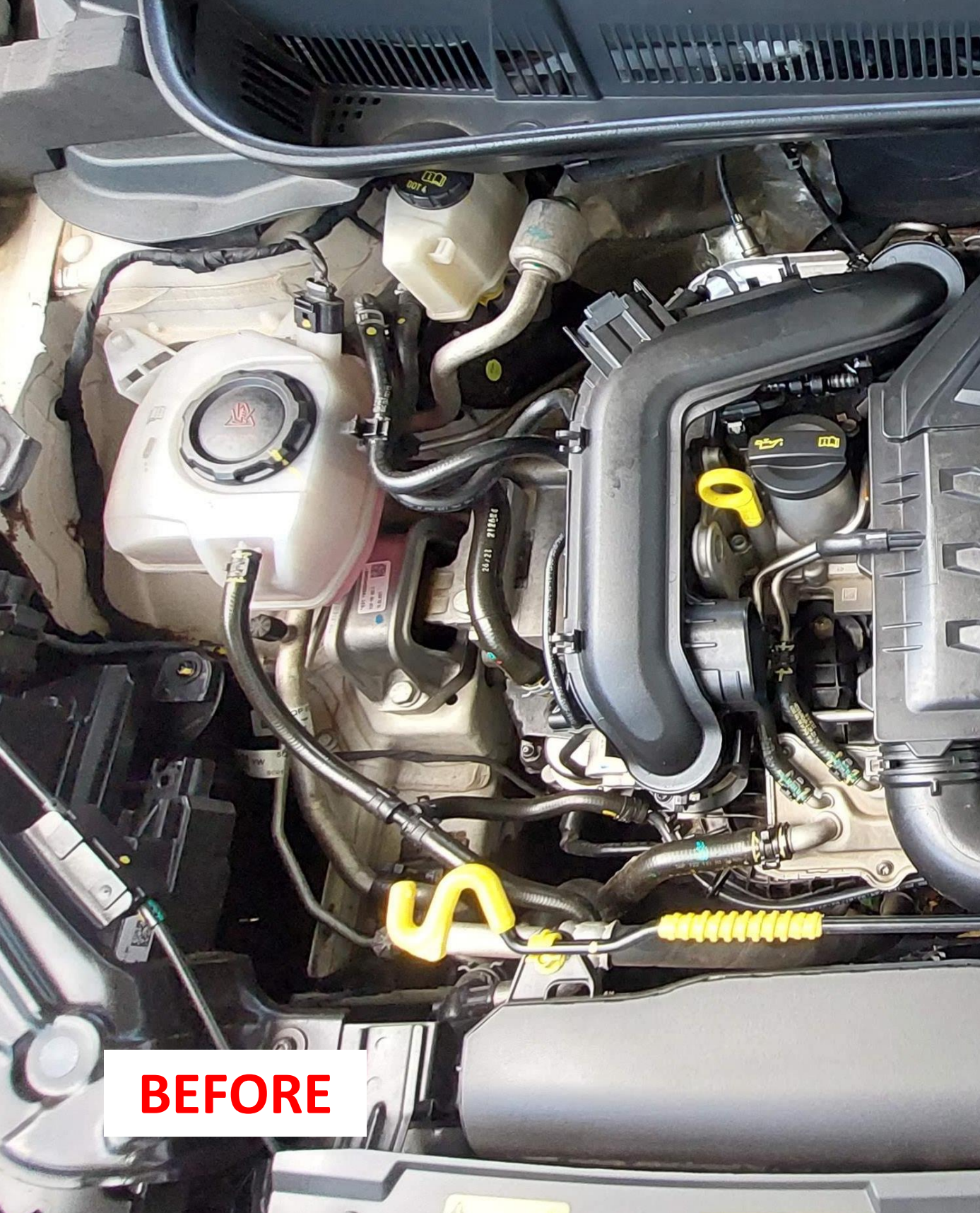
**No scratches/damages to trim  
below infotainment**

**AFTER**

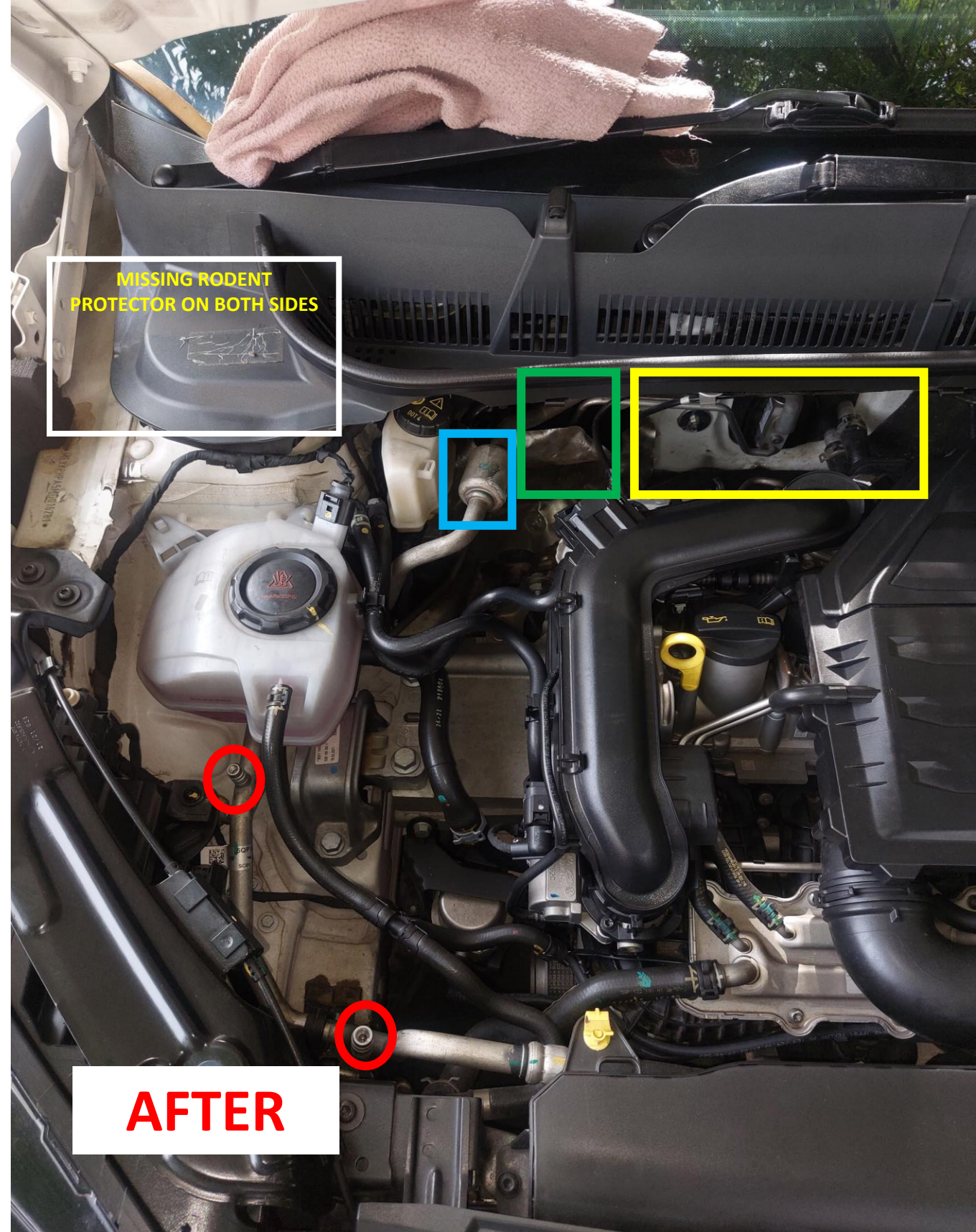


**Deep scratches in the full trim  
below infotainment**





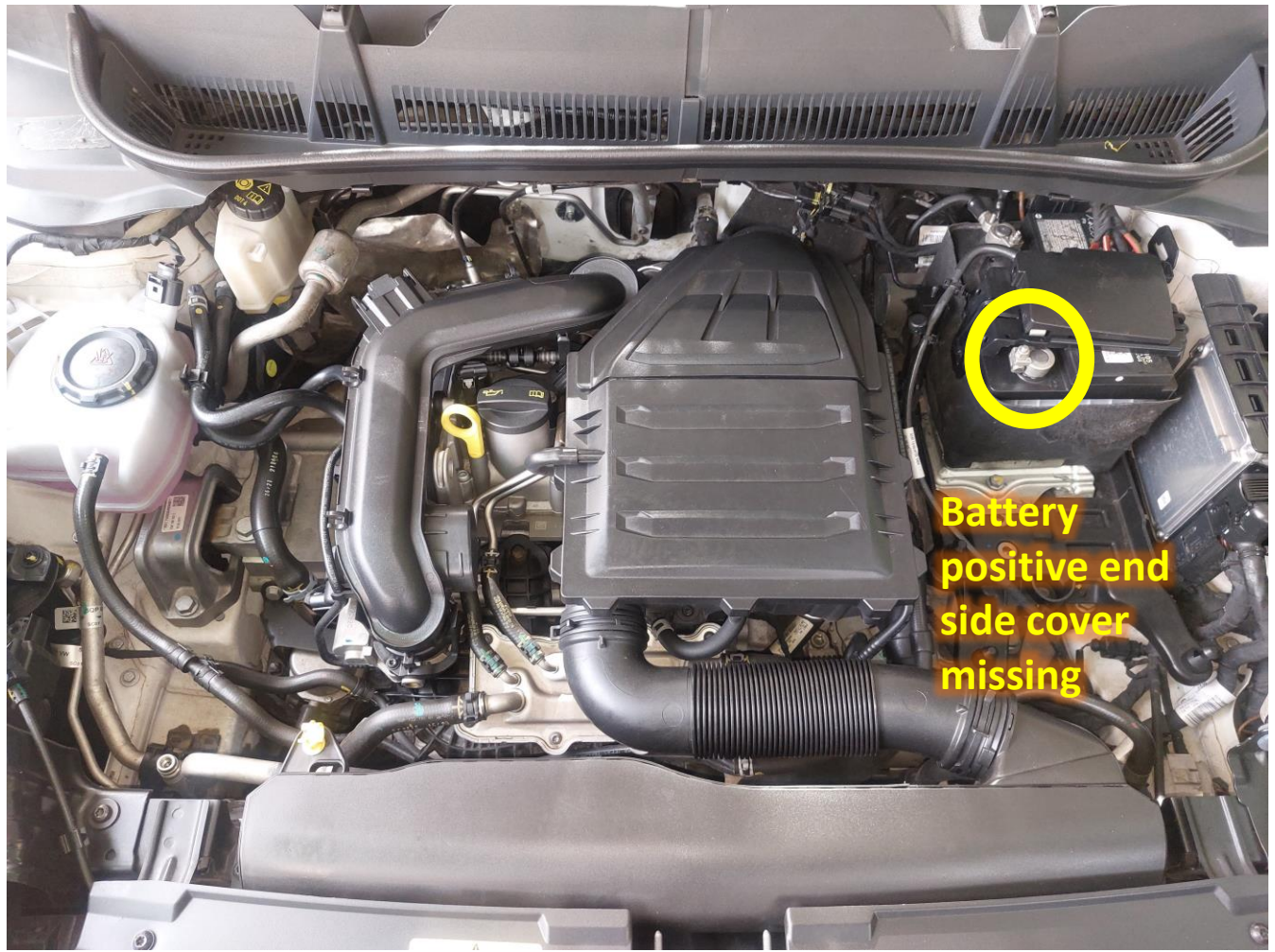
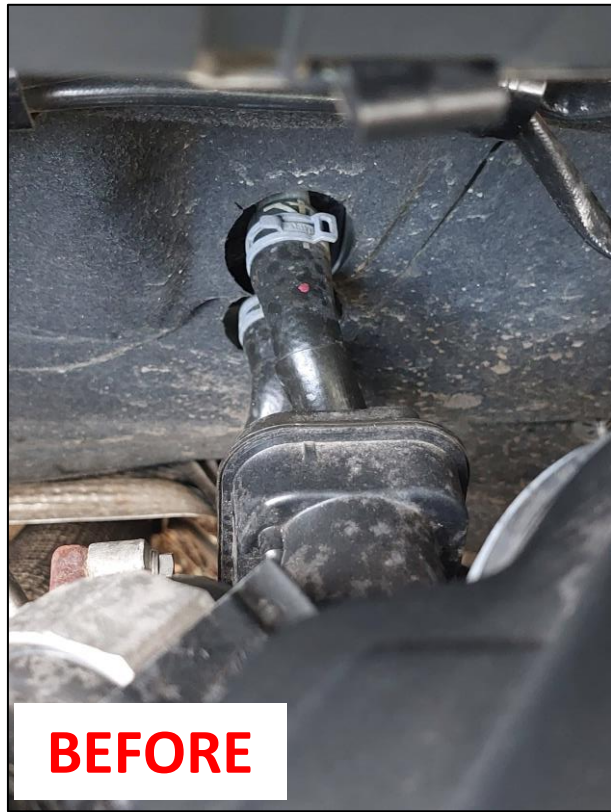
**BEFORE**



**AFTER**

- Red Circle:** Caps missing which were available before procedure. I do not want to risk another leakage due to a missing cap with quality of parts under question.
- Yellow Box:** Addition of new parts – A rectangular part is visible which wasn't available before. Observed this is a domestic made EGELHOF but I was apprised the whole system was made my MAHLE. Also missing black insulation cloth/cover
- Green Box:** The metallic heat insulator looks like is fixed with an after thought. The stock fit is missing.
- Blue Box:** Resemble bad handling of parts







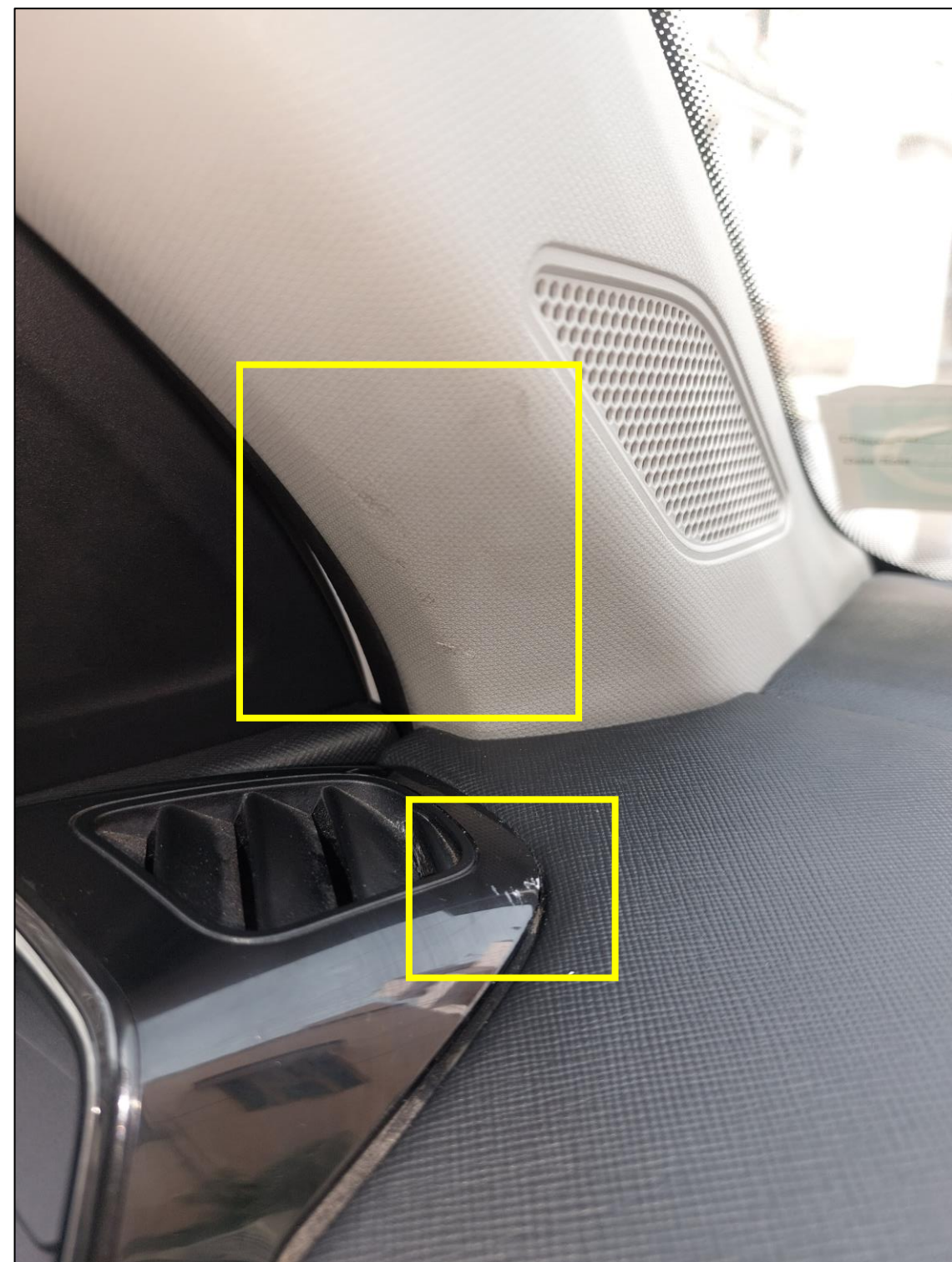


Damage to part outside glove box resembling damages due to bad usage of tools.

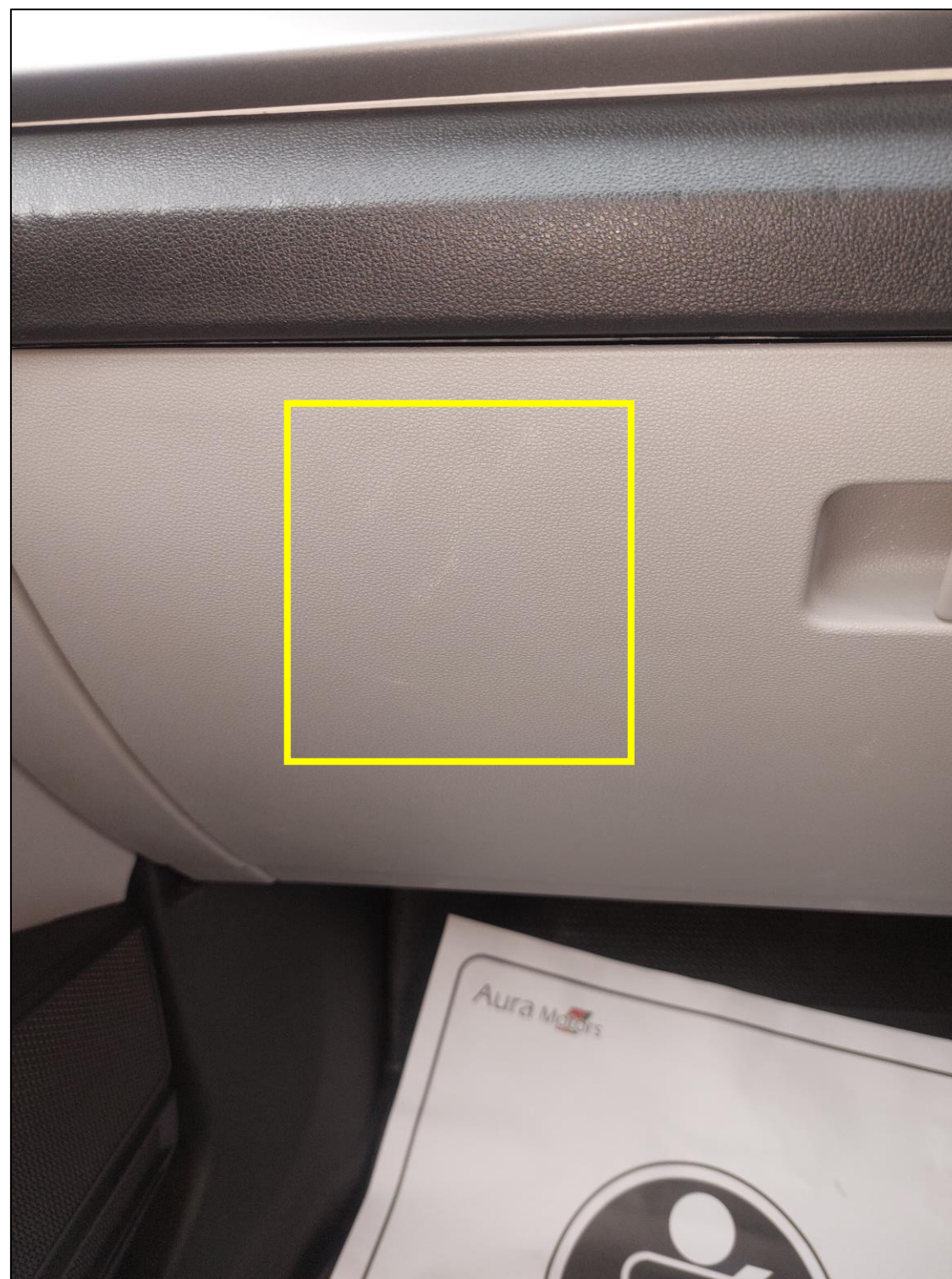


Multiple hard-pressed points resembling bad handling and placement post dis-assembly.





Damage to A-Pillar plastic trim. Probably due to bad handling, storage and assembly.



Damage to glove box