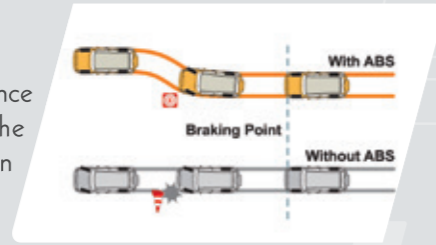


ANTI-LOCK BRAKING SYSTEM (ABS)

MAKES SAFE EVEN MORE SAFE.

This vehicle pushes the safety bar even higher. The assurance you get from its solid build is now supplemented by the Anti-lock Braking System (ABS). ABS helps maintain steering/directional control of vehicle by preventing wheel lock-up or skidding events.



TECH-UP YOUR DRIVE



AUDIO-ON-THE-GO

FILL YOUR DRIVE WITH MUSIC.

The audio system supports USB and AUX. It also comes with BlueTooth functionality so you can enjoy your music wirelessly.

DIGITAL CLUSTER

STAY IN TOUCH WITH YOUR VEHICLE.

The digital display provides the driver with all the information about the vehicle at one place.



DRIVER INFORMATION SYSTEM

KNOW YOUR VEHICLE INSIDE OUT.

The instrument cluster also contains a Driver Information System that provides instant details and alerts about current mileage, trip distance, open doors, etc. Now get to know your vehicle even better.



MIST SILVER



ROCKY BEIGE



LAKESIDE BROWN



DIAMOND WHITE

For more information, SMS "BOLERO POWER+" to 5757577. Mahindra & Mahindra Ltd., Mahindra Towers - 3rd Floor, Akurli Road, Kandivali (East), Mumbai - 400101.

twitter.com/mahindrabolero facebook.com/mahindrabolero youtube.com/BoleroMahindra

Note: In view of our policy of continuously improving our products, we reserve the rights to alter specifications or designs without prior notice and without liability. Illustrations do not show the vehicle in its standard form. 25 lakhs worth accidental insurance available. *Current Bolero BS4 mileage: 15.69 kmpl & Bolero Power+ BS4 mileage: 16.5 kmpl ARAI certified. *3 years/ 1 lakh kms, whichever is earlier. For more details, contact your nearest dealer.



Dealer's stamp



Specification	Description	LX	SLE	SLX	ZLX
Engine	Type		mHAWK ⁰⁷⁰ 1493cm ³		
	Maximum Power		52.5 kW (70BHP) @ 3600 r/m		
	Maximum Torque		195 Nm @ 1400 - 2200 r/m		
	Clutch		Single Plate Dry		
Steering	Type		Power Assist		
Suspension	Front		IFS Coil Spring		
	Rear		Rigid Leaf Spring		
	Front		Disc		
	Rear		Drum		
Dimensions	L X W X H in mm		3995 x 1745 x 1880		
	Wheel Base in mm		2680		
	Min Ground Clearance in mm	180	180	180	180

Features	Description	LX	SLE	SLX	ZLX
Safety	Anti-lock Braking System (ABS)	✓	✓	✓	✓
	Driver Airbag	✓	✓	✓	✓
	Reverse Parking sensors	✓	✓	✓	✓
	Overspeed Alert	✓	✓	✓	✓
	Seat Belt Reminder	✓	✓	✓	✓
	Co-driver Occupant Detection System	x	✓	✓	✓
Technology	Engine immobiliser	✓	✓	✓	✓
	Digital Cluster	✓	✓	✓	✓
	Music System	x	x	✓	✓
	Microhybrid system	x	x	x	✓
	Driver Information System				
	-Distance Travelled				
	-Distance To Empty	x	x	x	✓
	-AFE				
	-Gear Indicator				
	-Door Ajar Indicator				
Digital Date and Time Clock	x	x	x	✓	
Style	ORVM	Black	Black	Body Coloured	Body Coloured
	Wheel Caps	✓	✓	✓	✓
	Decals	x	x	x	✓
	Spare Wheel Cover	✓	✓	✓	✓
	Wood Finish with center Bezel	x	x	✓	✓
	Grill with Chrome Plated Finish Strip	✓	✓	✓	✓
	Side Cladding	✓	✓	✓	✓
Comfort	AC	x	✓	✓	✓
	Heater	✓	✓	✓	✓
	Demister	✓	✓	✓	✓
	Comfortable 7 seats	✓	✓	✓	✓
Convenience	Seating (Fabric + Vinyl)	✓	✓	✓	✓
	Power Windows	x	x	✓	✓
	Central Locking	x	x	✓	✓
	Front Map Pockets & Utility Spaces	x	x	✓	✓
	Keyless Entry	x	x	✓	✓
	Remote fuel Lid opener	✓	✓	✓	✓
	Rear Wash and Wiper	x	x	x	✓
12 V Charging Point	x	x	✓	✓	
Warranty		3 years/1 Lakh kms Warranty, Whichever is Earlier			

**Contact your nearest dealer for more details.

Mahindra
Rise.

mahindrabolero.com

THE ULTIMATE SYMBOL OF TOUGHNESS, RELIABILITY AND SAFETY.

NOW WITH ANTI-LOCK BRAKING SYSTEM (ABS) AND AIRBAG



NEW
BOLERO
POWER+

NEW
BOLERO
POWER+

THE NEW BOLERO POWER+ MORE POWER. MORE MILEAGE. MORE PEPPY.

- Reliable mHAWK^{D70} 1493cm³ engine delivers 52.5kW (70 BHP)
- 16.5 kmpl mileage*
- Microhybrid technology
- Power Steering



3 YEARS
1 LAKH KMS
WARRANTY

PEACE OF MIND ASSURED

DRIVE AHEAD WITH A HIGHER WARRANTY.

The New Bolero Power+ gives you peace of mind with a higher warranty. #



RUGGED SUV BUILD FEELS SOLID, LOOKS STYLISH.

The New Bolero Power+ comes with bold styling, a sturdy build and has a dominating on-road presence.



MORE POWER STAY AHEAD ON THE ROAD.

The New Bolero Power+ comes with the reliable mHawk^{D70} engine that gives you ample power to experience a peppier drive without compromising on mileage. It's like getting the best of both worlds.

7 SEATER WITH BETTER CUSHIONING MAKES EVERY JOURNEY COMFORTABLE.

The new Bolero Power+ comes with new seats and better cushioning that supports your body contours. Which means you never feel tired.



BETTER SAFETY PEACE OF MIND ASSURED ON EVERY DRIVE.

- Airbag now available
- Speed alert system in case of overspeeding at 80 or 120 kmph
- Driver + co-driver seat belt reminder
- Manual override for central locking system
- Vehicle reverse parking alert sensors