

# The New Jetta

Volkswagen Group Sales India Private Limited  
Produced in India  
Subject to change without notice  
Issue: February 2015  
Internet: [www.volkswagen.co.in](http://www.volkswagen.co.in)

Your Volkswagen Dealer



Volkswagen. Das Auto.

# The New Jetta







## Contents

---

- 05 About
- 07 Styling
- 10 Dashboard
- 13 Interior
- 16 Engine and Transmission
- 17 Safety
- 18 Upholstery and Colours
- 19 Technical Specifications
- 20 Features
- 22 Volkswagen Service





## A drive less ordinary.

Refinement is the art of doing a lot and yet looking effortless. Of quietly, yet surely, asserting your presence. Of setting a few standards and outpacing many others. Of acquainting with your rare few counterparts and, eventually, driving one: the New Jetta.

Drawing from the impeccable standards set by its predecessor, the New Jetta goes a notch further. While its bold design additions and sharp contours leave you mesmerised, its powerful engine and re-crafted interiors complete the enchantment. In short, it's worth everything.







## Love before first sight.

One of the many pleasant aspects of the New Jetta are its surprises. Like the body coloured, electrically adjustable rear-view mirrors<sup>1</sup> with turn indicators. Or the Bi-Xenon headlamps<sup>2</sup> with LED daytime running lights, which, in conjunction with the new fog lamps<sup>3</sup>, make a sharp statement lighting up the road ahead.

The unified new chrome grille and headlamps give the front a more definitive stance, while the front bumper adds to the car's aerodynamic efficiency. The bold and stylish alloy wheels effortlessly strike the balance between elegance and sportiness. And the back, with its all-new bumper<sup>4</sup> and new tail-lamps, accentuates the car's refined character.







**All eyes on you.**



# Take the helm.

If the New Jetta dazzles on the outside, it truly delights within. The sleek new dashboard packs in everything that meets your needs. The state-of-the-art entertainment system and driving controls ensure you unwind and stay comfortable in style. The cruise control ensures the comfort of your passengers by keeping your speed constant. All this, encased in a sleek elegant finish, whet your appetite for a stylish, refined and stress-free driving experience. But that's not even half of what awaits you inside.







# You don't just step in. You step up.

One look at the interiors, and you'll see that the New Jetta is just as beautiful to see as it is to drive. Take the premium finish and premium leatherette upholstery on the 12-way adjustable driver's seat<sup>5</sup>, for instance. Or the sporty flat bottom steering wheel with controls<sup>2</sup>, which promises to turn ordinary drives into power and entertainment-packed adventures. Or the dashboard<sup>1</sup>, with the twin tube instrument cluster<sup>3</sup> and all-new multi-function console<sup>4</sup>. The New Jetta in sum, gives you many instances to play God.







## You've earned your space.

The New Jetta is big on everything – features, performance and most importantly, space. With storage available in the massive 510-litre boot<sup>4</sup>, well-positioned storage box, foldable rear seats (either completely or in a 60:40 ratio), cup holders and even inside the front arm rest<sup>3</sup>, you'll never fall short of storage for your luggage. There's even a sunglass compartment<sup>1</sup> for all those long drives. And for essentials that you may need within arm's reach, there's the spacious glove compartment<sup>2</sup>. Who says you can't have the space you ask for?

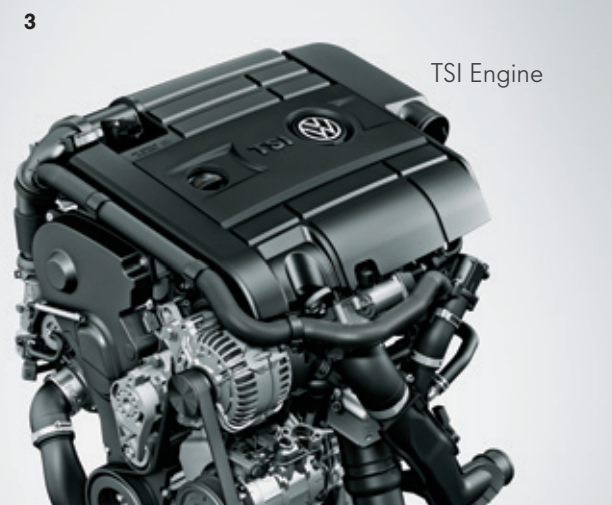






## Power lies beneath.

In line with Volkswagen's revolutionary philosophy of 'maximum power with minimum consumption', the New Jetta comes with powerful, efficient engines in both TDI and TSI technologies. The 1.4-litre TSI<sup>3</sup> petrol engine delivers out a striking 122 PS (90 kW) of power, whereas the 2.0-litre TDI<sup>2</sup> diesel engine pumps it up to 140 PS (103 kW). What's more, the six-speed DSG<sup>1</sup> automatic transmission makes gear-changing super-smooth and extremely fast, while offering even more performance and economy. It's all you need to make a power-packed statement.

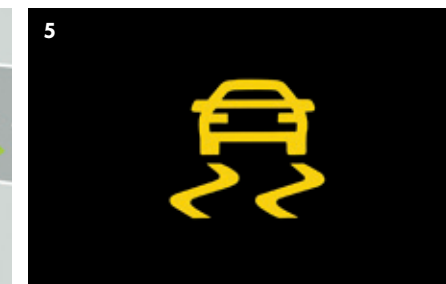


## All-round protection. Standard in every Jetta.

Safety is central to the New Jetta, and state-of-the-art safety at that. A comprehensive six-airbag system<sup>1</sup> offers maximum protection to both driver and passengers.

The Electronic Stabilisation Programme (ESP)<sup>5</sup>, with ABS<sup>2</sup>, Traction Control and Electronic Differential Lock (EDL), provides split-second reactions in a critical driving situation. The parking sensors<sup>4</sup> come useful in the most challenging of places.

Fatigue and driving don't go well together. That's why the fatigue detection feature<sup>3</sup> lets you know when you should take a break. It's things like these that make the New Jetta a safe car like no other.

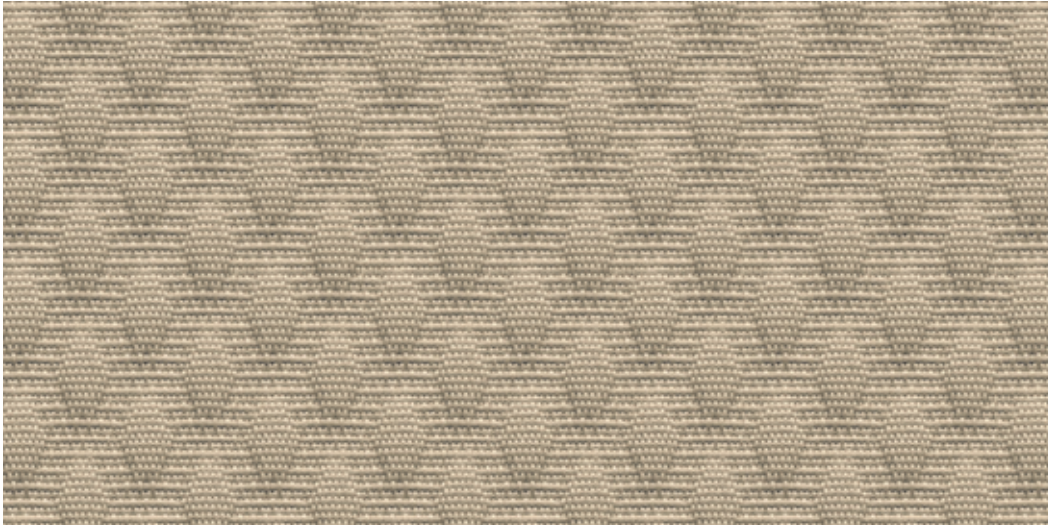




Upholstery:



**Leatherette:**  
07 Cornsilk Beige (NT)



**Fabric:**  
07 Cornsilk Beige (JP)

Colours:



01 Pure White (0Q)



02 Reflex Silver (8E)



03 Toffee Brown (4Q)



04 Platinum Grey (2R)



05 Blue Silk (2B)



06 Deep Black (2T)

Technical Specifications

Versions (Variant)		Jetta Petrol (TL/CL)		Jetta Diesel (TL/CL/HL)	Jetta Diesel (HL)
	Description	Jetta 1.4L TSI		Jetta 2.0L TDI (Manual Transmission)	Jetta 2.0L TDI (Automatic Transmission)
Engine and Transmission	Engine Type	4-cylinder, In-line, Turbocharged, Intercooled Petrol Engine		4-cylinder, In-line CR, Turbocharged Diesel Engine	4-cylinder, In-line CR, Turbocharged Diesel Engine
	Displacement (cc)	1390		1968	1968
	Fuel-efficiency (km/l)*	14.69		19.33	16.96
	Transmission	6-speed (Manual Transmission)		6-speed (Manual Transmission)	6-speed DSG (Automatic Transmission)
Performance	Max. Power [PS (kW) @ rpm]	122 (90) @ 5000		140 (103) @ 4200	140 (103) @ 4200
	Max. Torque [Nm @ rpm]	200 @ 1500-4000		320 @ 1750-2500	320 @ 1750-2500
Steering	Type	Electric, Power-assisted			
	Turning Radius (mtrs)	5.5			
Brakes	Front	Disc			
	Rear	Disc			
Suspension	Front	Coil spring with shock absorbers and suspension stabiliser			
	Rear	Multi-link with suspension stabiliser			
Tyres and Wheels	Wheels	6.5J x 16			
	Tyres	205/55 R16			
Weight	Gross weight (kg)	1850		1940	1970
	Kerb weight (kg)	1354		1401	1439
Exterior Dimensions	Length (mm)	4659			
	Width (mm)	1778			
	Height (mm)	1453			
	Wheelbase (mm)	2648			
	Minimum ground clearance (mm)	159			
Fuel Tank	Fuel tank capacity (ltrs)	55			

\* Test results of Rule 115 of CMVR  
Available in select models      Specifications are subject to change without prior notice      Actual appearance/colour shade may slightly defer



Exterior	Trendline	Comfortline	Highline
Body-coloured door handles and mirrors	•	•	•
Dual exhaust pipes	•	•	•
Turn indicators integrated in exterior mirrors	•	•	•
Shark fin ‘Diversity’ antenna	-	-	•
Space-saving spare wheel (steel)	•	•	•
Rear fog light	•	•	•
Front fog lights with static cornering lights	-	•	-
Bi-Xenon headlamps with dynamic cornering lights	-	-	•
Chrome finish on radiator grill	-	•	•
Chrome finish on front air dam	-	-	•
Decorative chrome strip on side windows	-	-	•
16" ‘Sedona’ alloy wheels (set of 4)	•	•	-
16" ‘Atlanta’ alloy wheels (set of 4)	-	-	•
LED number plate lighting	•	•	•
Daytime running lights	-	•	-
LED daytime running lights	-	-	•
Headlamp washer	-	-	•

Interior	Trendline	Comfortline	Highline
New sporty flat bottom multi-function steering wheel	•	•	•
Leather package (steering wheel, gear shift knob, handbrake grip)	•	•	•
Front centre arm rest with storage box	•	•	•
Rear AC vents	•	•	•
Sunglass holder	•	•	•
60:40 split folding rear seat backrest	•	•	•
Lockable and illuminated glove compartment	•	•	•
Chrome rings on gauges in instrument cluster	•	•	•
Chrome lined AC vents and rotary light switch	-	•	•
Rear centre arm rest with load through provision	-	•	•
Multi-function display	•	•	•
‘Doryc’ fabric seat upholstery	•	-	-
Leatherette upholstery	-	•	•

Safety and Security	Trendline	Comfortline	Highline
Fatigue detection	•	•	•
Disc brakes (front and rear)	•	•	•
Electronic Stability Control (ESC)	•	•	•
Anti-lock Braking System (ABS) with brake assist	•	•	•
Anti-slip Regulation (ASR)	•	•	•
Electronic Differential Lock (EDL)	•	•	•
Hill hold control	•	•	•
Height adjustable front seat belts	•	•	•
Seat belt tensioner (front)	•	•	•
3-point rear centre seat belt	•	•	•
ISOFIX (mounting points for 2 child seats on rear seat bench)	•	•	•
3 rear head restraints	•	•	•
Central locking with 2 remote control folding keys	•	•	•
Electronic engine immobiliser	•	•	•
Engine and transmission guard	•	•	•
Driver and front passenger airbag	•	•	•
Front passenger airbag deactivation	•	•	•
Curtain airbag for front and rear passengers	•	•	•
Side airbags, front	•	•	•
Retro reflectors in all doors	•	•	•
Brake pad wear indicator	•	•	•

Comfort and Convenience	Trendline	Comfortline	Highline
‘Climatronic’ dual-zone air conditioning system	•	•	•
Cooled glove box	•	•	•
Tilt and telescopic adjustment for steering wheel	•	•	•
Windshield in heat insulating glass	•	•	•
Green heat insulating glass in side and rear windows	•	•	•
Illuminated vanity mirrors	•	•	•
Front seats with height adjustment	•	•	•
Rain sensor	-	•	•
Park distance control (front and rear) with acoustic warning	-	•	•
Exterior mirrors, electrically adjustable and heated	•	-	-
Exterior mirrors, electrically adjustable, foldable, heated with surround lighting and kerb view	-	•	•
Aspherical right side exterior mirror	•	•	•
‘RCD 220’ music system with CD player, 4 speakers in front, USB port	•	-	-
‘RCD 320’ music system with CD player, 4 speakers in front, USB/i-POD port and Aux-In	-	•	-
‘RCD 510’ touch screen music system with 6 CD changer, Aux-In and 8 speakers	-	-	•
Bluetooth connectivity for cell phone operation	-	•	•
Mobile device interface MEDIA-IN adaptor cable in glove compartment	-	-	•
Paddle shift for DSG transmission	-	-	•
12-way electrically adjustable driver seat	-	-	•
Lumbar support for driver seat	-	•	-
Electrically adjustable lumbar support for driver	-	-	•
Cruise control	•	•	•
Auto dimming interior mirror	-	•	•
Power windows front and rear	•	•	•
Storage pockets on front seat back	-	•	•
Automatic headlamp activation	-	•	•
Coming home and leaving home function for headlamps	-	•	•
12 V socket at front and rear	•	•	•
Front and rear reading lights	-	•	•



## Volkswagen service for your peace of mind.

**Volkswagen Warranty and Extended Warranty:** The new Volkswagen Jetta comes with a standard warranty of two years, unlimited kilometres, and can be extended at an additional cost for a further one year and up to 80,000 kms, or two years and up to 1,00,000 kms from the date of sale (whichever is earlier). All this, to protect your car against the defects of most mechanical and electrical components due to manufacturing defects. All periodic maintenance at recommended intervals and warranty work must be completed by an authorised Volkswagen dealer.

**3-year Paint Warranty and 12-year Anti-perforation Warranty:** The paintwork of the New Jetta is covered against manufacturing defects for a period up to three years and the vehicle body parts for a period of 12 years from the date of sale against perforation caused by corrosion. Naturally, the New Jetta must be cared for in compliance with the operating instructions, which will be found in your vehicle handbook, and all body repairs must be done at an authorised Volkswagen dealer.

**Volkswagen Roadside Assistance:** Every new car is registered for Volkswagen Roadside Assistance for two years from its date of sale. This provides the vehicle with home and roadside recovery in the unlikely event of a breakdown anywhere in India (subject to terms and conditions). This service can be extended for either one or two additional years at nominal cost.

**Periodic Maintenance:** The service interval of your Volkswagen is scheduled for every 15,000 kms or one year. With a free inspection at 7,500 kms or six months, whichever is earlier.

For more details, please consult your nearest authorised Volkswagen dealer. For further details about warranty, contact a Volkswagen dealer or Volkswagen Roadside Assistance, 24x7, anytime, anywhere.

**Please note:** The features and specifications contained in this brochure are for informational purposes only and are subject to change without prior notice. The print process does not allow for exact reproduction of paint finish and seat upholstery colours. If you require any specific feature, you must consult your authorised Volkswagen dealer, who is regularly updated with any change in specifications. Please check model availability and full specification details with your authorised Volkswagen dealer prior to ordering. We would like to advise you that telephone calls to Volkswagen Customer Care may be monitored and recorded as part of our training and quality assurance processes. Terms and conditions apply.

**Call (toll-free 24x7): 1800 102 0909 / 1800 209 0909**

**Roadside Assistance: 1800 102 0909 / 1800 419 1155**

## Volkswagen Service App

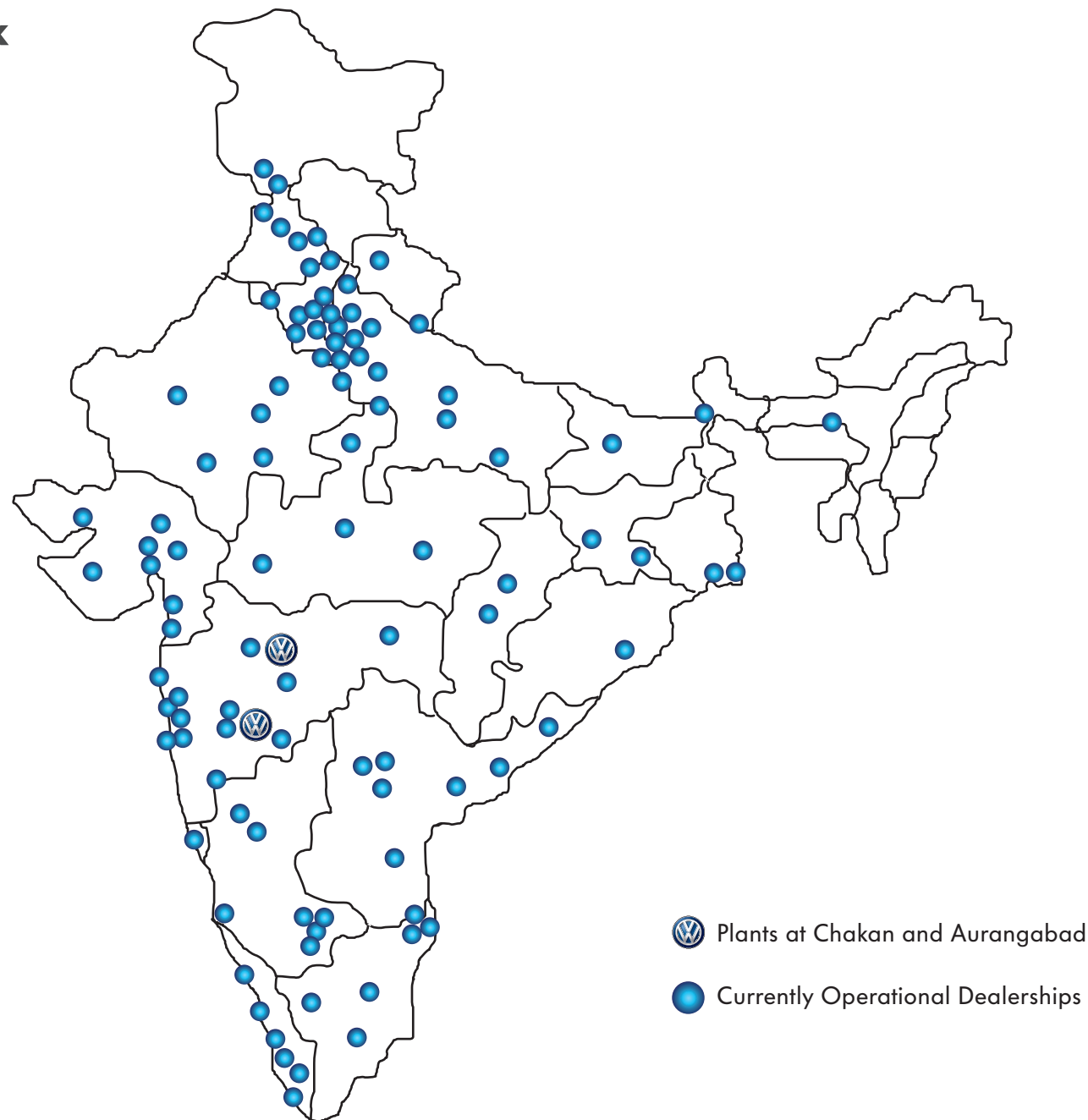
**Everything you need to know about Volkswagen. Now on-the-go.**

The Volkswagen Service Mobile Application is your reliable and smart assistant on the go. You can get information on standard service labour charges, the Volkswagen dealer network and an explanation of various indicators on the car's dashboard. It enables you to get connected with Volkswagen Customer Care and Roadside Assistance at a click of a button. It also facilitates prospective customers to book a test drive and get information on Volkswagen's India line-up of cars and the latest tips and offers. Furthermore, you can create stories of your journey with maps and pictures. So stay connected.



Scan the QR code to download the app.

## Dealer Network



**Disclaimer:** Map drawn not to scale.  
Updated till February, 2015.