

SX4
MEN ARE BACK



Dealer Stamp



MARUTI SUZUKI
Maruti Suzuki India Ltd.,
Plot No. 1, Nelson Mandela Road,
Vasant Kunj, New Delhi - 110 070, India.

MARUTI SUZUKI
Way of Life!

FOR THE MAN IN EVERY GENTLEMAN



NEW
VVT
ENGINE

Style, refinement, polish and etiquette. Just some words that symbolize the perfect gentleman. Always noticed. Never ignored. Forever admired.

A gentleman is known for a taste in the finer things. He has a penchant for luxury and never shies from showing the world what upper class life is all about.

And there is no better way to appeal to his sensibilities than with the all new SX4. Swish leather upholstery, tasteful wood finished arm rests and a host of cutting edge features, all designed to get that proverbial nod from even the most thorough of them.

But a gentleman is more than just that. Indeed, inside each and every one lurks a man. Strong, powerful, confident, and one who knows how to get the job done.

To get that man roaring, the new SX4 is fitted with the very advanced VVT engine. Pumping out pure power, amazing torque and unbelievable acceleration, this engine provides the perfect ingredients to dominate the road with.

So gentlemen, rejoice. And let the man within go wild. The SX4 is here to take you all for the drive of a lifetime.



IMPOSING STANCE

Impressive Exteriors

- Revolutionary European design
- Tall stance and dynamic bodylines for precise and stable handling
- Muscular styling with contoured bonnet and flared wheel arches
- Aesthetically designed wrap around head lamps and tail light cluster
- NEW** • Sporty honeycomb grille
- NEW** • Stylish ten spoke alloys





Remote embedded key for higher security.

PERFECTLY GROOMED

Plush Interiors

- NEW** • Stylish two tone dashboard
- NEW** • Luxurious upholstery*
- Cockpit style control panel lets you be in total control
- Mesmerising amber instrument panel
- NEW** • Wood finish arm rests on door trims
- NEW** • 4 Speed Automatic Transmission#

*Leather option available in ZXi. #In ZXi and ZXi-leather.





Highest ground clearance (190 mm*)



POWERFUL STATEMENT

Unmatched Performance

- NEW** • New VVT Engine for optimal power, torque and efficiency
- DOHC 16 valve engine
- Maximum power 104.68 ps @ 5600 rpm
- World class 'Drive by Wire' technology
- Great fuel efficiency
- Conforms to Bharat Stage IV emission norms



EXCELLENT MILEAGE
15.5 KMPL**
ARAI TESTED

NEW
VVT
ENGINE

Amazing Experience

- Speed sensitive electronic power steering for easy maneuverability
- Widest & biggest tyres in its class for better handling
- Maximum ground clearance in its class to suit rough road conditions

*In ZXi variant only.**SX4 MT.



Tilt Steering



Illuminated Key Ring

GRACIOUS HOST

Loaded with entertaining features

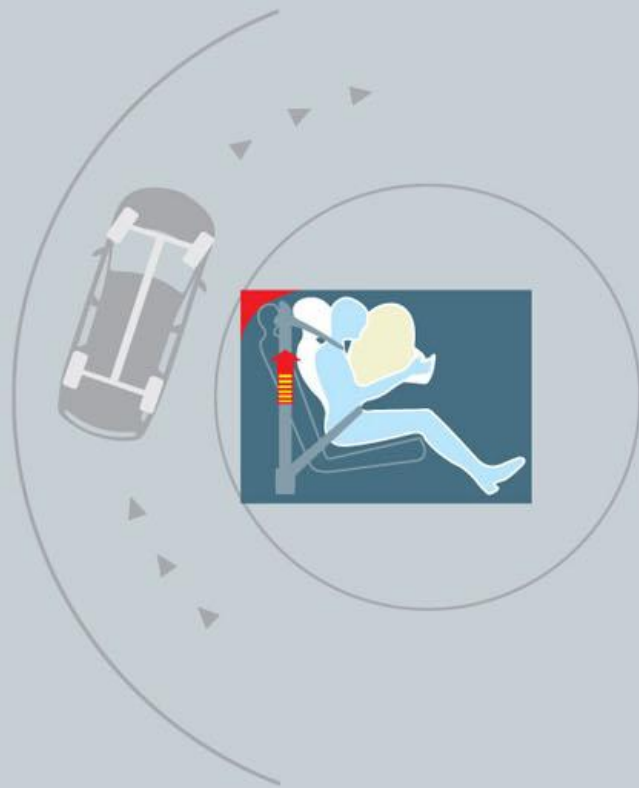
1. Illuminated steering mounted audio controls for ease of use*
2. Fully integrated stereo in dashboard to unleash the music
3. Automatic climate control for intelligent cooling*
- NEW** 4. USB port
5. Electrically adjustable ORVMs
6. Dual info display for temperature & time
7. Variable illumination in instrument cluster for better clarity
8. Glass antenna for clear reception

RELAXED DEMEANOUR

Spacious and comfortable

- a. Large boot space to fit in more
- b. Extra headroom, elbowroom and legroom
- c. The biggest and most spacious in its class
- d. Height adjustable driving seat for a better view*
- e. Improved suspension to ensure better ride comfort
- f. Adjustable rear head-rests
- g. Three cabin lights - driver, co-passenger & rear seat passengers





BRAVE PROTECTOR

Safety Features

- Dual front airbags, seat belt pretensioners and load limiters for total protection*
- Anti-lock Braking System (ABS) with Electronic Brake-force Distribution (EBD) for total control*
- Wedge in A pillar for better visibility

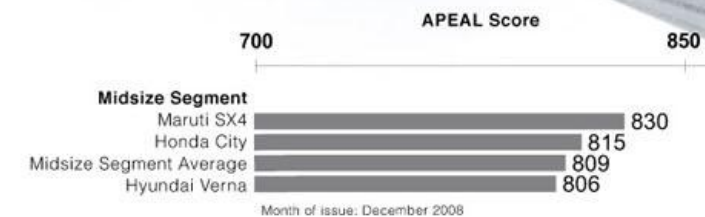
*Available in ZXI variant only.

DOMINATING PERSONALITY

J.D. Power Asia Pacific 2008 India Automotive Performance Execution & Layout Study (APEAL)

The APEAL study provides an analysis of what excites and delights owners about their new vehicle's performance and design during the initial two to six months of the ownership. The study examines nearly 100 attributes covering 10 vehicle factors that include vehicle interior, exterior, driving safety, fuel economy, etc.

The SX4 has been awarded the 'Most Appealing Midsize Car' by J.D. Power Asia Pacific APEAL study for two consecutive years and has been ranked highest in the segment.



Most Appealing Midsize Car
Two Years in a Row

SPECIFICATIONS

Engine		All variants
Type		16V DOHC, VVT
Cylinders		4
No. of valves		16
Piston displacement		1586 cc
Bore x Stroke		78 mm x 83 mm
Maximum output		104.68 ps @ 5600 rpm
Maximum torque		145 Nm @ 4100 rpm
Weight		All variants
Kerb weight		MT - 1170 kg (VXi), 1200 kg (ZXi) AT - 1210 kg (ZXi)
Transmission		All variants
Manual		5 MT
Automatic		4 Speed AT (ZXi, ZXi-leather)
Dimensions		All variants
Overall length		4490 mm
Overall width		1735 mm
Overall height		1560 mm (VXi), 1570 mm (ZXi)
Wheelbase		2500 mm
Front Track		1500 mm
Rear Track		1495 mm
Ground Clearance		180 mm (VXi), 190 mm (ZXi)
Turning Radius		5.3 m
Chassis		All variants
Steering		EPS
Brakes	Front	Ventilated Disc
	Rear	Drum
Suspension	Front	Independent suspension with gas filled McPherson strut & anti-roll bar
	Rear	Semi independent torsion beam with gas filled shock absorbers
Wheels and Tyres		All variants
Wheel type		Steel wheels (VXi), Alloy wheels (ZXi)
Wheel size		15" (VXi), 16" (ZXi)
Tyre type		Tubeless
Tyre size		195/65 R15 (VXi), 205/60 R16 (ZXi)
Capacity		All variants
Seating		5
Fuel Tank		50 litres

FEATURES

Comfort	VXi	ZXi	Instrument Panel	VXi	ZXi
Air Conditioner (manual)	✓	-	Stereo remote	✓	✓
Auto air conditioner (single zone)	-	✓	CD/MP3/WMA, AM/FM Tuner	✓	✓
Heater	✓	✓	4 speakers (2 front & 2 rear)	✓	✓
Front door pockets (both sides)	✓	✓	2 Tweeters (in front door trims)	✓	✓
Front seat back pockets (both sides)	✓	✓	USB Port	✓	✓
Centre room lamp	✓	✓	Audio controls on steering wheel with illumination	-	✓
Map light (twin)	✓	✓	Audible headlight-on reminder	✓	✓
Trunk room light	✓	✓	Key-off reminder	✓	✓
Remote operated fuel tank lid	✓	✓	Door-ajar warning lamp	✓	✓
Remote operated trunk lid	✓	✓	Seat belt reminder (driver)	✓	✓
Power steering (EPS)	✓	✓	Centre console with cupholder (Fr:2, Rr:1)	✓	✓
Adjustable steering column tilt	✓	✓	PET bottle holder (door trim)	Front&Rear	Front&Rear
Leather steering wheel*	-	-	Ashtray & Cigarette lighter	✓	✓
Power windows (front)	✓	✓	Key cylinder with illumination ring	✓	✓
Power windows (rear)	✓	✓	Gear shift boot ring	Unpainted	Silver painted
Driver's seat height adjuster	-	✓	Exterior		
Material of front & rear seats*	Fabric	Fabric	Tubeless tyres	✓	✓
Rear seat centre arm rest	✓	✓	Alloy wheels	-	✓
Fixed rear seat	✓	✓	Full wheel cover	✓	-
Adjustable head rests (front & rear)	✓	✓	Body coloured bumpers	✓	✓
Rear defogger	✓	✓	Body coloured side moulding	-	✓
Central locking	✓	✓	Body coloured outside door handles	✓	✓
Keyless entry	✓	✓	High mount stop lamp	✓	✓
Interior			Front fog lamps	-	✓
Day/night rear view mirror	✓	✓	Rear fog lamps	✓	✓
Passenger vanity mirror	✓	✓	Outside rear view mirror (R)	✓	✓
Driver's ticket holder	✓	✓	Outside rear view mirror (L)	✓	✓
Three assist grips	✓	✓	Electrically adjustable outside rear view mirrors (R/L)	✓	✓
Interior light turn-on when central locking switch on	✓	✓	Body coloured outside rear view mirrors	✓	✓
Accent front & rear door trims*	Fabric	Fabric	Glass antenna	✓	✓
Front door trim pockets	✓	✓	Front & rear mudflap	s (black)	s (body colour)
Inside door handle and door lock (silver painted)	-	✓	Safety & Security		
Instrument Panel			Driver's airbag	-	✓
Tachometer	✓	✓	Passenger airbag	-	✓
Speedometer with illumination control	✓	✓	3 point ELR front seat belt pretensioners & force limiter	-	✓
Speedometer illumination colour	White	White	3 point rear seat belts (2) and 2 point lap belt (1)	✓	✓
Switch illumination colour	Amber	Amber	Child-lock rear door	✓	✓
Information display (temp., clock)	✓	✓	Height adjustable front seat belts	✓	✓
Headlight levelling	✓	✓	Side impact protection beam	✓	✓
Integrated stereo	✓	✓	iCATS	✓	✓
			Door lock canceller (front only)	✓	✓
			ABS / EBD	-	✓

All variants available in Bharat Stage IV version.



Azure Grey



Pearl Arctic White



New Oyster Blue



Midnight Black



Clear Beige



Silky Silver



New French Eclair

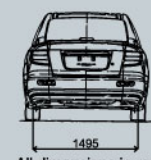
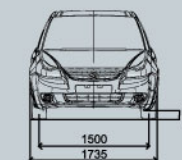
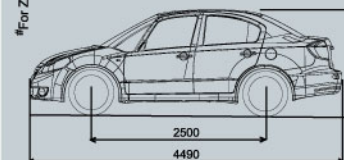
Colours shown may vary from actual body colours due to printing on paper. All colours available in metallic shades.

*Leather option in ZXi variant.



Maruti Suzuki India Limited reserves the right to change without prior notice prices, colours, equipment specifications and models and also to discontinue models. Accessories shown in the pictures may not be part of standard equipment. For variant specific features refer to equipment list.

#For ZXi variant only



All dimensions in mm*

726 sales points, 2794 service centres, 1332 cities covered by service network as on 1st September, 2009.