

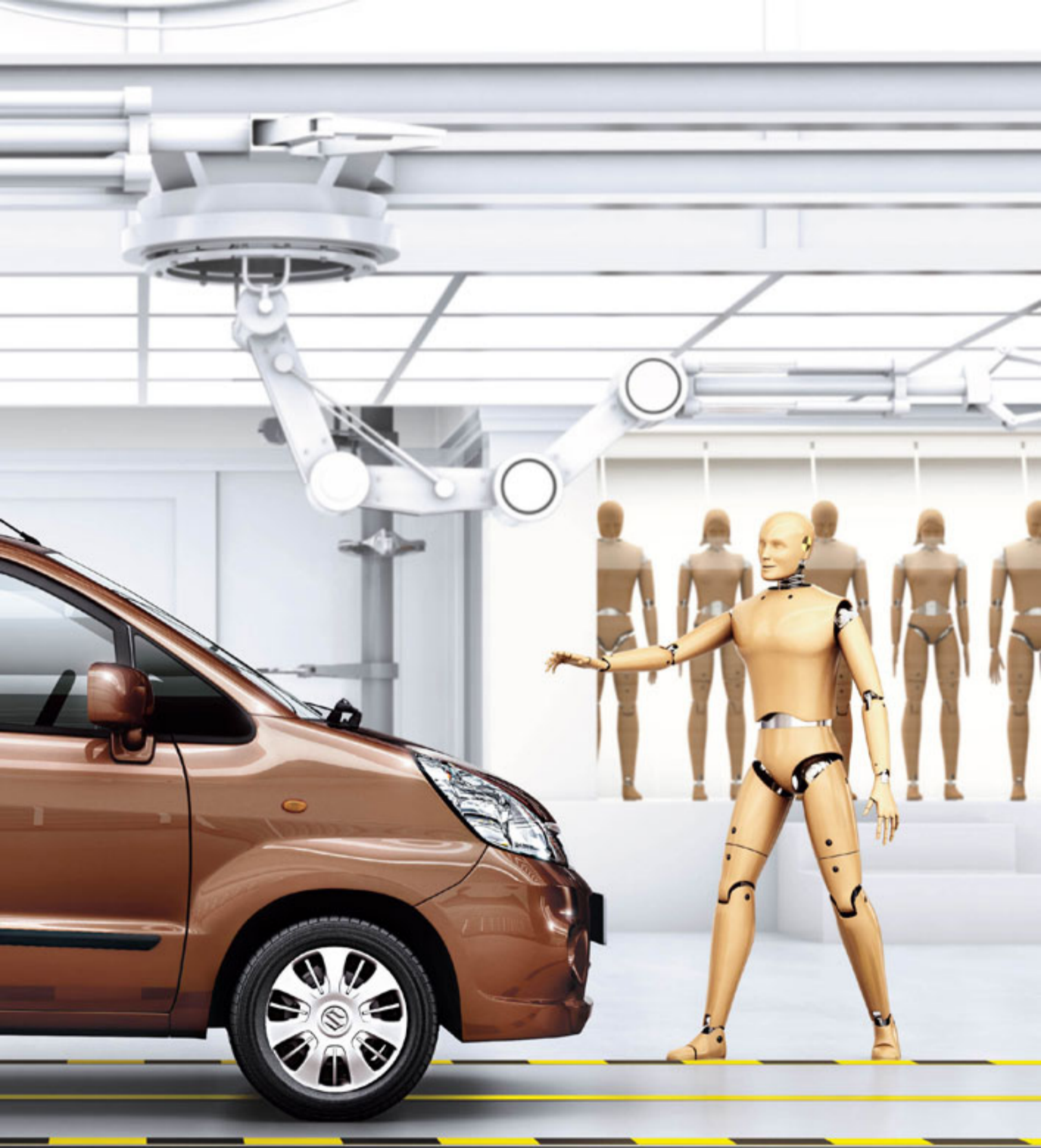
**ESTILO**  
Take a fresh view of life

*COME* **Alive**



**MARUTI SUZUKI**  
Way of Life!





## Come alive to a new driving experience.

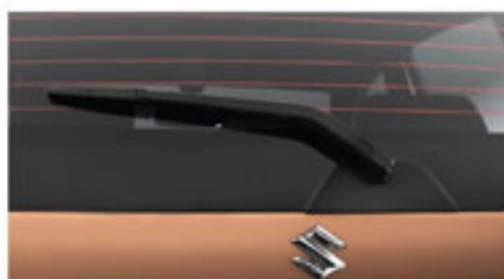
There are always some experiences in life that make you come alive. In an Estilo, that feeling is something you will experience every time you sit behind the wheel. Be it your daily drive to work, weekend trip or those special drives to destinations unknown, the Estilo is designed to give you an enlivening experience each time. Go ahead, experience the drive that makes you come alive.



Dynamic Head Lamps that add class to the bold styling.



Sculpted Fog Lamps to add finesse to the front.



Rear Wiper Washer to ensure you get a clean rear view.



## Come alive with stunning looks.

With bold new styling, aerodynamic contours and smooth curves, the all new Estilo is a perfect combination of sturdiness and class. The rich chrome front grill, creased hood, dynamically designed head lamps and sculpted fog lamps reflect your taste for finesse and style. Go ahead, let your style quotient come alive!

■ Body Coloured door handles & ORVM

■ Stylish Wheel Caps

■ Body Side Moulding



Enjoy more room and storage space with foldable Rear Seats.



Illuminated Instrument Cluster with Silver Lining that adds to the elegance.



Four Power Windows to let you enjoy the view and the wind at the push of a button.



Rear Parcel Tray that gives you more convenience and easy storage.



Newly designed electronically adjustable ORVMs.



## Come alive with elegant interiors.

The elegant interiors of the Estilo are a fine blend of comfort and sophistication. Just the way you like it. Dual-tone dashboard (Chocolate brown and Beige colour), ergonomically designed seats, roomy interiors with ample leg room and a rear luggage shelf, make it chic and spacious. Get inside and let your senses come alive.

- Colour coordinated Seat Fabric
- AC vents with Chrome Finish Rings
- Adjustable Headrests
- Remote Fuel Lid Opener



Cable Type Gear Shift Mechanism with Detent Pin Technology (DPT) for smooth and precise gear shifting experience.

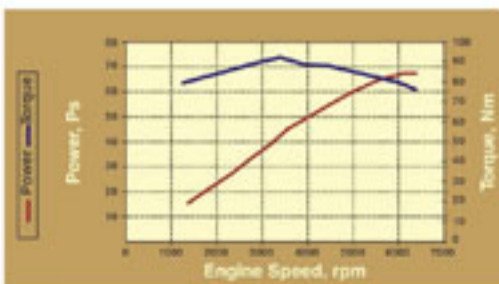


Electronic Power Assisted Steering that gives better handling, more mileage and is low on maintenance.



Minimum turning radius **4.6m**

Low Turning Radius to give you better maneuverability in those crowded city streets.



Now experience incredible power and amazing mileage as the K Series Engine powers your drives like never before.

**19<sup>#</sup>**  
**km/litre**

\*Test results of rule 115 of CMVR





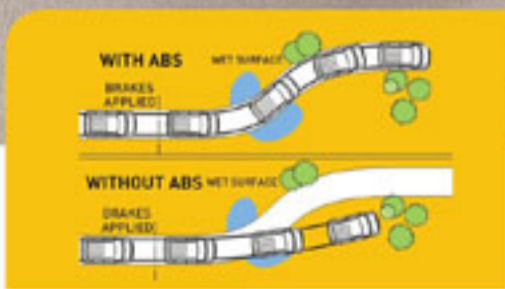
**K** SERIES  
ENGINES

- Advanced all aluminum light weight engine
- Incredible power of 68 PS @ 6200 rpm
- Torque of 90 Nm @ 3500 rpm
- Low on maintenance

## Come alive to the thrill of driving.

With a powerful all aluminum K Series Engine, the Estilo always keeps you ahead. The pleasure of stress-free driving is all yours with Detent Pin Transmission Technology that offers smooth, effortless gear shifting. Take the Estilo for an exhilarating spin and let the thrill seeker in you come alive!

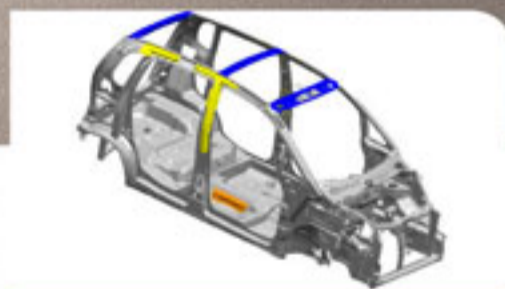
■ BS Compliant ■ High Power to Weight Ratio for Better Pickup ■ Amazing Fuel Efficiency



ABS\* Technology that gives you better control and offers superior handling.



Airbags\* to add more safety to your drives.



TESS - Total Effective Strength Structure to further enhance the occupants' safety.

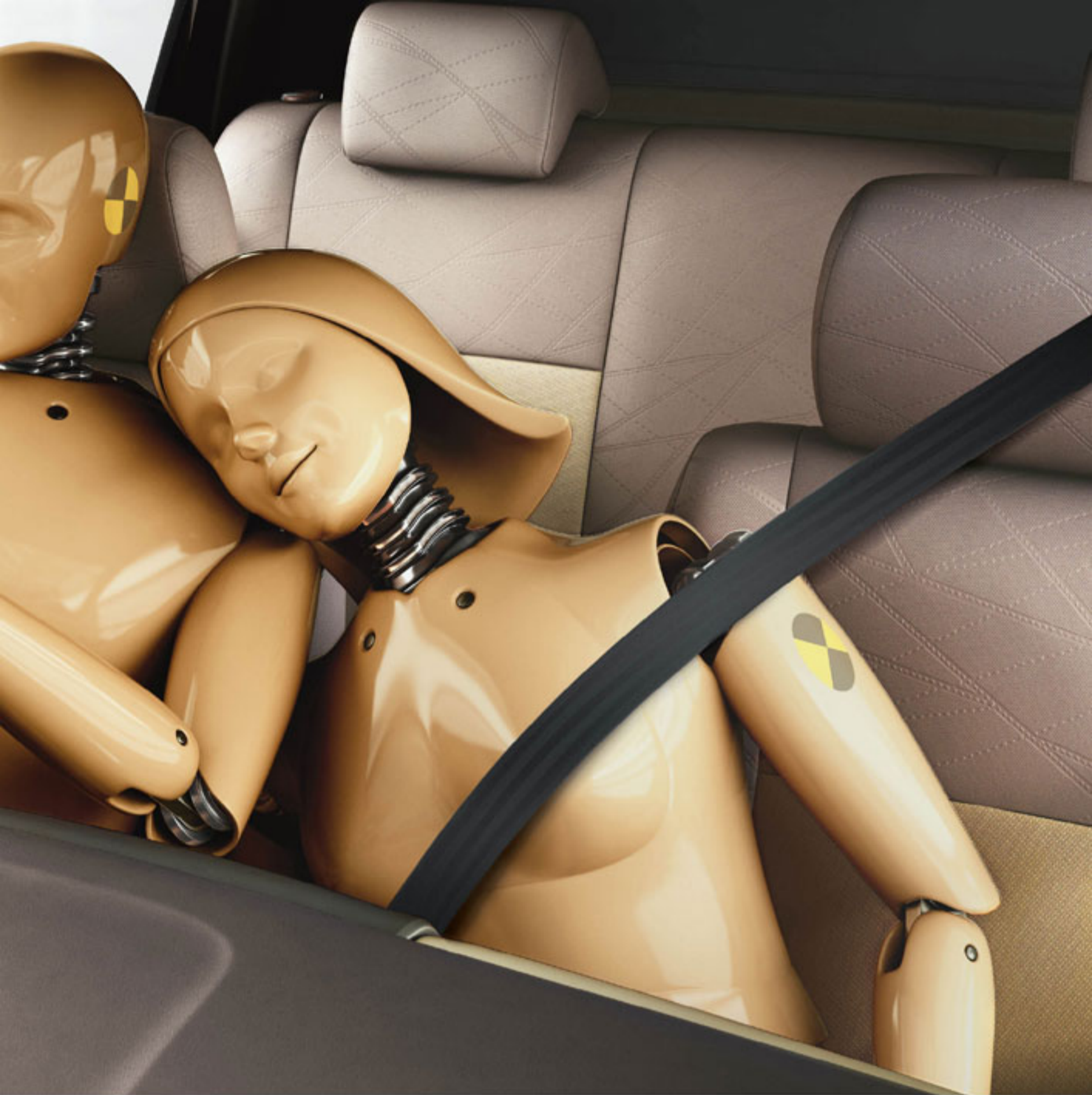


Integrated Key with Central Locking to give you a fresh level of security.



Anti-Theft Security Alarm to keep your car secure wherever you go.

\* Optional in Vxi



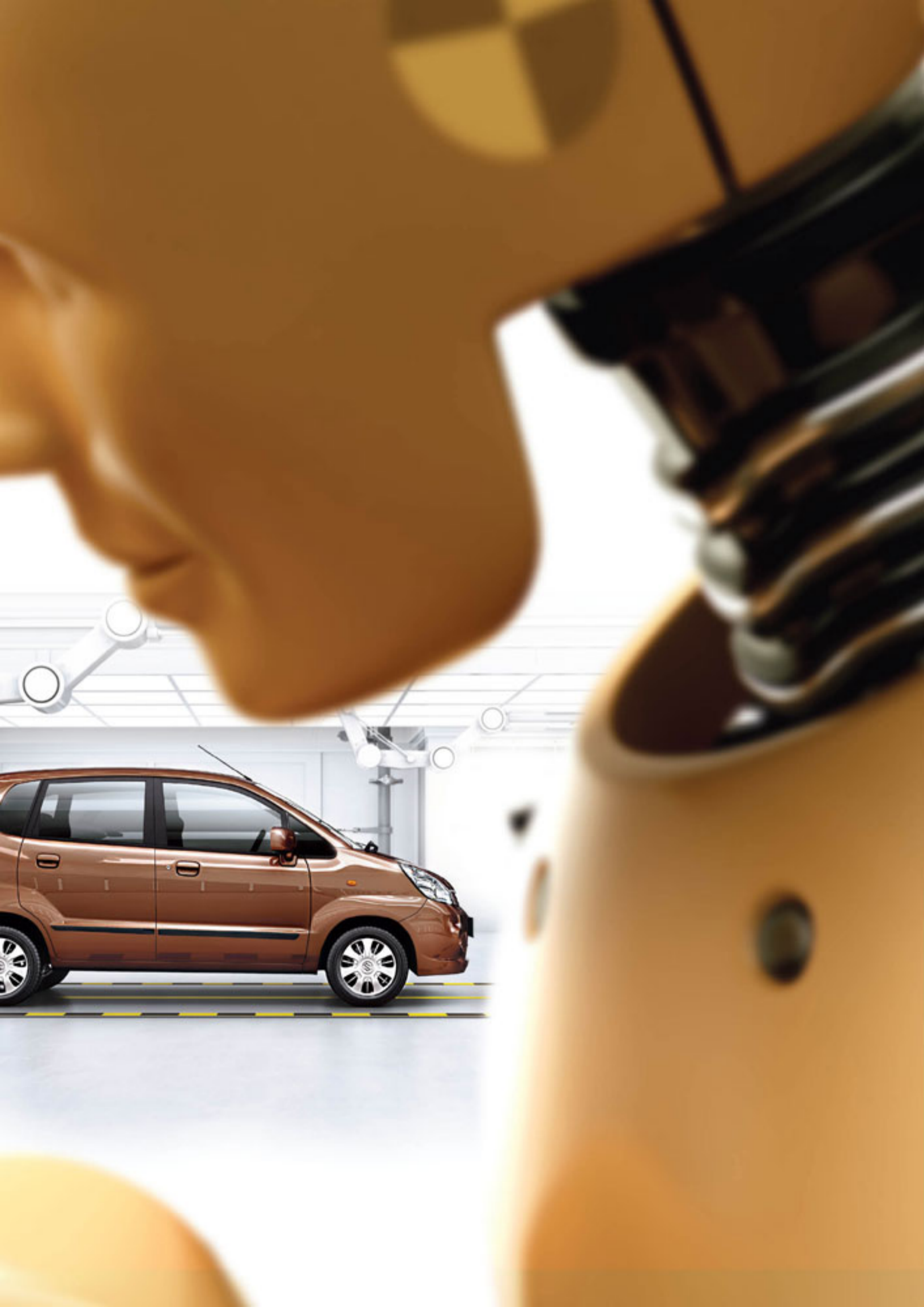
## Come alive to a safer drive.

With a set of advanced safety features, the all new Estilo is designed to let you enjoy your drive without a worry. Equipped with ABS, Airbags, TESS and much more, it ensures that you and your loved ones are safe and secure. Now a new level of safety lets you come alive.

## Come alive.

It is time to take a break from your day to day routine. It is time to leave behind the mundane and go by what your heart desires. It is time to do things your way. It is time to come alive.

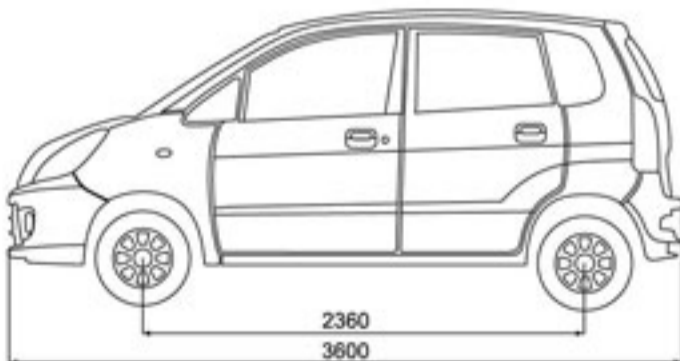
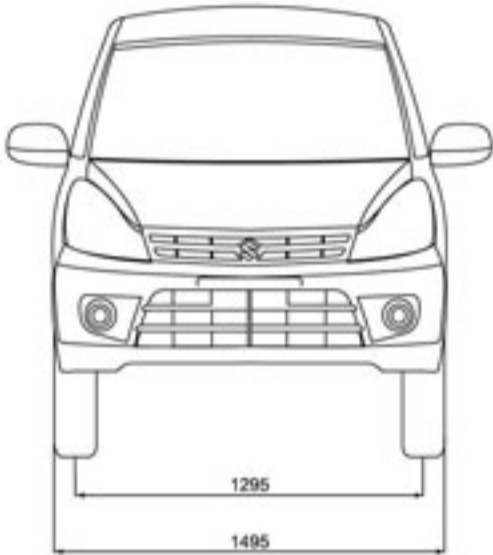
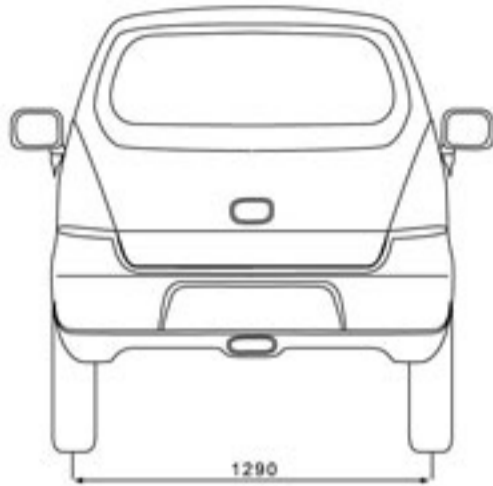






#### Estilo Specification and Feature List

SPECIFICATION IN MM	
Length	3600
Width	1475 (LX/LXi), 1495 (VXi)
Height	1595
Wheel Base	2360
Tread, Front	1295
Tread, Rear	1290
Turning Radius	4.6 m
Seating capacity	5
Ground clearance	165 mm
Max power (PS / rpm)	68 PS @ 6200 rpm
Max. Torque (Nm / rpm)	90 Nm @ 3500 rpm
Engine	K10B
Engine capacity	998 cc
Engine Type	3 cyl
Transmission	5 MT
Drive	2 WD
Clutch Type	Dry, single disc, diaphragm type
Kerb Weight (kg)	845 (LX, LXi), 865 (VXi)
GVW (kg)	1275
Tyre Size (Tubeless)	145 / 70 R13 (LX, LXi), 155/65 R13 (VXi)
Fuel tank capacity (l)	35
Front Brake	Ventilated Disc
Rear Brake	Drum
Transmission Type	Manual 5 speed
Suspension Type	Fr: McPherson strut with Torsion type roll control device Rr: Coil spring, Gas filled shock absorbers with three link rigid and isolated trailing arm
Power steering	Electronic Power steering (EPS) (Lxi & Vxi)



FEATURES			
	LX	LXi	VXi
<b>SAFETY &amp; SECURITY</b>			
1 SRS Airbag (Driver Side)**			✓
2 ABS**			✓
3 Side Door Beams	✓	✓	✓
4 High Mount Stop Lamp	✓	✓	✓
5 Child Lock (Rear Door)	✓	✓	✓
6 Front Wiper (2 speed + intermittent)	✓	✓	✓
7 Back Door Defogger			✓
8 Front Fog Lamps			✓
9 Rear Fog Lamps			✓
10 Rear Window Wiper & Washer			✓
11 iCATS	✓	✓	✓
12 Steering Lock	✓	✓	✓
13 Security System			✓
<b>EXTERIOR</b>			
1 Body Colored Bumper		✓	✓
2 Body-Side Molding			✓
3 Wheel Cap	CTR	CTR	FULL
4 Black Out Film			✓
5 Body Colored Outside Door Mirrors			✓
6 Body Colored Outside Door Handle		(Back Door Only)	✓
7 Antenna	✓	✓	✓
<b>INTERIOR</b>			
1 Front Seat Adjustable Head Restraint	✓	✓	✓
2 Rear Seat Adjustable Head Restraints	✓	✓	✓
3 Front Seat Back Pocket (Driver's Seat)	✓	✓	✓
4 Rear Seat	Bench	Bench	Bench
5 Floor Carpet	✓	✓	✓
6 Cup Holders	Fr 2+Rr 1	Fr 2+Rr 1	Fr 2+Rr 1
7 Rear Luggage Shelf			✓
8 Seat Fabric	New Standard Fabric	New Standard Fabric	New Luxury Fabric
<b>IP/ CONSOLE</b>			
1 Centre Console with cup holder	✓	✓	✓
2 IP Pocket	✓	✓	✓
3 Tachometer			✓
4 Lights - off & Key Reminder Chime			✓
5 Accessory Socket			✓
6 Ashtray	✓	✓	✓
7 Fuel level indicator- Digital Display	✓	✓	✓
8 Steering Wheel	(3 SP)	(3 SP)	(3 SP)
<b>COMFORT &amp; CONVENIENCE</b>			
1 Power Windows		FR	FR/RR
2 Power Steering		✓	✓
3 Front Door Pocket	✓	✓	✓
4 Remote Keyless Entry System (Integrated with key)			✓
5 ORVM (R/L)	Paddle type	Paddle type	Internally adjustable electrical type
6 AC	✓	✓	✓
7 Backdoor Opener	Key	Power Lock + Key	Power Lock + Key
8 Remote Fuel Lid Opener	✓	✓	✓
9 Sun Visor with Ticket Holder	✓	✓	✓
10 Vanity Mirror (Sun Visor)			(Co-driver)
11 Grip Assistant (3 nos.)	✓	✓	✓
12 Co-driver side front door lock	✓	✓	✓
13 Speaker provision	✓	✓	✓
14 Central Door Locks		✓	✓

\*\*Optional in VXi

[www.marutisuzukiestilo.com](http://www.marutisuzukiestilo.com)

Dealer stamp



