



Turn the World on your finger

**SANTRO**  
*zipDrive*

  
HYUNDAI



# SANTRO

zipDrive

Turn the World on your finger.

Bringing in the all new soul-stirring Zip with the new fascinatingly sporty look.

Blending it all with your Complete Family car. Power-steering for effortless cruising and nimble maneuvering. Racy, sporty looks.

State-of-the-art Hyundai Epsilon Engine. International Tall-Boy design. All new value-package. Step in to turn the World on your finger.



*The Hyundai Santro is powered by the new hi-tech Hyundai Epsilon engine.*

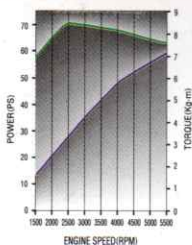
*Employing advanced cylinder head design with dual inlet valves, tumble ports and pentroof combustion chamber, this engine produces incredible pulling power at much lower rpm compared to any car in its category. With its unique engine management computer continuously sensing what's happening inside the engine, to constantly monitor the engine performance and make it amazingly responsive to your touch and feel. Remember the Genius is inside. So relax and enjoy the thrill of the unparalleled drive in the all-new Hyundai Santro.*

**The Cutting-edge  
Technology.  
The Terrain-blurring  
Power.**

**12V SOHC**

55ps @ 5500rpm  
8.4kgm of torque @ 2500rpm

**Multi-point Fuel Injection System with Multi Valves**



Indian road conditions are about as tough as you can get. But once you're behind the Santro's wheel, the only road you are aware of is the one to ecstasy. The amazingly high powered sports car performance of the Hyundai Santro comes from its 12V SOHC Epsilon engine and its impressive power-to-weight ratio. Its in-line 4 cylinder, 999cc engine is fired by an electronic ignition system, developing 55ps @ 5500rpm and 8.4kgm of torque @ 2500rpm. The multi-point fuel injection system along with dual-intake valves meters the exact amount of fuel that your engine needs. Giving you the level of fuel economy you could never imagine before. No wonder Santro also well exceeds all Euro-II norms.



**E-Epsilon Superior Engine**



## The Hyundai Santro So comfortable inside you'd never want to step out.

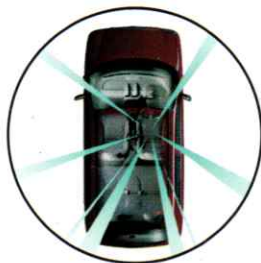
*The incredibly roomy interior of the Tall-Boy Hyundai Santro is designed to maximise personal space. So you never feel cramped.*

*The ergonomically designed seats with fabric upholstery and head-rests will cradle you with its comfortable feel. The ample leg, head and elbow room allows you to stretch even while sitting - a rare luxury for a car its size.*



### An Easy step into comfort

SANTRO's unique tall boy design allows easy entry and easy exit without crouching.



### Visibility

Park yourself in the driver's seat and the first thing you notice is the amazing all round visibility. The wide glass area, the high and erect driving position, the sloping A-pillars, combine to give you a terrific view ahead without any blind spots.

### Air-Ventilation System

The Santro is truly a small car packed with a lot of smart ideas. Comfort as a detail is to its depth when it comes to driving the Santro.

Same is the reason why the Air Conditioning and the ventilation system inside the car is so designed to give all round comfort to the driver and passengers.

The ventilation ducts inside the car produces a circulatory effect providing total body comfort and absolute relaxed driving feeling, keeping you shielded from dust and uncomfortable weather conditions.



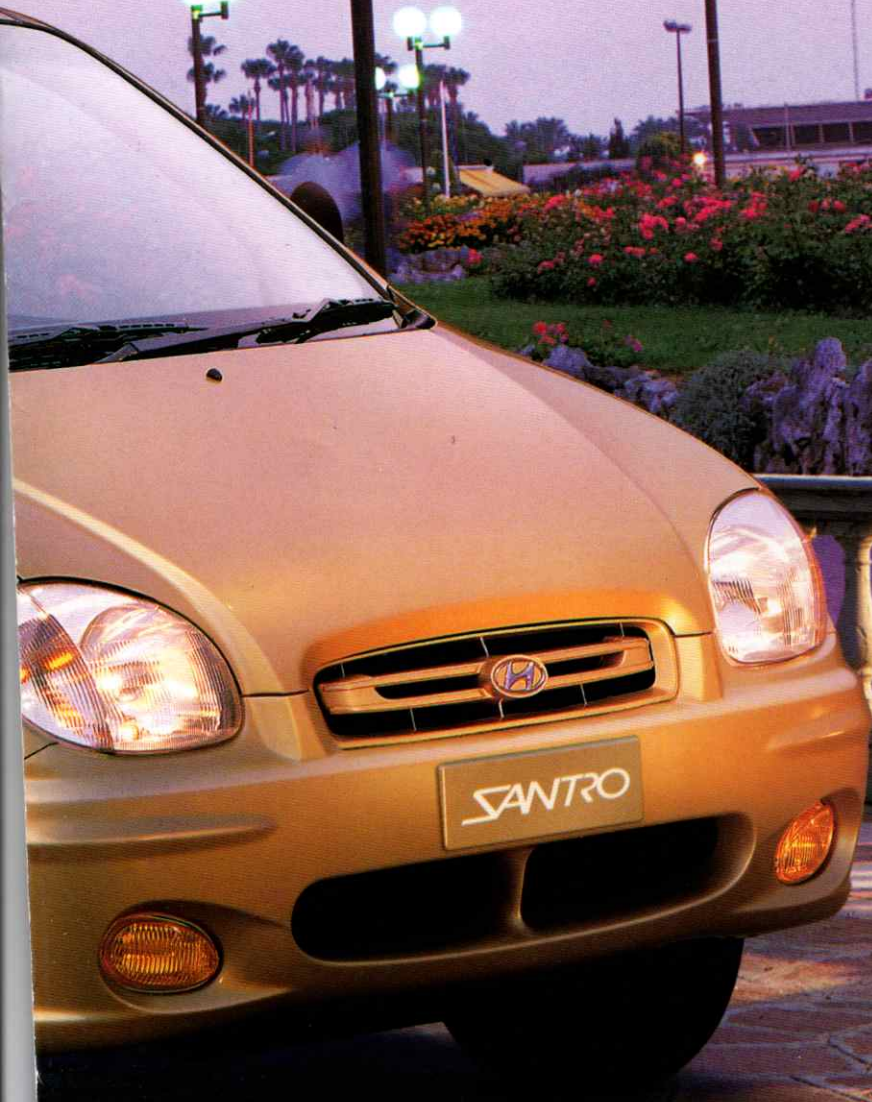
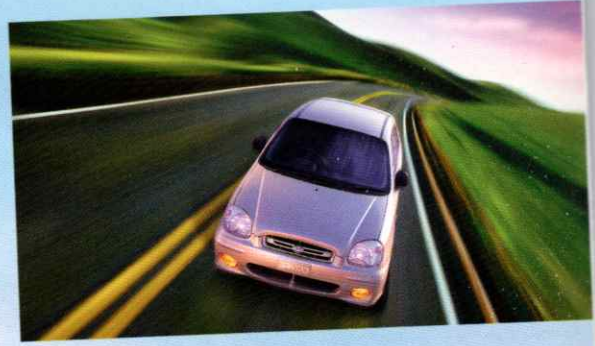






## Hyundai Zip Drive

The all-new Hyundai Santro is a stunning example of modern automobile design. The new Horizontal Front Grille and the new Rear Spoiler. To give you the Stylish. Sporty. Incredibly attractive look. Sit back. Nudge the pedal. Let the Genius Zip ahead.



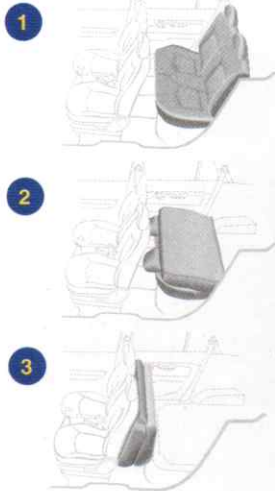


*Tall. Wide. And distinctly different, the Hyundai Santro has a unique and sensuous styling. Its sleek lines and pleasing curves and contours will capture your heart. The compact outer dimensions combined with its new sporty stance excites the emotions and makes it stand out in a crowd of old hatch backs and jelly bean shapes. So step into the Santro. And get ready to get noticed, while the multi-functionality takes care of all your needs and desires.*

**The Hyundai Santro.  
The hallmark of  
Multi functionality.  
The epitome of modern  
Design.**

### Amazing Versatility

You can create your own space in the SANTRO. With adjustable front seats and dual folding rear seats, the SANTRO can be converted from a highway cruiser to a shopping car in seconds. The hi-lift hydraulically damped rear tail-gate makes loading and unloading easy.



#### Santro seat variations

You can fold the seats in the Santro in more ways than one to create extra space.

### Tall & Wide

The height and width of the SANTRO makes it one of the most spacious cars on road. Massive front and rear wind screens, large wide-opening doors, the magnificent tail-gate will change your very perception of a small car.



### Aerodynamic Styling



The low drag coefficient of the wind tunnel developed shape of the SANTRO ensures maximum fuel economy. The specially designed

front air-scoop maximises air flow into the radiator. Keeping it cool at all times.





## Responsive, caring engineering for sheer driving comfort.

*Santro has been extensively tested over 1,00,000 kilometers in real Indian road and climatic conditions.*

*The power-assisted brakes, the suspension, the high ground clearance. The uniquely responsive technology.*

*Every feature and design is perfected to give you maximum driving comfort.*

### Maneuverability with ZipDrive



With the ZipDrive, Hyundai endeavours to bring the ease, comfort, safety and the fun of Power Steering to everybody.

With Power Steering lock to lock turn of the steering wheel is substantially lesser; the effort required to turn the wheel is minimal. So now, squeezing into difficult

parking lots, negotiating the rush-hour traffic, is not just effortless but fun, as well. Ability to absorb jerks of pot-holed roads and much greater control of the steering wheel, not only helps you to glide over the roads but also provides enhanced safety in case of accidents like bursting tyres. ZipDrive is here for you, go ahead, turn the world on your finger.

### World class McPherson Strut Suspension.

The Santro offers McPherson Strut Suspension in the front with stabilizer bar. In the rear, you have the torsion beam axle, 3-link offset coil springs and hydraulic dampers. This helps to iron out the potholed Indian roads with a smile.

Not only that, the wider tyres give you sure footedness even on slippery surfaces.



World class suspension for extra comfort in Indian driving conditions

## Advanced safety engineering for your protection and peace of mind.

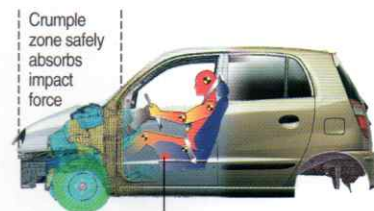
*Safety is not just a feature of the Hyundai Santro.*

*It is an integral part of the total car design engineering.*

*So every single system in the car contributes to making the Hyundai Santro one of the safest and strongest vehicles in India.*

### Safety Frame & Zone

A pair of ultra-high strength steel members are built into the doors for additional protection against side impact.



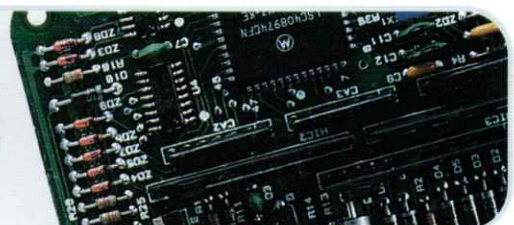
Occupants are protected by safety cell  
Tested for safety on one of the most gruelling test tracks in the world.



Frontal impact test at 60km/h.



# THE GENIUS IS INSIDE





## Key Technical Specifications and Features

<b>Dimension &amp; Weight</b>	Overall Length	3495 mm
	Overall Width	1495 mm
	Overall Height	1590 mm
	Wheelbase	2380 mm
	Front Track	1315 mm
	Rear Track	1300 mm
	Fuel Tank Capacity	35 L
	Unladen weight	776 kg
	Ground Clearance	172 mm
<b>Engine</b>	Model Designation	Hyundai Epsilon Engine
	Configuration and Fuel System	In-line 4-cylinder 12-Valve SOHC Multipoint fuel injection
	Displacement	999 cc
	Ignition System	Electronic Ignition System
	Emission Control System	3-way Catalytic Converter with Evaporative Gas Control
	Cylinder Head	Aluminum
	Combustion Principle	4-Stroke
<b>Performance</b>	Max. Horsepower	55.0/5500 ps/rpm
	Max. Torque	8.4/2500 kgm/rpm
<b>Suspensions</b>	Front Suspension	MacPherson Strut with Stabilizer Bar
	Rear Suspension	Torsion Beam Axle, 3-Link Offset Coil Springs & Hydraulic Dampers
<b>Steering</b>	Steering System	Rack and Pinion
	Min. Turning Radius	4.4 m
<b>Brakes</b>	Front Brakes	Discs
	Rear Brakes	Self-Adjusting Drums
	Pad Wear Warning Clip	Standard
	Booster(capacity)	Vacuum Assisted (7 inches)
<b>Tyres &amp; Wheels</b>	Tyres	155/70 R 13 Radial

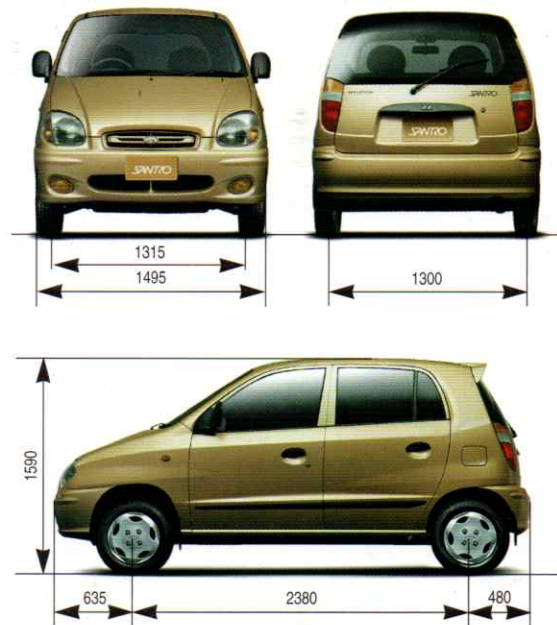
Feature	Items	LE	LS	GS
<b>Safety Features</b>	Dual-Member Side Impact Protection	•	•	•
	Child-Safety Rear Door Locks	•	•	•
	Energy-Absorbing Collapsible Steering Column	•	•	•
	Central Door Locking	•	•	•
	Day & Night Mirror	•	•	•
	Rear Seat Belts	•	•	•
<b>Exterior Features</b>	Body Coloured Bumper	•	•	•
	Waistline Moulding	•	•	•
	All Around Tinted Glass	•	•	•
	Front / Rear Mud Guard	•	•	•
	Rear Wiper & Washer	•	•	•
	Rear Defogger	•	•	•
	Rear Spoiler w/o HMSL	•	•	•
	New Horizontal Radiator Grille	•	•	•
	Hub Cap	•	•	•
	Full Size Wheel Cover	•	•	•
Front Fog Lamps	•	•	•	
<b>Interior Features</b>	Deluxe Console	•	•	•
	Room Lamp	•	•	•
	Dual Horn	•	•	•
	Glove Box With Cover	•	•	•
	Ashtray	•	•	•
	Cigar Lighter	•	•	•
	Intermittent Wiper	•	•	•
	Front Door Map Pocket	•	•	•
<b>Seating</b>	Adjustable Front & Rear Seat Headrests	•	•	•
	Rear Seat Double Folded	•	•	•
	Front Seatback Pockets	•	•	•
<b>Comfort &amp; Convenience</b>	Full Cloth Upholstery	•	•	•
	3-Spoke PP Steering Wheel	•	•	•
	A/C with Ozone-Friendly R134a Gas	•	•	•
	Heater	•	•	•
	Vanity Mirror	•	•	•
	Front Power Windows	•	•	•
	Power Steering	•	•	•
	Leather Wrapped Steering Wheel	•	•	•
	Key Type Fuel Filler/Tail Gate	•	•	•
	Remote Type Fuel Filler/Tail Gate	•	•	•

Features mentioned above may not be a part of standard equipment. All specifications are subject to change without prior notice.



### Networked for Customer Care.

The Hyundai Santro is backed by one of the largest service networks in India. To begin with, the car rolls out through a dedicated Pre-Shipment Quality check centre at our Chennai Plant. A web of over 80 Dealers, Dealer branches and Hyundai Authorized Service Centers (HASC's) each comprehensively equipped with state of the art workshop technology, equipments and customer oriented trained manpower ensure total peace of mind anywhere in India. And the best part is that this number is steadily increasing. Moreover all dealers are equipped with Emergency Road Service (ERS) cars to cater to any problems anywhere. Obviously the Hyundai Santro will never be too far away from help, if it needs any.



### Color Guide



\*Actual body colour may differ slightly from the printed photos in this catalogue.

# SANTRO

## zipDrive

# HYUNDAI

Hyundai Motor India Limited

A-30, Mohan Cooperative Industrial Area Phase-1, New Delhi - 110044

E-mail : hmidelhi@nde.vsnl.net.in

Website : www.hyundaimotorindia.com

Tel : (011) 695-9110 Fax : (011) 695-9019/9020

Dealer's Name and Address