



Connection offline

Technical product information

Transaction No.: **2033456/1**

1.6l CR Injectors_Electrical fault

Release date: 28-Mar-2013

Customer statement / workshop findings

- Engine vibration / misfiring
- Engine jerking & knocking noise

Technical background

Engine noise due to following electrical faults in injector circuit:

1st Injector - P020100 - Cylinder 1- Injector Circuit

2nd Injector - P020200 - Cylinder 2- Injector Circuit

3rd Injector - P020300 - Cylinder 3- Injector Circuit

4th Injector - P020400 - Cylinder 4- Injector Circuit

Due to these faults, Engine MIL / glow plug light is ON.

Production change

Improved injectors are implemented in series production at VWIPL from CW03/13. **Cut-Off VIN - TMBBLANA9DG035155.**

Measure

Check electrical connection of injector for loose contact & contact corrosion, if found then repair accordingly.

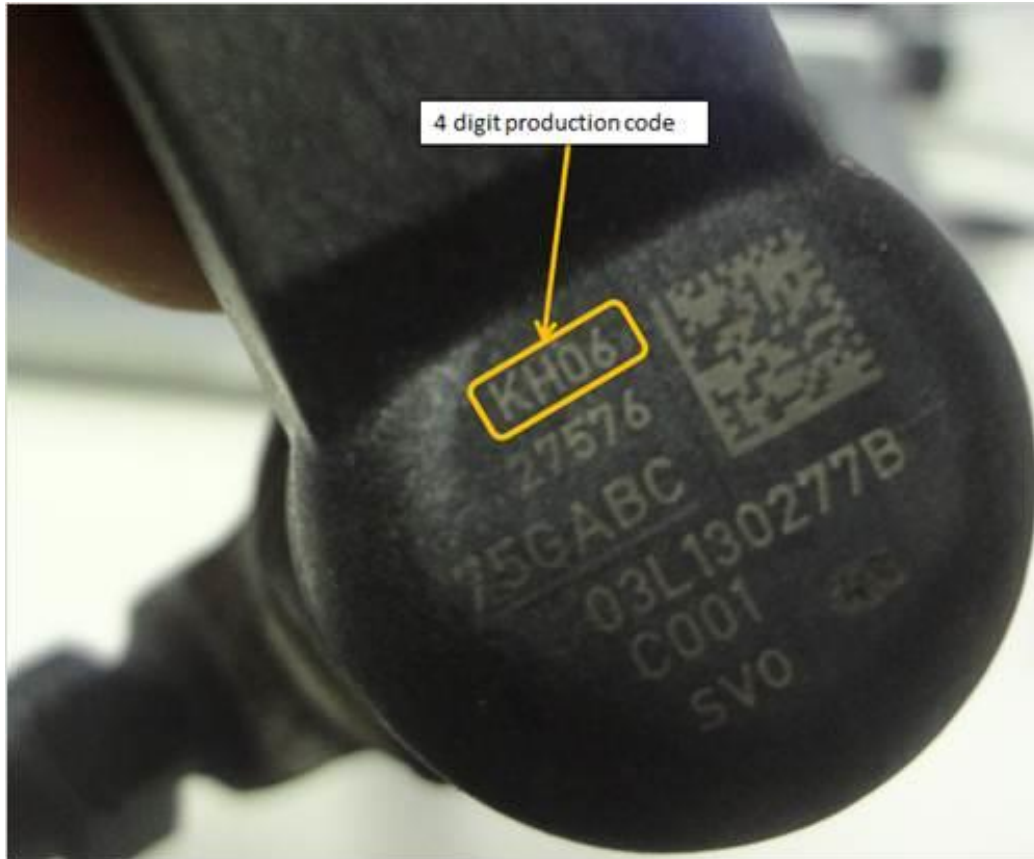
In the event of above faults observed in diagnostic log, Take pictures of faulty injector (which is recognised as an electrical fault in diagnostic log) as shown in below picture:



Defective injector must be replaced by improved injector as per following guidelines:

All injectors which are produced after 15th Jun.2012 are improved & should be used for replacement of defective injectors.

Please read four letter code on Injector e.g. KH06 (06th Aug 2011)



K – Year - 11th Letter of alphabet which stands for Calendar year – 2011

H – Month - 8th letter of alphabet which stands for Month – August

06 – Date - 06th day of month

After the injector replacement, ECU software update & MFMA to be done & ensure complaint is rectified before delivery of the car.

Please attach fresh diagnostic log after confirming there is no fault in event memory.

If complain still persists establish the precise complaint using GFF & make DISS ticket for further technical assistance.

Warranty accounting instructions

Topic	Injector failure in CLNA engine (1.6l CR 77kW)	
Claim Type	1 – 10	Vehicle Warranty after delivery of vehicle
	9 – 10	Vehicle Warranty before delivery of

		vehicle
Service No	2340 – Injector	
Damage code	0040	Electrical Fault
MFG Code	SVO	
Repair Operation		Time Units
0150 0000 – GFF / Guided Function & (EDC Control Unit SW update)		40 TU
If one or two injectors out of four found faulty, need to replace; use below Labour operation with GFF		
2340 2030 – <u>Injector remove + reinstall</u>		110 TU
If three or all four injectors found faulty, need to replace; use below Labour operation only with GFF		
2340 2040 – <u>Injector remove + reinstall</u>		190 TU
Make a Technical Query in DISS for every complaint.		

Important notes for warranty accounting:

TPI instructions must be followed. All relevant pictures to be attached in DISS./

Only defective single injector need to be replaced.

Complete GFF diagnostic protocol (with SW adaptation till successful adaptation of min. qty adaptation) must be attached in DISS Ticket.

Warranty claims will be rejected if injectors manufacturing code pictures & diagnostic log with complete step of software update and MFMA is not attached in DISS.