

# New Renault **TRIBER**

2021

Space for everything



**EASYFIX**  
SEATS

**ENERGY**  
ENGINE

**EASY-R**



# TRIBER AGENDA

## STRENGTHENING OF TRIBER PRODUCT PILLARS

- ❖ FLEXIBLE
- ❖ ATTRACTIVE
- ❖ AFFORDABLE

## TRIBER FEATURES & BENEFITS WITH FIRST AND BEST-IN-CLASS FEATURES

## VARIANT GRADEWALK, COLORS AVAILABLE & ACCESSORIES





# THE 3 PILLARS FURTHER STRENGTHENED

## TRIBER IS NOW

**MORE FLEXIBLE**



**MORE ATTRACTIVE**



**MORE AFFORDABLE**



## MORE FLEXIBLE

What makes it so..



**DRIVER SEAT HEIGHT ADJUST**

2 NEW ADDITIONS IN THE RANGE.



**STEERING MOUNTED AUDIO + PHONE CONTROLS**

RENAULT TRIBER

## MORE ATTRACTIVE

**4 NEW** ADDITIONS IN THE RANGE.

DUAL HORN



DUALTONE  
EXTERIORS

NEW BODY  
COLOUR  
CEDAR  
BROWN

LED TURN INDICATORS  
ON ORVMS



# MORE AFFORDABLE

## 3 REASONS



**INCREASED CUSTOMER  
ADVANTAGE**

**MORE VALUE FOR THE  
PRICE**



**MOST AFFORDABLE AMT**



**LOW MAINTENANCE**  
**33% less expensive than Swift**

# 3 PILLARS

## PRODUCT PILLARS IN DETAIL

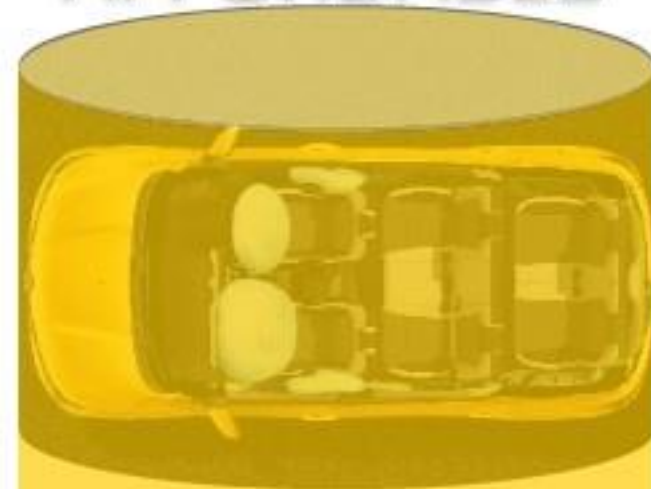
**FLEXIBLE**



**ATTRACTIVE**



**AFFORDABLE**



## FLEXIBLE

**Amazing flexibility for up to 7 passengers**  
that answer to all customers needs

**FLEXIBILITY MEANS:****BEST 3<sup>rd</sup> ROW LEVEL INGRESS / EGRESS**

- Rear door angle opening of 74°
- **Tumble** function for 2<sup>nd</sup> row 40% portion

**BREAKTHROUGH VERSATILITY**

- Driver Seat Height Adjust - **NEW**
- 2<sup>nd</sup> row seats with Slide, Recline, Fold & Tumble function
- EASYFIX seats, Industry 1<sup>st</sup> for 3<sup>rd</sup> row
- Fold, Tumble and Removable for 3<sup>rd</sup> row seats

**BEST LEVEL OF COMFORT AT EACH ROW**

- Steering Mounted Audio + Phone Controls - **NEW**
- Twin AC with 2<sup>nd</sup> & 3<sup>rd</sup> row vents and independent controls





# FLEXIBLE

*Amazing flexibility for up to 7 passengers  
that answer to all customers needs*

## FLEXIBILITY MEANS:

### BEST LEVEL STORAGE / CARGO SPACE

- Boot space: up to **625L**  
**x 2.4** vs SWIFT & Grand i10 Nios  
respectively.
- Internal storage area: **24L**  
**+ 100%** more than SWIFT



**Amazing flexibility for up to 7 passengers**  
that answer to all customers needs



### FLEXIBILITY:

**IMPRESSIVE ROOMINESS** for 1 to 7 adults in less than 4 meters.

- Overall length : 3990 mm
- Overall width - without mirrors : 1739 mm
- Overall height (w/o roof rail) : 1643 mm
- Cabin Length : 2,933 mm
- Front Track with 15" wheels (RXZ Variant) : 1547mm
- Rear Track with 15" wheels (RXZ Variant) : 1545 mm

### **ASTONISHING SPACE INSIDE**

- Front couple distance 710 mm





RENAULT TRIBER

**FLEXIBLE**

**100+**

SEATING CONFIGURATIONS

5 seater  
LIFE MODE

7 seater  
TRIBE MODE

2 seater  
CAMP MODE

4 seater  
SURF MODE



# 3 PILLARS

## PRODUCT PILLARS IN DETAIL

FLEXIBLE



ATTRACTIVE



AFFORDABLE





# ATTRACTIVE

## SUV WORLD

### OUTSIDE...

#### PROPORTIONS

- Strong road presence with a **1739 mm** car width



#### STYLE - UTILITY - PROTECTION

- High ground clearance: **182 mm**
- Wheel Arch Cladding
- Roof Rails with Load Carrying Capacity (50kg)
- SUV Skid Plates - Front & Rear
- Led Turn Indicators On ORVM - **NEW**



#### CHROME

- Triple Edge Chrome Front Grille



The tough and robust appearance combined with elegant character makes Renault TRIBER stand out



## SUV WORLD



### INSIDE...

**HIGH DRIVING POSITION** for a maximum visibility

**SEATS FABRIC** different for each trim

**CHROME** inserts

**REAR WIPER, WASHER & DEFOGGER**

Quality and attention to detail





**DUALTONE EXTERIORS**

**NEW**



**BODY COLOUR**



**BODY COLOUR**



**BODY COLOUR**



**BODY COLOUR**



**BODY COLOUR**



# ATTRACTIVE

## MODERN FEATURES



**PROJECTOR HEADLAMPS**

**NEW LED turn indicators on ORVM**



**SMART ACCESS CARD**

**EAGLE BEAK SPLIT TAIL LAMPS**



**ELECTRIC POWER STEERING**



**LED INSTRUMENT CLUSTER**





# ATTRACTIVE

## ROBUSTNESS

**APPROACH ANGLE** of  $22.7^{\circ}$   
And departure angle  $21.7^{\circ}$

### RELIABILITY

Over 1 million kms of durability validation done on proving grounds

### SUSPENSION SYSTEM

Adapted to Indian roads

- Front: McPherson Strut with Lower Triangle & Coil Spring
- Rear: Torsion Beam Axle



# ATTRACTIVE

## SAFETY

### SEAT BELTS

- Pre-tensioner
- Load Limiter
- Seat Belt Reminder – Driver & Passenger

### Up to 4 AIRBAGS

- 2 Front } For Driver & Passenger
- 2 Side }



### PEDESTRIAN PROTECTION



Image for illustration





## SAFETY



REAR PARKING SENSOR

ABS + EBD

SPEED ALERT WARNING

SPEED SENSING DOOR LOCK

SEAT BELT REMINDER - DRIVER & PASSENGER

## ONBOARD TECHNOLOGIES

### MediaNAV Evolution with 20.32cm Touchscreen (World premier on this segment in India)

- Voice Command
- Eco Driving



### SMARTPHONE REPLICATION

- Apple CarPlay
- Android Auto

**PORTS:** AUX-in, USB **fast charge** (with MediaNAV Evolution),  
12V Accessory Socket

### REAR VIEW CAMERA

### RADIO CONNECT R&GO





# 3 pillars

Lets see the Product Pillars in detail

FLEXIBLE



ATTRACTIVE



AFFORDABLE



# TRIBER is BS6 COMPLIANT!!

1.0 L ENERGY Engine

**BS6**  
COMPLIANT



## TRIBER BS VI Fuel Efficiency (kmpl)

TRIBER 1.0 L (MT)

19.00

TRIBER 1.0 L (AMT)

18.29

### Major Technical Specification:

- Displacement : 999 cc
- ENERGY Engine Technology
- Max. Power: 72 PS @ 6250 rpm
- Max. Torque: 96 Nm @ 3500 rpm





# Automated Manual Transmission



- ❖ Ease and convenience of driving an Automatic
- ❖ High Fuel Economy than conventional AT
- ❖ Exhibits Creep function
- ❖ Option to shift gears manually
- ❖ Cost optimized
- ❖ Lower cost of maintenance

AVAILABLE VARIANTS :

- RXL
- RXT
- RXZ

## Traffic Assist Mode ( Creep Function)



AVAILABLE VARIANTS :

- RXL
- RXT
- RXZ

Ensures ease for drivers at traffic allowing the vehicle to move automatically without using the accelerator pedal



# AFFORDABLE

Let us learn about TRIBER's AFFORDABLE pillar by comparing against its competition



## AFFORDABLE

## SUV LOOK AND ROBUSTNESS

Upper  
Segment

	TRIBER	SWIFT	GRANDi10 Nios	ERTIGA
Wheel Arch Cladding	✓	✗	✗	✗
Triple Edge Chrome Front Grille	✓	✗	✗	✗
Roof Rails with Load Carrying Capacity (50kg)	✓	✗	✗	✗

Ground clearance : 182 mm

More value in Renault TRIBER : More SUV Looks





**AFFORDABLE**



**DRIVER COMFORT**

**HANDS-FREE KEYLESS ACCESS**

**ELECTRIC STEERING WHEEL**

**STEERING WHEEL TILT ADJUSTMENT**

**HIGH DRIVING POSITION**



AFFORDABLE



MULTIMEDIA SYSTEM

15 18

Radio

Media

Driving Eco2

Phone

Setting



## MULTIMEDIA SYSTEM

Upper Segment

	TRIBER	SWIFT	GRANDi10 Nios	ERTIGA
LED Instrument Cluster	✓	✗	✗	✗
Projector Headlamps	✓	✓	✓	✓
MediaNAV Evolution with 20.32cm Touchscreen	✓	✗	✗	✗
ECO Driving	✓	✗	✗	✗



Bluetooth Connectivity

USB Video Playback

Rear View Camera

**More value in Renault TRIBER : More Modern Features**

RENAULT TRIBER

AFFORDABLE

**FLEXIBILITY ROOMINESS COMFORT**



## FLEXIBILITY ROOMINESS COMFORT

	TRIBER	SWIFT	GRAND i10 Nios	ERTIGA
Automated Manual Transmission	✓	✓	✓	AT
2nd row seats with Slide, Recline, Fold & Tumble Function	✓	✗	✗	✗
Easy Fix seats (3rd row) with Fold & Tumble Function	✓	✗	✗	✗
Twin AC with 2nd/3rd Row Vents and Independent Control	✓	✗	✗	✗
Cooled Storage In Center Console	✓	✗	✗	✗
Cooled Lower Glove Box	✓	✗	✓	✗
Upper Glove Box	✓	✗	✗	✗
12V Socket - 2nd row	✓	✗	✓	✓
12V Socket - 3rd row	✓	NA	NA	✓

Upper Segment



Loading Access Height

**More value in Renault TRIBER : More Flexibility + Modularity**



# AFFORDABLE

## COMPARISON



	Renault TRIBER	SWIFT	GRAND i10 Nios
STORAGE SPACE	Up to 24L	15.5L	NA
TOTAL TRUNK SPACE	Up to 625L	266L	260L
LOADING ACCESS HEIGHT	664.5 mm	743 mm	720 mm <small>*This value is calculated from Grand i10</small>

RENAULT TRIBER

AFFORDABLE

***SAFETY***





## SAFETY

	TRIBER	SWIFT	GRANDi10 Nios	ERTIGA
Side Airbag - Driver + Passenger	✓	✗	✗	✗

Upper Segment



ELR Seatbelts

LED DRLs

Anti-lock Braking System

Rear Parking Sensors

**More value in Renault TRIBER : More Safety**



AFFORDABLE

The size of Upper B-segment car

The Fuel consumption of lower  
B-segment car

The roominess of almost C-segment car



BEST VALUE FOR MONEY

8

FIRST-IN-CLASS



1	Industry <b>1<sup>st</sup></b> EASYFIX Seats	5	SUV Skid Plates - Front & Rear
2	ECO Driving	6	Roof Rails with Load Carrying Capacity (50kg)
3	4 Airbags	7	Wheel Arch Cladding
4	LED Instrument Cluster	8	Eagle Beak Split Tail Lamps

**Available feature in the segment, further Enhanced in Renault Triber**





1	Overall Length = 3990 mm	15	100+ Seating Configuration
2	Overall Width = 1739 mm	16	3 <sup>rd</sup> Row Ingress / Egress
3	Height (w/o roof rail) = 1643 mm	17	2 <sup>nd</sup> Row Seats with Slide, Recline, Fold & Tumble
4	Wheelbase = 2636 mm	18	Boot Capacity - 625 L (in Life Mode)
5	Front Track = 1547 mm * Available in RXE/RXL/RXT variants with 14" Wheels	19	High Ground Clearance - 182 mm
6	Rear Track = 1545 mm * Available in RXE/RXL/RXT variants with 14" Wheels	20	Twin AC with 2 <sup>nd</sup> /3 <sup>rd</sup> Row Vents and Independent Control
7	1 <sup>st</sup> Row Couple Distance = 710 mm	21	B-Pillar Mounted 2 <sup>nd</sup> Row AC Vents
8	2 <sup>nd</sup> Row Knee Room = 200 mm	22	Roof Mounted 3 <sup>rd</sup> Row AC Vents
9	3 <sup>rd</sup> Row Knee Room = 91 mm	23	High Driving Position
10	3 <sup>rd</sup> Row Vertical Height = 834 mm	24	MediaNAV Evolution with 20.32cm Touchscreen
11	Upper Glovebox = 4.4 L	25	Interior cabin length – 2933 mm
12	Cooled Lower Glovebox = 7 L		
13	Cooled Storage In Center Console		
14	Total Interior Storage Upto 24L		

**Available feature in the segment,  
further Enhanced in Renault Triber**



RENAULT TRIBER

# RENAULT **TRIBER** - The GAMECHANGER



Renault TRIBER is **UNBEATABLE**

in terms of price for 1 to 7 seaters under 4 meters

With 8 **FIRST** and 26 **BEST IN CLASS** features!



Let us learn highlighting the feature-benefits to our customers



## Renault TRIBER

### Features & Benefits



**BEST-IN-CLASS**



**FIRST-IN-CLASS**

FIC / BIC	S.NO	FEATURES	BENEFITS
<b>POWERTRAIN</b>			
	1	1.0L Energy Engine – BS6 Complaint	Perfect blend of performance and efficiency
<b>EXTERIORS</b>			
	2	SUV –like Looks	Bold distinct look, rugged road presence
	3	Projector Headlamps	Focused beam for excellent illumination & visibility
	4	LED DRLs	For attractive looks and makes you be seen
	5	15” Styled Flex Wheels	Sporty alloy-like appearance
	6	Wheel Arch Cladding	Muscular and armoured side profile
	7	SUV Skid Plates - Front & Rear	Underbody protection and presence of an SUV
	8	Roof Rails with Load Carrying Capacity (50kg)	Can be loaded upto 50kgs, give a sporty profile
	9	Black-end B & C Pillars	Masking of pillars gives a floating roof illusion
	10	Eagle Beak Split Tail Lamps	Stylish looking split taillamp; easily visible



## Renault TRIBER





## Features &amp; Benefits



BEST-IN-CLASS



FIRST-IN-CLASS

FIC / BIC	S.NO	FEATURES	BENEFITS
<b>INTERIOIRS</b>			
	11	Dual Tone Dashboard	Rich in cabin experience
	12	24L of Internal Storage	Practical storage solution for Knicks and knacks
	13	LED Instrument Cluster	Digital cluster for modern looks and easy viewability
<b>COMFORT &amp; CONVENIENCE</b>			
	14	McPherson Strut with Lower Triangle & Coil Spring and Torsion Beam Axle	Benchmark ride and handling
	15	Rear AC Vents on B-pillars	Effective circulation and cooling, more headroom
	16	Cooled Lower Glove Box	Boon while travelling in hot summer, get chilled beverages



## Renault TRIBER

### Features & Benefits



**BEST-IN-CLASS**



**FIRST-IN-CLASS**

FIC / BIC	S.NO	FEATURES	BENEFITS
<b>COMFORT &amp; CONVENIENCE</b>			
	17	Rear View Camera & Rear Parking Sensor	Convenient & safe way of reversing and parking
	18	Rear Wiper Washer	Improved rear visibility with clean windscreen
	19	Rear Defogger	Clears condensed water droplet for good rear view
	20	3 <sup>rd</sup> Row Dedicated AC Vents	Dedicated vents ensuring comfort of all passengers
	21	12V Accessory Socket	Charge your mobile devices sitting anywhere in the car
	22	Electric Power Steering	Optimised steering effort for city drive; feels good to hold and turn
	23	Push Button Start / Stop	Convenient start/stop of engine without key
	24	MediaNAV Evolution with 20.32cm Touchscreen	Innovative multimedia that entertains; compatible with Apple CarPlay & Android Auto
	25	Smart Access Card	Keyless and handsfree entry / exit from the car
	26	Eco Driving	Scoring & coaching based to optimize fuel consumption

## Renault TRIBER






### Features & Benefits



**BEST-IN-CLASS**



**FIRST-IN-CLASS**

FIC / BIC	S.NO	FEATURES	BENEFITS
<b>SAFETY &amp; SECURITY</b>			
	27	4 Airbags	Protection incase of mishaps
	28	Door Ajar Warning	Indicates precisely which door is not properly shut
	29	Pro-sense Seat Belts for Driver	Pretensioner and load limiter for maximum driver protection
	30	ABS & EBD	Maximum control, Shorter braking distance
<b>DIMENSIONS AND CAPACITIES</b>			
	31	3990x1739x1643 (mm)	Proportionate dimensions of an everyday car
	32	WB : 2636 mm	Impressive roominess at 3.99 m length
	33	GC : 182 mm	Bold road presence of an SUV
	34	Flexible Boot Space	Smart storage solution for changing needs





**GRADEWALK, COLORS &  
ACCESSORIES**



# VARIANT GRADEWALK

## RXE

### EXTERIORS

- Projector Headlamps
- Wheel Arch Cladding
- Eagle Beak Split Tail Lamps
- Wheel rim size - R14
- Wheel Centre Cap
- Body Colour Bumper
- Black ORVM
- Black Door Handle

### COMFORT

- Electric Power steering
- On Board computer
- Electric Tail Gate Release on Centre Console
- Front Power Windows
- Air Conditioning
- 12V Socket - 1st Row only
- 60:40 Split 2nd Row Seat
- 2nd Row Seats with Slide, Recline, Fold & Tumble Function
- EasyFix Seats (3rd Row) with Remove, Fold & Tumble Function
- Open Storage on Centre Console

### INTERIORS

- Dual Tone Dashboard
- LED Instrument Cluster - Amber Colour
- Black Inner Door Handles
- Meson Black Fabric Upholstery

### SAFETY

- Front Airbag - Driver & Passenger
- Load Limiter + Pre Tensioner (Driver only)
- ABS & EBD
- Speed Alert Warning
- Seat Belt Reminder - Driver + Passenger
- Rear Parking Sensor
- Pedestrian Protection

## RXL

**RXL = RXE +**

### EXTERIORS

- Front Grille with Chrome Insert (Top Line)
- Full Plastic Wheel Cover
- Body Colour Door Handle
- Black Decal on Door
- Black Coloured B & C Pillar
- Body Colour ORVM

### COMFORT

- Height Adjust Tilt Steering
- Remote Central Locking
- Twin AC with 2<sup>nd</sup> & 3<sup>rd</sup> Row Vents and Independent Control
- R&GO Audio system with Bluetooth & USB Connection
- 2 Front Speakers
- ORVM - Manual Internal Adjust
- Rear Assist Grips on 2<sup>nd</sup> & 3<sup>rd</sup> Row
- Cooled Storage in Center Console

### INTERIORS

- Dual Tone Dashboard with Piano Black Finish
- Air Vents (Front - Side) with Satin Outline
- Instrument Cluster with Satin Semi-Outline
- LED Instrument Cluster - White Colour
- HVAC Knobs with Chrome Ring

### SAFETY

- Speed Sensing Door Lock
- Impact Sensing Unlock

**\*Also available in AMT**

# VARIANT GRADEWALK

**RXT**
**RXT = RXL +**

## EXTERIORS

- Triple Edge Chrome Front Grille
- Roof Rails with Load Carrying Capacity (50kg)
- SUV Skid Plates – Front & Rear

## COMFORT

- ORVM - Electrical Adjust
- Rear Power Windows
- Front Seat Back Pocket - Passenger & Driver Side
- MediaNAV Evolution with 20.32cm Touchscreen
- 2 Rear Speakers
- Day & Night Adjustable IRVM
- Vanity Mirror - Passenger Side
- Rear Room Lighting
- Upper Glove Box
- Cooled Lower Glove Box
- 12V Socket - 2nd row

## INTERIORS

- Air Vents (Front - Side) with Chrome
- Instrument Cluster with Chrome Semi Outline
- Japda Fabric Upholstery

**\*Also available in AMT**

**RXZ**
**RXL = RXT +**

## EXTERIORS

- 15" Styled Flex wheels
- LED DRLs

## COMFORT

- Smart Access Card
- Push Button Start / Stop
- Rear Wiper, Washer & Defogger
- Auto Up Down with Anti Pinch – Driver Window
- 2 Front Tweeters
- Rear View Camera
- Vanity Mirror - Driver Side
- 12V Socket - 3rd Row

## INTERIORS

- Dual Tone Dashboard with Silver Accent
- 3D Spacer Fabric Upholstery
- Chrome Finished Parking Brake Button, Knobs on Front Air Vents, Push Button Surround
- Piano Black Finish Around MediaNAV Evolution
- Silver Finish - Inner Door Handles, Gear Knob, Steering Wheel Insert

## SAFETY

- Side Airbags - Driver + Passenger

**\*Also available in AMT**



# COLOUR DIVERSITY

## 5 MONOTONE

COLOUR	STATUS	Versions
WHITE	Continue	All (MT + AMT)
SILVER	Continue	All (MT + AMT)
BLUE	Continue	All (MT + AMT)
MUSTARD	Continue	All (MT + AMT)
RED	Discontinued	-
BROWN	New	All (MT + AMT)

## 5 DT COLOURS

COLOUR	STATUS	Versions
WHITE	New	Only On RXZ
SILVER	New	Only On RXZ
BLUE	New	Only On RXZ
MUSTARD	New	Only On RXZ
BROWN	New	Only On RXZ

## ACCESSORIES



FOG LAMP GARNISH



TAIL LIGHT CHROME



CHROME DOOR HANDLE



MUDFLAP



ROOF CARRIER



## ACCESSORIES



BODY SIDE CLADDING



SPOILER



TAILGATE GARNISH



WIND DEFLECTOR WITH  
CHROME INSERT



WINDOW FRAME

Widest Selection of  
**46 Categories**

# SUMMARY

## TRIBER PRODUCT PILLARS:

- ❖ FLEXIBLE
- ❖ ATTRACTIVE
- ❖ AFFORDABLE

## FLEXIBLE:

- ❖ Amazing flexibility for up to 7 passengers that answer to all customers needs
- ❖ 100+ Seating Configuration

## ATTRACTIVE:

- ❖ SUV World
- ❖ Modern Features
- ❖ Robustness
- ❖ Safety
- ❖ Onboard Technologies
- ❖ New Body colour

## AFFORDABLE:

- ❖ Best Value For Money Amongst Its Competitions
- ❖ Most affordable AMT

## TRIBER FEATURES & BENEFITS WITH FIRST AND BEST-IN-CLASS FEATURES

## VARIANT GRADEWALK, COLORS AVAILABLE & ACCESSORIES





# THANK YOU!



Feel free to share your views, concerns & doubts at  
[renaulttraining.ttiindia@gpstrategies.com](mailto:renaulttraining.ttiindia@gpstrategies.com)