

XUV 700 Accessories

Sept 2021

XUV700 Accessories

Mahindra
GENUINE ACCESSORIES



Satin Chrome Kit

ORVM applique



Front Bumper Lower applique

Grille Upper applique

Front Bumper Upper applique

Satin Chrome Kit includes –

1. Grille Upper applique
2. Front Bumper Upper applique
3. Front Bumper Lower applique
4. ORVM applique
5. Body side moulding
6. Wheel arch chrome set
7. RR Bumper lower applique

All Parts in Premium Satin Finish matching with OE gloss level

Wheel arch chrome

Body Side Molding

Rear Bumper applique



PART DESCRIPTION

PART NUMBER

Satin Chrome Kit – XUV700

AW60082

Images for Reference, Actual part may differ from represented image

Satin Chrome Kit

ORVM applique



Front Bumper Lower applique

Grille Upper applique

Front Bumper Upper applique

1. Features

- Built with Auto grade ABS material with 40 Micron Satin Chrome finish
- Perfectly matches the vehicle profile

2. Advantages

- Gives premium look to the vehicle
- Rust resistant
- Available with 1 Year warranty

3. Benefits

- Accentuates the bold lines of the car
- Makes your car stand out from the crowd

4. Technical Specification

- High Quality ABS Material with 40 micron satin chrome plating
- Double sided 3M Tape of grade PT Series

5. Applicability: All variants

Wheel arch chrome

Body Side Molding

Rear Bumper applique



PART DESCRIPTION

PART NUMBER

Satin Chrome Kit – XUV700

AW60082

Images for Reference, Actual part may differ from represented image

Mud flap set

1. Features

- Prevent splashes with a set of 4 high quality moulded mudflaps

2. Advantages

- Protection and style in a cost effective package
- Available with 1 Year Warranty

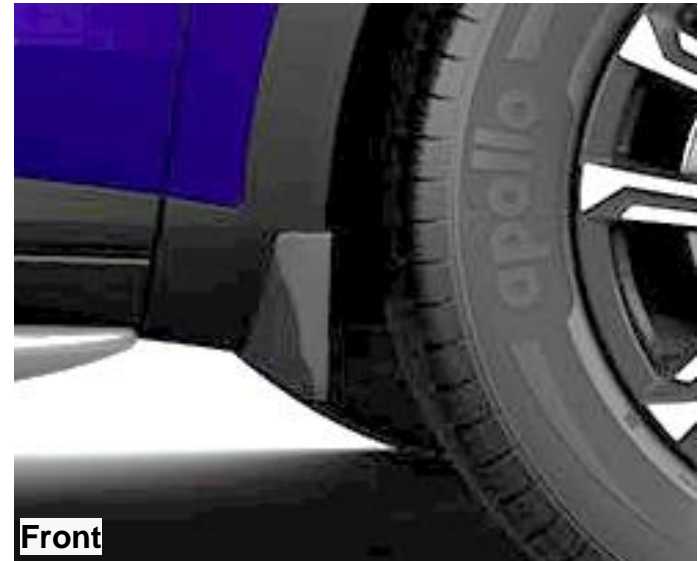
3. Benefits

- Protect the vehicle sides and underbody from mud and dirt

4. Technical Specification

- Automotive grade Polypropylene material

5. Applicability: All variants



PART DESCRIPTION	PART NUMBER
Mud Flap Kit - W601 (4 pc)	AW60001

Side Step set

1. Features

- Powder coated rust free aluminium construction
- Unique design with plastic inserts to complement vehicle design

2. Advantages

- Sturdy body mounting system for flex free performance
- Available with 1 Year warranty

3. Benefits

- Reduced vibrations and noise
- Easy ingress & egress from car
- Adds style and a premium feel to the car

4. Technical Specification

- Aluminium construction
- Formed MS brackets

5. Applicability: All variants



PART DESCRIPTION	PART NUMBER
Side Foot Step Set – W601	AW60021
Bracket - Side Foot Step Set - XUV700	AW60083

Integrated Roof Carrier



1. Features

- Robust construction using automotive grade fasteners and fittings
- All metal frame construction with superior powder coating for brackets
- Blow molded ABS frame for the integrated look
- Rated up to 70 kgs.

2. Advantages

- Light-weight
- Easy fitment
- Available with 1 Year warranty

3. Benefits

- Adds a style element to the vehicle when not in use
- Reduced vibrations and noise

PART DESCRIPTION	PART NUMBER
Integrated Roof Carrier Set – W601	AW60020

Images for Reference, Actual part may differ from represented image

Roof Bar Set

1. Features

- Robust construction using automotive grade fasteners and fittings
- Aluminium bars with superior powder coating for brackets
- Rated up to 70 kgs.

2. Advantages

- Light-weight
- Easy fitment
- Available with 1 Year warranty

3. Benefits

- Adds a style element to the vehicle when not in use
- Reduced vibrations and noise



PART DESCRIPTION	PART NUMBER
Roof Bar Set – W601	AW60040

Rear Bumper Protector Design 1

1. Features

- Made from OE grade SS & plastic inserts
- Formed brackets for sturdy and rigid construction

2. Advantages

- Adds to premium look to the vehicle as well as protects rear bumper
- No interference with reverse parking sensors
- Available with 1 Year warranty

3. Benefits

- Improved safety in bumper to bumper traffic
- Adds style and a premium feel to the car



*Rear guards are not designed to take vertical load.
Please do not stand on the guard to access the roof*



PART DESCRIPTION	PART NUMBER	APPLICABILITY
Rear Protector Kit - W601 - Stainless Steel	AW60039	All

Images for Reference, Actual part may differ from represented image

Rear Bumper Protector Design 2

1. Features

- Made from OE grade Aluminium & plastic inserts
- Formed brackets for sturdy and rigid construction

2. Advantages

- Adds to premium look to the vehicle as well as protects rear bumper
- No interference with reverse parking sensors
- Available with 1 Year warranty

3. Benefits

- Improved safety in bumper to bumper traffic
- Adds style and a premium feel to the car



*Rear guards are not designed to take vertical load.
Please do not stand on the guard to access the roof*



PART DESCRIPTION	PART NUMBER	APPLICABILITY
Rear Protector Kit - W601 – Aluminium	AW60038	All

Rear Bumper Protector Design 3



*Rear guards are not designed to take vertical load.
Please do not stand on the guard to access the roof*



PART DESCRIPTION	PART NUMBER	APPLICABILITY
Rear Bumper Protector Kit – W601	AW60024	All

Anti Theft Wheel Bolt

1. Features

- Wheel Bolt with special profile (One bolt per wheel)
- Profile cut key for secure removal and fitting
- Set of 4 bolts with key
- Key profile unique with every set

2. Advantages

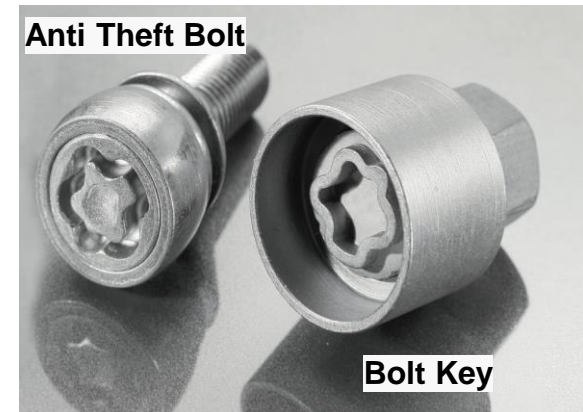
- Secures wheels and deters theft
- Simple, easy to use key for quick fastening

3. Benefits

- Deters theft due to profiled groove
- Prevents unauthorized removal of wheels



Anti Theft Bolt



PART DESCRIPTION	PART NUMBER	APPLICABILITY
Anti Theft Wheel Bolts Kit - W601	AW60037	All

Alloy Wheels

18 Inch Grey



17 Inch Grey



17 Inch Black



1. Features

- Upgrade your vehicle with your choice of OE alloy wheel
- 18 Inch Grey Sparkle, 17 Inch Grey Sparkle & 17 Inch Piano Black

2. Benefits

- Certified High-Quality Alloy
- Tested & validated for XUV700



Grey Hubcap



Piano Black Hubcap

Tyre change required for 18 inch alloy fitment in MX, AX3 & AX5

PART DESCRIPTION	PART NUMBER	Applicability
Grey Sparkle Diamond cut Alloy Wheel - 45.72 cm	AW60059	MX, AX3, AX5
Grey Sparkle Diamond cut Alloy Wheel - 43.18 cm	AW60057	MX, AX3
Piano Black Diamond cut Alloy Wheel - 43.18 cm	AW60058	MX, AX3
Hub Cap - Grey Sparkle – (2302CW603160N/003)	AW60085	AW60059, AW60057
Hub Cap - Piano Black – XUV700	AW60086	AW60058

Wheel Cover



1. Features

- Upgrade your vehicle with OE 17-inch Wheel Cover

2. Benefits

- Direct Fit, same as AX3 variant

PART DESCRIPTION	PART NUMBER	Applicability
Wheel Cover – XUV700	AW60094	MX

Body Covers



Silver Body Cover



Premium Body Cover



Sporty Body Cover

1. Features

- Silver, Premium & Dual colour options
- Durable
- Luxurious Appearance
- Odor free
- No Maintenance

2. Advantages

- Easy to use
- Customized design
- UV Resistance
- Water Resistance
- Warranty Support – 1 year

3. Benefits

- Convenient to use
- Keep Dust & Dirt off your Car Exterior
- Help to Protect car paint and finish

4 Technical Specification – NA

Sr. No	Particular	Premium	Sporty	Silver
1	Material	Spun bond	Non-Woven	Taffeta
2	GSM	83	85	60
4	Water Resistant	100%	100%	70%
5	UV Resistant	YES	YES	YES
7	Colour	White	Black & Blue	Silver
8	Touch and Feel	Soft and Smooth	HARD	Soft
9	Scratch Resistant	YES	NO	Yes

PART DESCRIPTION	PART NUMBER
Silver Body Cover - XUV700	AW60046
Premium Body Cover - XUV700	AW60047
Sporty Body Cover - XUV700	AW60062

Perforated Design Seat Cover Set



1. Features

- All Weather bacteria resistant seat cover for long lasting life
- High Foam thickness for a comfortable drive
- Perforated Design

2. Advantages

- High-Quality dry feel PU Material
- Perfectly matches with OE seat's profiles with bucket fitting

3. Benefits

- Protects seats from UV damage & prevents color & grain fade
- Protect the seats from liquid spillage or dust deposition
- Dustproof & odor free material, Easy to clean & maintain

4. Applicability

- MX, AX3, AX5 variant only (Not to be fitted on seats with Airbags)

PART DESCRIPTION

PART NUMBER

APPLICABILITY

Seat Cover Set - Grey Perforated - W601 - 5 Seater

AW60031

5 Seater - MX, AX3, AX5

Seat Cover Set - Grey Perforated - W601 - 7 Seater

AW60032

7 Seater - MX, AX3, AX5

Perforated Design Seat Cover & Comfort Kit



Neck Rest



Seat Belt Cushion



Gear Cover



Cushion



Top



Bottom

Steering Cover

1. Features

- Comfort Kit includes 2 Cushions, 2 Neck rests, 2 Seatbelt pads, Steering Cover, Gearboot cover
- All Weather bacteria resistant material

2. Advantages

- High-Quality dry feel PU Material
- Perfectly matches with OE and accessory seat covers

3. Benefits

- Dustproof & odor free material, Easy to clean & maintain

4. Applicability

- As per below table

PART DESCRIPTION	PART NUMBER	APPLICABILITY
Seat Cover Set - Grey Perforated - W601 - 5 Seater	AW60031	5 Seater - MX, AX3, AX5
Seat Cover Set - Grey Perforated - W601 - 7 Seater	AW60032	7 Seater - MX, AX3, AX5
Comfort Kit - Grey Perforated	AW60077	All Variants

Deco Stitch Seat Cover Set

1. Features

- All Weather bacteria resistant seat cover for long lasting life
- High Foam thickness for a comfortable drive
- Premium decorative contrast stitch pattern

2. Advantages

- High-Quality dry feel PU Material
- Perfectly matches with OE seat's profiles with bucket fitting

3. Benefits

- Protects seats from UV damage & prevents color & grain fade
- Protect the seats from liquid spillage or dust deposition
- Dustproof & odor free material, Easy to clean & maintain

4. Applicability

- MX, AX3, AX5 variant only (Not to be fitted on seats with Airbags)



PART DESCRIPTION	PART NUMBER	APPLICABILITY
Seat Cover Set - Deco Stitch - W601 - 5 Seater	AW60033	5 Seater - MX, AX3, AX5
Seat Cover Set - Deco Stitch - W601 - 7 Seater	AW60034	7 Seater - MX, AX3, AX5

Deco Stitch Seat Cover & Comfort Kit



1. Features

- Comfort Kit includes 2 Cushions, 2 Neck rests, 2 Seatbelt pads, Steering Cover, Gearboot cover
- All Weather bacteria resistant material

2. Advantages

- High-Quality dry feel PU Material
- Perfectly matches with OE and accessory seat covers

3. Benefits

- Dustproof & odor free material, Easy to clean & maintain

4. Applicability

- As per below table

PART DESCRIPTION	PART NUMBER	APPLICABILITY
Seat Cover Set - Deco Stitch - W601 - 5 Seater	AW60033	5 Seater - MX, AX3, AX5
Seat Cover Set - Deco Stitch - W601 - 7 Seater	AW60034	7 Seater - MX, AX3, AX5
Comfort Kit - Deco Stitch	AW60078	All Variants

Embossed Seat Cover Set



1. Features

- All Weather bacteria resistant seat cover for long lasting life
- High Foam thickness for a comfortable drive
- Premium embossed & perforated design

2. Advantages

- High-Quality dry feel PU Material
- Perfectly matches with OE seat's profiles with bucket fitting

3. Benefits

- Protects seats from UV damage & prevents color & grain fade
- Protect the seats from liquid spillage or dust deposition
- Dustproof & odor free material, Easy to clean & maintain

4. Applicability

- MX, AX3, AX5 variant only (Not to be fitted on seats with Airbags)

PART DESCRIPTION	PART NUMBER	APPLICABILITY
Seat Cover Set - Embossed Design – W601 - 5 Seater	AW60035	5 Seater - MX, AX3, AX5
Seat Cover Set - Embossed Design – W601 - 7 Seater	AW60036	7 Seater - MX, AX3, AX5

Embossed Seat Cover & Comfort Kit



1. Features

- Comfort Kit includes 2 Cushions, 2 Neck rests, 2 Seatbelt pads, Steering Cover, Gearboot cover
- All Weather bacteria resistant material

2. Advantages

- High-Quality dry feel PU Material
- Perfectly matches with OE and accessory seat covers

3. Benefits

- Dustproof & odor free material, Easy to clean & maintain

4. Applicability

- As per below table

PART DESCRIPTION	PART NUMBER	APPLICABILITY
Seat Cover Set - Embossed Design – W601 - 5 Seater	AW60035	5 Seater - MX, AX3, AX5
Seat Cover Set - Embossed Design – W601 - 7 Seater	AW60036	7 Seater - MX, AX3, AX5
Comfort Kit - Embossed Design	AW60079	All Variants

Floor Mats



Carpet Mat



Designer Mat



3D Mat



7D

Types of Mats for XUV700

- Carpet
 - Designer
 - 3D
 - 7D
- } Available for Manual, Automatic, 7S & 5S variants

3D Boot mat for 5 - Seater



5 Seater Boot mat

Carpet Mat set – 7S



Mat Set shown for 7 Seater Manual

1. Features

- Superior grip and long-lasting material
- Unique design with vehicle branding
- Positive locking clips prevent driver mat movement
- Separate sets for Manual, Automatic, 7S & 5S variants

2. Advantages

- Easy to fit & remove
- Easy to Clean Prevents wear & tear of original carpet
- Automotive grade carpet material with rugged heelpad

3. Benefits

- Perfect matching with vehicle floor
- Specially designed driver side mat to avoid fouling with A-B-C pedal

PART DESCRIPTION	PART NUMBER	APPLICABILITY
Printed Carpet Mat Set - AT - 7S	AW60073	7 seater AT
Printed Carpet Mat Set - 7 Seater	AW60030	7 seater MT

Carpet Mat set – 5S



1. Features

- Superior grip and long-lasting material
- Unique design with vehicle branding
- Positive locking clips prevent driver mat movement
- Separate sets for Manual, Automatic, 7S & 5S variants

2. Advantages

- Easy to fit & remove
- Easy to Clean Prevents wear & tear of original carpet
- Automotive grade carpet material with rugged heelpad

3. Benefits

- Perfect matching with vehicle floor
- Specially designed driver side mat to avoid fouling with A-B-C pedal

PART DESCRIPTION	PART NUMBER	APPLICABILITY
Printed Carpet Mat Set - 5 Seater	AW60029	5 seater MT
Printed Carpet Mat Set - AT - 5S	AW60072	5 seater AT
3D Boot Mat – XUV700 - 5 Seater	AW60048	5 seater AT & MT

Designer Mat – 7S



Mat Set shown for 7 Seater Manual

1. Features

- Superior grip and long-lasting material
- Unique design with vehicle branding
- Positive locking clips prevent driver mat movement
- Separate sets for Manual, Automatic, 7S & 5S variants

2. Advantages

- Easy to fit & remove
- Easy to Clean Prevents wear & tear of original carpet
- Automotive grade Plastisole material with raised borders for dust retention

3. Benefits

- Perfect matching with vehicle floor
- Specially designed driver side mat to avoid fouling with A-B-C pedal

PART DESCRIPTION	PART NUMBER	APPLICABILITY
Designer Mat Set - W601 - AT - 7S	AW60071	7 seater AT
Designer Mat Set – W601 - 7 Seater	AW60028	7 seater MT

Designer Mat – 5S



5 Seater Designer mat set



3D Boot Mat
AW60048

1. Features

- Superior grip and long-lasting material
- Unique design with vehicle branding
- Positive locking clips prevent driver mat movement
- Separate sets for Manual, Automatic, 7S & 5S variants

2. Advantages

- Easy to fit & remove
- Easy to Clean Prevents wear & tear of original carpet
- Automotive grade Plastisole material with raised borders for dust retention

3. Benefits

- Perfect matching with vehicle floor
- Specially designed driver side mat to avoid fouling with A-B-C pedal

PART DESCRIPTION	PART NUMBER	APPLICABILITY
Designer Mat Set – W601 - 5 Seater	AW60027	5 seater MT
Designer Mat Set - W601 - AT - 5S	AW60070	5 seater AT
3D Boot Mat – XUV700 - 5 Seater	AW60048	5 seater AT & MT

3D Floor Mat – 7S



3D Mat



Mat Set shown for 7 Seater Manual

1. Features

- Superior grip and long-lasting material
- Unique design with vehicle branding
- Positive locking clips prevent driver mat movement
- Separate sets for Manual, Automatic, 7S & 5S variants

2. Advantages

- Easy to fit & remove
- Easy to Clean Prevents wear & tear of original carpet
- Automotive grade TPU material with tray structure for dust retention

3. Benefits

- Perfect matching with vehicle floor
- Specially designed driver side mat to avoid fouling with A-B-C pedal

PART DESCRIPTION	PART NUMBER	APPLICABILITY
3D Mat Set – 7 Seater	AW60026	7 seater MT
3D Mat Set - AT - 7S	AW60069	7 seater AT

3D Floor Mat – 5S



3D Mat



5 Seater 3D mat set



3D Boot Mat
AW60048

1. Features

- Superior grip and long-lasting material
- Unique design with vehicle branding
- Positive locking clips prevent driver mat movement
- Separate sets for Manual, Automatic, 7S & 5S variants

2. Advantages

- Easy to fit & remove
- Easy to Clean Prevents wear & tear of original carpet
- Automotive grade TPU material with tray structure for dust retention

3. Benefits

- Perfect matching with vehicle floor
- Specially designed driver side mat to avoid fouling with A-B-C pedal

PART DESCRIPTION	PART NUMBER	APPLICABILITY
3D Mat Set – 5 Seater	AW60025	5 seater MT
3D Mat Set - AT - 5S	AW60068	5 seater AT
3D Boot Mat – XUV700 - 5 Seater	AW60048	5 seater AT & MT

7D Mat set – 7S



Mat Set shown for 7 Seater Manual

1. Features

- Superior grip and long-lasting material
- Unique design with vehicle branding
- Positive locking clips prevent driver mat movement
- Separate sets for Manual, Automatic, 7S & 5S variants

2. Advantages

- Easy to fit & remove
- Easy to Clean Prevents wear & tear of original carpet
- Automotive grade carpet material with rugged heelpad

3. Benefits

- Perfect matching with vehicle floor
- Specially designed driver side mat to avoid fouling with A-B-C pedal

PART DESCRIPTION	PART NUMBER	APPLICABILITY
7D Mat Set – XUV700 - 7 Seater	AW60061	7S MT
7D Mat Set – XUV700 - AT - 7S	AW60075	7S AT

7D Mat set – 5S



5 Seater 7D mat set



3D Boot Mat
AW60048

1. Features

- Superior grip and long-lasting material
- Unique design with vehicle branding
- Positive locking clips prevent driver mat movement
- Separate sets for Manual, Automatic, 7S & 5S variants

2. Advantages

- Easy to fit & remove
- Easy to Clean Prevents wear & tear of original carpet
- Automotive grade carpet material with rugged heelpad

3. Benefits

- Perfect matching with vehicle floor
- Specially designed driver side mat to avoid fouling with A-B-C pedal

PART DESCRIPTION	PART NUMBER	APPLICABILITY
7D Mat Set – XUV700 - 5 Seater	AW60060	5S MT
7D Mat Set – XUV700 - AT - 5S	AW60074	7S AT
3D Boot Mat – XUV700 - 5 Seater	AW60048	5 seater AT & MT

3D Boot Mat



1. Features

- Superior grip and long-lasting material
- Unique design with vehicle branding

2. Advantages

- Easy to fit & remove
- Easy to Clean Prevents wear & tear of original carpet
- Automotive grade TPU material with tray structure for dust retention

3. Benefits

- Perfect matching with vehicle floor

PART DESCRIPTION	PART NUMBER	APPLICABILITY
3D Boot Mat – XUV700 - 5 Seater	AW60048	5 seater only

Images for Reference, Actual part may differ from represented image

Illuminated Scuff Protector



1. Features

- Built with automotive grade material
- Back lit vehicle branding
- OE scuff replacement, no cutting or trimming needed

2. Advantages

- Easy to fit & Remove
- Lend aesthetic appeal with protection to your vehicle
- Connector fitment for higher reliability

3. Benefits

- Protect vehicle door & scuff area from scratches

PART DESCRIPTION	PART NUMBER
Illuminated Scuff Protector Set	AW60017

SS Scuff Protector Theme 1



1. Features

- Built with automotive grade SS
- Vehicle branding with sandblasted pattern

2. Advantages

- Easy to fit & Remove
- Lend aesthetic appeal with protection to your vehicle

3. Benefits

- Protect vehicle door & scuff area from scratches

PART DESCRIPTION	PART NUMBER
Scuff Protector Set Theme 1	AW60018

SS Scuff Protector Theme 2



1. Features

- Built with automotive grade SS
- Vehicle branding with sandblasted pattern

2. Advantages

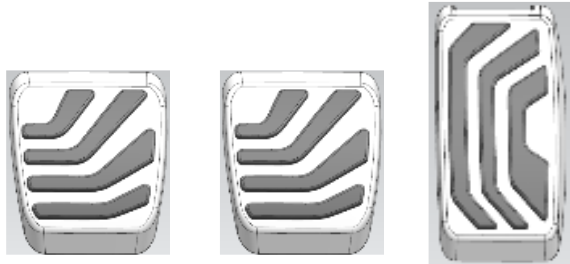
- Easy to fit & Remove
- Lend aesthetic appeal with protection to your vehicle

3. Benefits

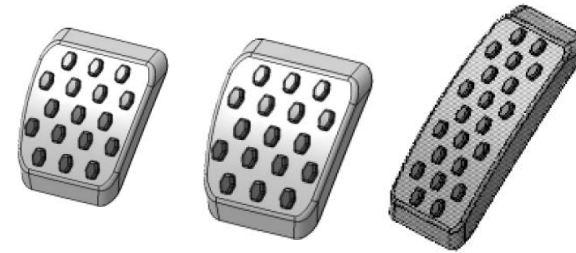
- Protect vehicle door & scuff area from scratches

PART DESCRIPTION	PART NUMBER
Scuff Protector Set Theme 2	AW60019

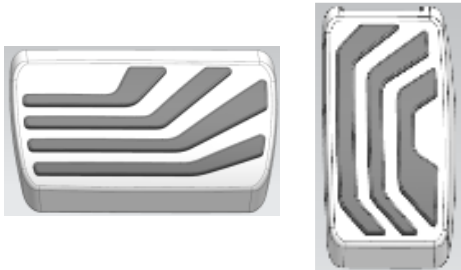
Line Design - MT



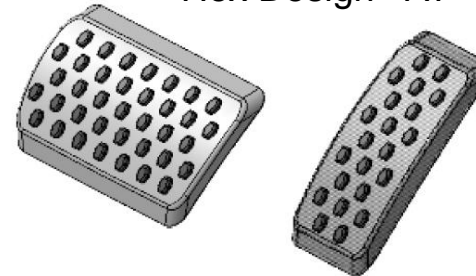
Hex Design - MT



Line Design - AT



Hex Design - AT



1. Features

- Simple snap on for installation, no fasteners needed
- Made from high quality materials designed to endure long drives year after year
- Replaces OE rubber pedal with sporty look

2. Advantages

- Simple snap on for installation, no fasteners needed
- Perfectly matches with OE pedals

3. Benefits

- Adds style and comfort to your OE pedals

4. Applicability

- As per table

PART DESCRIPTION	PART NUMBER	APPLICABILITY
Pedal Cover Set – XUV700 MT – Hex Pattern	AW60042	MT
Pedal Cover Set – XUV700 AT – Hex Pattern	AW60043	AT
Pedal Cover Set – XUV700 MT – Line Design	AW60044	MT
Pedal Cover Set – XUV700 AT – Line Design	AW60045	AT

OE Fog lamp set

1. Features

- OE foglamp set for upgrading base variants
- Provides OE mid variant foglamp function
- No wire cutting or modification to existing trims

2. Advantages

- OE parts kit with necessary wiring harness
- Designed & Tested for XUV700

3. Benefits

- Upgrade your XUV700 to higher level features
- Direct connector fitment for higher reliability
- Peace of mind



Only foglamp function provided, top variant foglamp features not compatible for MX

PART DESCRIPTION	PART NUMBER	APPLICABILITY
Fog Lamp Set – XUV700	AW60087	MX
Wiring Harness – XUV700 - Fog Lamp	AW60054	AW60087
Wiring Harness – XUV700 - Splitter	AW60053	For installing more than one Elec. Accessory

1. Features

- Projects logo on the ground when the door is opened
- Automotive grade LED for consistent performance

2. Advantages

- Concealed LED module
- Direct connector fitment

3. Benefits

- Higher reliability with included wiring harness
- Plug and play product
- Concealed LED module and wire routing for a clean look



PART DESCRIPTION	PART NUMBER	APPLICABILITY
Logo Projector Lamp Set - XUV700	AW60064	All variants

*Images for Reference, Actual part may differ from represented image
Door trim bottom to be drilled for fitting logo projector lamp*

1. Features

- 6000K Pure white light
- Upto 160% more brightness than Halogen bulbs

2. Advantages

- Easy to fit plug-n-play method
- Tested for XUV700 headlamps as replacement for Halogen bulbs

3. Benefits

- Increased safety with brighter illumination

4 Technical Specification –

- Type – H7
- Power - 14±15% W
- Luminous flux - 1100±20% lm (30mins)
- Temperature range °C - 40~85

Also applicable for XUV500, Scorpio and Marazzo



PART DESCRIPTION	PART NUMBER	APPLICABILITY
LED Car Headlight Bulb - H7 – Lumileds	AW60076	MX, AX3

Auto Headlamp kit

1. Features

- Switches on headlamps when ambient light is low

2. Advantages

- Auto operation of headlamps
- Automotive grade components for higher reliability
- Plug and play product with direct connector fitment

3. Benefits

- Higher reliability with included wiring harness
- Promotes driver safety



PART DESCRIPTION	PART NUMBER	APPLICABILITY
Automatic Headlamp Kit - XUV700	AW60066	MX, AX3, AX5

Shark Fin Antenna

1. Features

- OE Sharkfin antenna for upgrading base variants
- Replaces OE Stub antenna in MX
- No wire cutting or modification to existing harness

2. Advantages

- OE parts kit with necessary wiring harness
- Designed & Tested for XUV700

3. Benefits

- Upgrade your XUV700 to higher level features
- Direct connector fitment for higher reliability
- Peace of mind



Available in White, Black, Silver & Red colour only

PART DESCRIPTION	PART NUMBER	APPLICABILITY
Shark Fin Antenna – Everest White - XUV700	AW60088	MX
Shark Fin Antenna – Midnight Black - XUV700	AW60089	MX
Shark Fin Antenna – Dazzling Silver - XUV700	AW60090	MX
Shark Fin Antenna – Red Rage - XUV700	AW60091	MX
Wiring Harness – XUV700 - Shark Fin Antenna	AW60055	MX
Wiring Harness – XUV700 - Splitter	AW60053	For installing more than one Elec. Accessory

Reverse Camera



1. Features

- High quality video output on Infotainment screen while reversing
- Static Guidelines to aid parking

2. Advantages

- Compact size & easy installation
- Quick to activate with low light compensation

3. Benefits

- Promotes safety of vehicle and driver
- 1 year warranty against manufacturing defects only

PART DESCRIPTION	PART NUMBER	APPLICABILITY
Reverse Parking Camera Kit - XUV700	AW60065	MX, AX3, AX5
Wiring Harness – XUV700 - Splitter	AW60053	For installing more than one Elec. Accessory`

Images for Reference, Actual part may differ from represented image

1. Features

- OE Wireless Charger for upgrading base & mid variants
- Provides OE wireless charging function
- No wire cutting or modification to existing trims

2. Advantages

- OE parts kit with necessary wiring harness
- Designed & Tested for XUV700

3. Benefits

- Upgrade your XUV700 to higher level features
- Direct connector fitment for higher reliability
- Peace of mind



PART DESCRIPTION	PART NUMBER	APPLICABILITY
Wireless Charger Module - W601	AW60002	MX, AX3, AX5, AX7C
Wiring Harness – XUV700 - Wireless Charger	AW60056	AW60002
Wiring Harness – XUV700 - Splitter	AW60053	For installing more than one Elec. Accessory`

Sun Shades

1. Features

- Beat the heat with fine polyester sun shades
- Set of 4 pcs for first and second row
- Mahindra branding on each shade
- Spring steel wires with clip mounting

2. Advantages

- Easy to clean
- Premium and comfortable for use on every drive

3. Benefits

- Perfect matching with vehicle interior
- Create a comfortable atmosphere in the car
- 1 year warranty against manufacturing defects only



PART DESCRIPTION	PART NUMBER
Sun Shade Set - XUV700	AW60063

Infotainment Screen Protector



1. Features

- 0.3 mm thickness - Ultra thin film
- Does not affect the sensitivity, smoothness and touch
- Scratch resistant
- Non Smudging surface

2. Advantages

- Easy to clean
- Strong adhesive for easy application

3. Benefits

- Protects infotainment screen from scratches
- Increases the life of your infotainment screen by making it resistant to scratches and easy to clean



PART DESCRIPTION	PART NUMBER	APPLICABILITY
Screen Protector Film - XUV700	AW60095	All

Luggage Cover



1. Features

- Retractable luggage cover
- Locks in the space provided in XUV700 boot interior

2. Advantages

- Covers the luggage area with easy to retract screen

3. Benefits

- Protects luggage from roving eyes

PART DESCRIPTION	PART NUMBER	APPLICABILITY
Luggage Cover - XUV700	AW60096	All (3 rd row to be folded for 7 Seater)

1. Features

- Built with Auto grade ABS material with 40 Micron Satin Chrome finish
- Perfectly matches the vehicle profile

2. Advantages

- Gives premium look to the vehicle
- Rust resistant
- Available with 1 Year warranty

3. Benefits

- Accentuates the bold lines of the car
- Makes your car stand out from the crowd

4. Technical Specification

- High Quality ABS Material with 40 micron satin chrome plating
- Double sided 3M Tape of grade PT Series

5. Applicability: As per table



PART DESCRIPTION	PART NUMBER	APPLICABILITY
Headlamp Applique Set (4 pc)	AW60006	All



1. Features

- Built with Auto grade ABS material with 40 Micron Satin Chrome finish
- Perfectly matches the vehicle profile

2. Advantages

- Gives premium look to the vehicle
- Rust resistant
- Available with 1 Year warranty
- Keeps bugs/insects and dust away from windshield by deflecting them.

3. Benefits

- Accentuates the bold lines of the car
- Makes your car stand out from the crowd

4. Technical Specification

- High Quality ABS Material with 40 micron satin chrome plating
- Double sided 3M Tape of grade PT Series

5. Applicability: As per table

PART DESCRIPTION	PART NUMBER	APPLICABILITY
Bug Deflector	AW60007	All

Bumper Corner Protector

1. Features

- Built with Auto grade ABS material with 40 Micron Satin Chrome finish
- Perfectly matches the vehicle profile

2. Advantages

- Gives premium look to the vehicle
- Rust resistant
- Available with 1 Year warranty

3. Benefits

- Accentuates the bold lines of the car
- Makes your car stand out from the crowd

4. Technical Specification

- High Quality ABS Material with 40 micron satin chrome plating
- Double sided 3M Tape of grade PT Series

5. Applicability: As per table



PART DESCRIPTION	PART NUMBER	APPLICABILITY
Bumper Corner Protector Set (4 pc)	AW60008	All

Actual part may differ from represented image

Window Surround applique



1. Features

- Built with Auto grade ABS material with 40 Micron Satin Chrome finish
- Perfectly matches the vehicle profile
- Available as full set for MX, AX3 & only Top line chrome for AX7

2. Advantages

- Gives premium look to the vehicle
- Rust resistant
- Available with 1 Year warranty

3. Benefits

- Accentuates the bold lines of the car
- Makes your car stand out from the crowd

4. Technical Specification

- High Quality ABS Material with 40 micron satin chrome plating
- Double sided 3M Tape of grade PT Series

5. Applicability: As per table

PART DESCRIPTION	PART NUMBER	APPLICABILITY
Window Full Surround Applique Set (16 pc)	AW60012	MX, AX3, AX5
Window Top Surround Applique Set (8 pc)	AW60080	AX7

Actual part may differ from represented image

Rain Visor with Chrome

1. Features

- Built with Auto grade ABS material with 40 Micron Satin Chrome finish
- Perfectly matches the vehicle profile

2. Advantages

- Gives premium look to the vehicle with min effort
- Rust resistant
- Available with 1 Year warranty

3. Benefits

- Accentuates the bold lines of the car
- Allows partial opening of windows during rains

4. Technical Specification

- High Quality ABS Material with 40 micron satin chrome plating
- Double sided 3M Tape of grade PT Series

5. Applicability: As per table



PART DESCRIPTION	PART NUMBER	APPLICABILITY
Rain Visor + Window Surround Set (16 pc)	AW60081	MX, AX3, AX5
Rain Visor with Chrome Insert Set (6 pc)	AW60013	All

Tailgate Scuff Protector



1. Features

- Built with Auto grade ABS material with 40 Micron Satin Chrome finish
- Perfectly matches the vehicle profile

2. Advantages

- Gives premium look to the vehicle with min effort
- Rust resistant
- Available with 1 Year warranty

3. Benefits

- Accentuates the bold lines of the car
- Makes your car stand out from the crowd

4. Technical Specification

- High Quality ABS Material with 40 micron satin chrome plating
- Double sided 3M Tape of grade PT Series

PART DESCRIPTION	PART NUMBER	APPLICABILITY
Tailgate Scuff Protector (Satin Chrome)	AW60015	All

Thank you

Visit us at www.mahindra.com

Disclaimer

Mahindra & Mahindra herein referred to as M&M, and its subsidiary companies provide a wide array of presentations and reports, with the contributions of various professionals. These presentations and reports are for informational purposes and private circulation only and do not constitute an offer to buy or sell any securities mentioned therein. They do not purport to be a complete description of the markets conditions or developments referred to in the material. While utmost care has been taken in preparing the above, we claim no responsibility for their accuracy. We shall not be liable for any direct or indirect losses arising from the use thereof and the viewers are requested to use the information contained herein at their own risk. These presentations and reports should not be reproduced, re-circulated, published in any media, website or otherwise, in any form or manner, in part or as a whole, without the express consent in writing of M&M or its subsidiaries. Any unauthorized use, disclosure or public dissemination of information contained herein is prohibited. Unless specifically noted, M&M or any of its subsidiary companies is not responsible for the content of these presentations and/or the opinions of the presenters. Individual situations and local practices and standards may vary, so viewers and others utilizing information contained within a presentation are free to adopt differing standards and approaches as they see fit. You may not repackage or sell the presentation. Products and names mentioned in materials or presentations are the property of their respective owners and the mention of them does not constitute an endorsement by M&M or its subsidiary companies. Information contained in a presentation hosted or promoted by M&M is provided “as is” without warranty of any kind, either expressed or implied, including any warranty of merchantability or fitness for a particular purpose. M&M or its subsidiary companies assume no liability or responsibility for the contents of a presentation or the opinions expressed by the presenters. All expressions of opinion are subject to change without notice.

Mahindra
Rise.