

SKODA

Slavia. India's Safest Family Sedan



Introduction	04
Exterior Design	06
Crystalline Lighting	14
Interior Design	18
Performance	26
Safety	32
Infotainment, Cockpit And Connectivity	40
Comfort And Convenience	46
Storage	52
The All-New Škoda Slavia	56
Upholstery	61
Wheels	62
Colours	63
Technical Specifications	66



Introduction

Celebrating The Timeless Romance Of The Sedan

The all-new Škoda Slavia is a masterpiece derived from Škoda's rich legacy of building some of the world's most loved sedans. With an impeccable balance of space, grace and functionality, this beautiful piece of automotive excellence brings you an unmatched driving experience. Come, fall in love.



Exterior Design

Make A Stylish Statement

The all-new Škoda Slavia effortlessly blends the old-school charm of a sedan with a contemporary design language.

Turn heads wherever you go in a car that epitomizes elegance.





Front View

The all-new Škoda Slavia aces the first impression with its stunning Škoda Hexagonal Grille with Chrome Surround. The chrome highlights on the front bumper perfectly complement the mesmerizing Škoda Crystalline LED Headlamps with L-Shaped DRLs. The bold design of the front view stands out even from a distance.

Rear View

The rear of the all-new Škoda Slavia features distinctive attributes of the modern sedan. The striking Škoda Crystalline Split LED Tail Lamps and the chrome elements on the rear bumper are designed to impress. The tapered coupé form of the car effortlessly embodies its sporty DNA.



Flanked By Magnificence

The all-new Škoda Slavia is breathtaking from every angle. The R16 Ving Alloy Wheels bring alive the car's dynamism. The body colour door handles with chrome accents and the chrome window garnishes adorn the sides. Meanwhile, the Škoda Piano Black fender garnishes with chrome outlines add a sublime touch to the exterior.





Top View

Let in a little fresh air as you take a spin in your all-new Škoda Slavia. The Electric Sunroof with Anti-Pinch Technology makes every journey memorable.

Crystalline Lighting

Shine Bright

Enjoy technology that perfects your driving experience. The all-new Škoda Slavia features Auto LED Headlamps that light up when it gets darker outside.





Škoda Crystalline LED Headlamps With L-Shaped DRLs

The state-of-the-art headlamps are engineered to combine exquisite design with high-performance functionality. Even in rough weather conditions, the dependable fog lights significantly enhance visibility to help you power through, while the sleek DRLs add to the car's dynamic road presence.

Škoda Crystalline Split LED Tail Lamps

Derived from traditional Czech design, the tail lamps are powered by striking LED lights. The sharp lines and ultra-modern design of the tail lamps put the all-new Škoda Slavia stylishly ahead of others in the segment.



Interior Design

The all-new Škoda Slavia sets new benchmarks in comfort. Its Stone Beige & Black Luxe Interiors redefine dual-tone automotive aesthetics. The 20.32cm Škoda Virtual Cockpit, chrome elements, and ambient lighting add futuristic touches to the cabin.



Dashboard

Styled to perfection, the glazed dash décor with piano black accents complements the leather upholstery of the all-new Škoda Slavia.

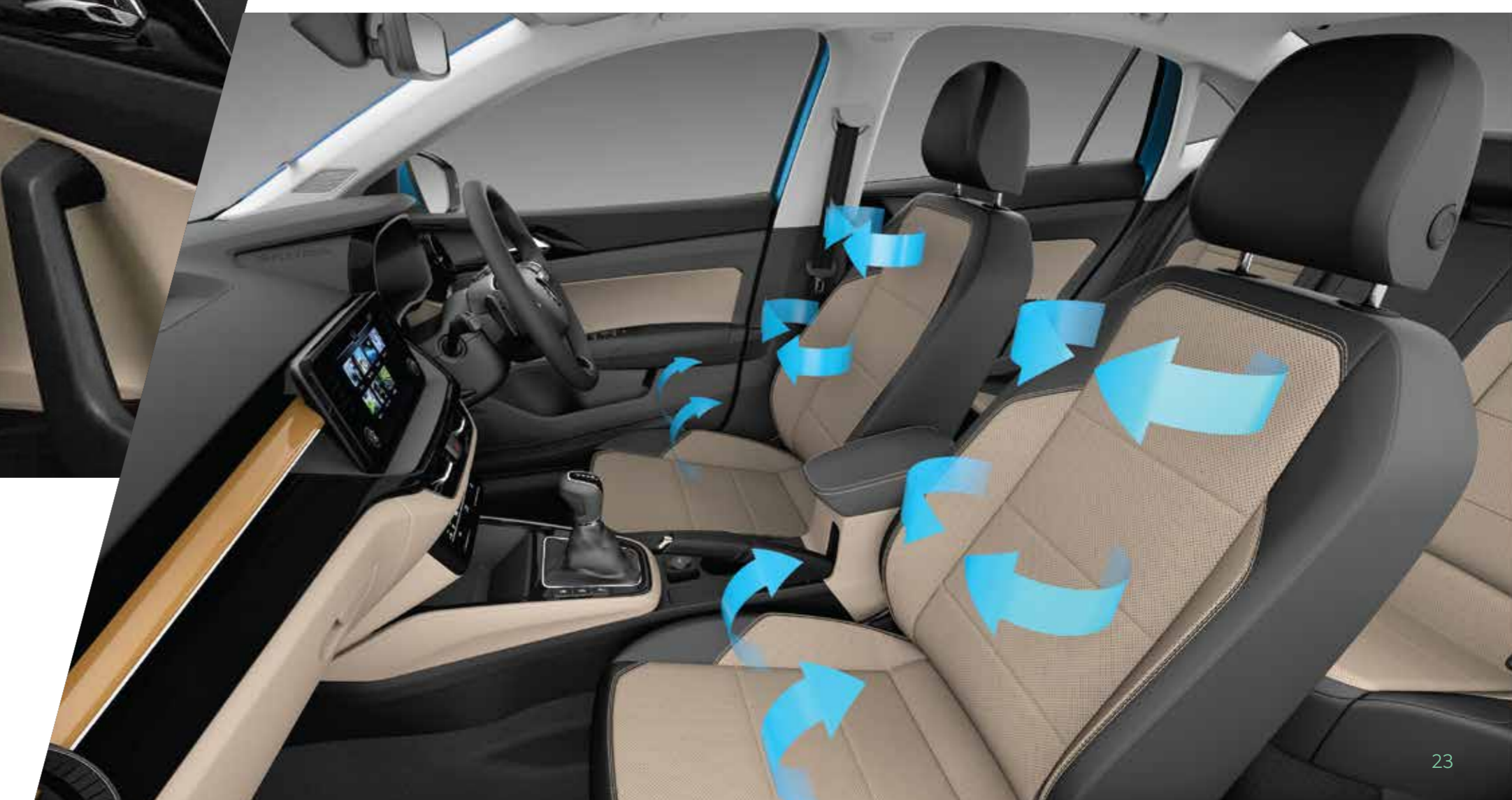
The Chrome Bezel Air Vents enhance the car's design.





All Weather Comfort

The ventilated black leather seats with perforated beige design in the front are a testament to Škoda's famed craftsmanship. The spacious interior also provides enough room for every passenger to sit back and experience automotive excellence.



Design And Functionality

Get controls for essentials like radio, music and more at your fingertips so that you can drive without taking your eyes off the road. The intuitively designed 2-spoke multi-functional steering wheel with chrome scrollers reinvents your drives.



Chrome Bezel Air Vents

Inspired by the metallic ring around the dial of a watch, the side air conditioning vents are adorned with magnificent chrome trims that stand out on the dashboard.



Ambient Lighting

The all-new Škoda Slavia's ambient lighting elevates the design of the interior while giving you the perfect lighting for every journey.

Performance

Power Meets Efficiency

Be at the wheel of brilliance with the all-new Škoda Slavia.

Its engine brings you unmatched power without compromising on efficiency. The Start & Stop Recuperation (SSR) function, which is standard across all variants, reduces CO₂ emissions and boosts its fuel efficiency. The Active Cylinder Technology (ACT) in the 1.5L 110 kW (150 PS) TSI engine is where two of the four cylinders are temporarily deactivated in order to reduce fuel consumption.

The two-cylinder shut-off takes place in an operating range that occurs frequently during normal driving. It is very environmentally friendly and yet powerful.





The all-new Škoda Slavia has 2 engine variants (1.0 TSI and 1.5 TSI) with 2 gearbox variants each. All variants have SSR and deliver efficiency with dynamism.

1.0 TSI (Turbo Stratified Injection) Engine:

The 1.0 TSI engine, with 85 kW (115 PS) and 178 Nm torque, is powerful yet efficient. It is available in both manual and automatic transmissions.

1.5 TSI (Turbo Stratified Injection) Engine:

The all-new Škoda Slavia's 1.5 TSI engine with Active Cylinder Technology (ACT) churns out 110 kW (150 PS) and 250 Nm torque which ensure exceptional acceleration for sporty drives. It is available in both manual and automatic transmissions.





Both engine variants of the all-new Škoda Slavia offer excellent transmission options for you to choose from.

Manual Transmission

Car comes equipped with 1.0 TSI and 1.5 TSI 6-Speed Manual Transmission.

Automatic Transmission

Depending on the variant of your choice, the car comes equipped with 1.0 TSI 6-speed AT and 1.5 TSI 7-speed DSG.



Safety

Your Safety Matters The Most

Packed with cutting-edge technology, the all-new Škoda Slavia keeps you safe with 6 airbags, Anti-Theft Alarm, Electronic Stability Control (ESC), Traction Control System (TCS), Multi-collision Braking (MKB), and various other safety features.



High Strength Steel Frames

The all-new Škoda Slavia has secured its position as India's safest family sedan with its robust, high-strength steel body that effectively absorbs kinetic energy, thereby minimizing the impact of any accident. Škoda's unwavering commitment to safety is evident in its exhaustive crash testing, which outperforms industry standards. The perfect integration of the car's restraint systems, such as seat belts and airbags, with its body structure, ensures unparalleled safety for families on the go.

Škoda Slavia's marvelous design and engineering represent the epitome of safety, as evidenced by its 5-star Global NCAP rating for child and adult safety.



Driver And Passenger Front Airbags

These protect you in case of front collisions. While the driver airbag is enclosed in the steering wheel, the passenger airbag is located in the dashboard.

Front Side Airbags

These airbags protect the pelvis and chest of the driver and passengers in case of a side collision.

Curtain Airbags

These two airbags shield the driver and passengers against head injury in the event of a side collision.





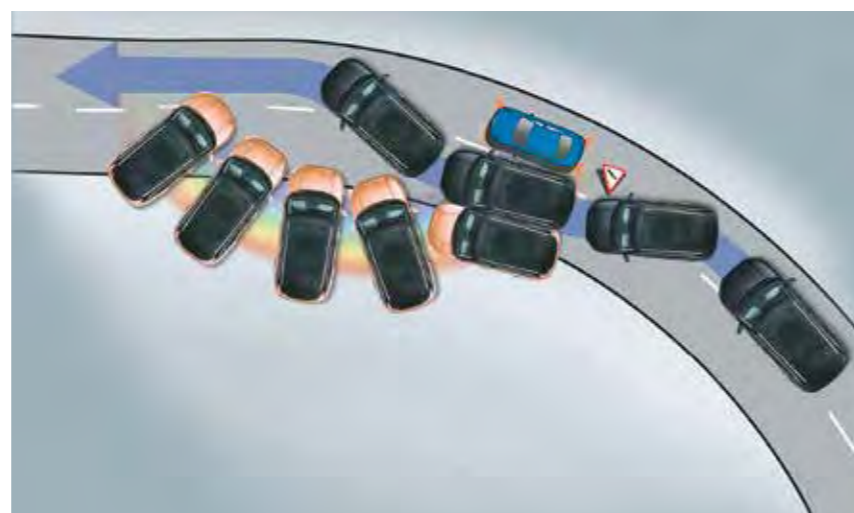
Hill Hold Control

Conquer gradients with HHC that allows a safe start uphill without using the parking brake.



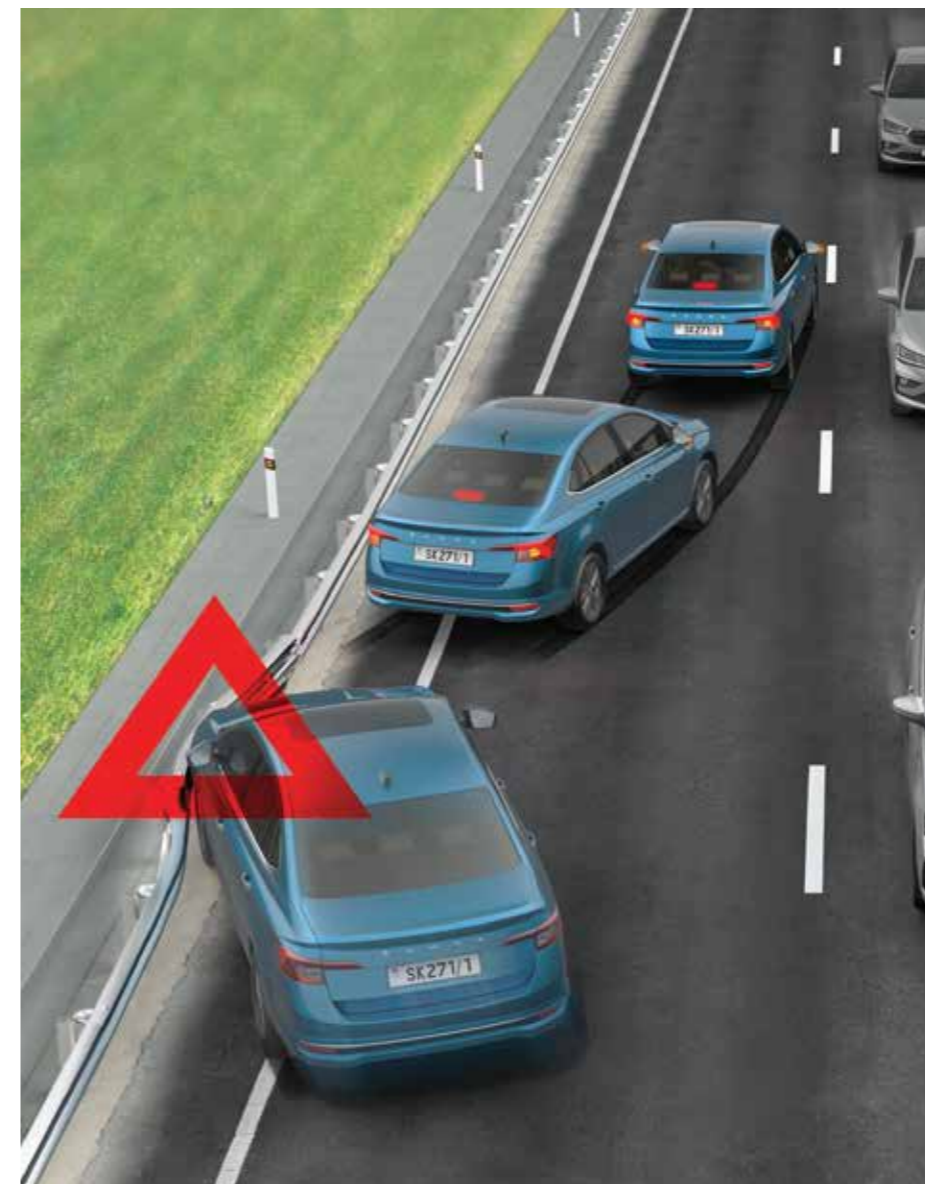
Tyre Pressure Monitoring System

Avoid unnecessary pitstops by keeping tabs on your tyres. This feature, which is standard across all variants, detects and alerts the driver to a drop in pressure in any of the 4 tyres.



Electronic Stability Control

Stay on course even in tricky situations. ESC helps to maintain directional stability and tyre traction during understeer and oversteer. This feature is standard across all variants.



Multi-collision Brake

MKB is standard across all variants. In case of an accident, it prevents further uncontrolled movement of the car to avoid more collisions.

Anti-lock Braking System

ABS helps maintain control of the vehicle during emergency braking. An ABS intervention is noticeable from the pulsating movements of the brake pedal. This feature is standard across all variants.

Electronic Differential Locking System

EDS, which is standard across all variants, helps to stabilise the vehicle when driving on road surfaces with different grip under the individual wheels. XDS+ helps to keep the vehicle on the turn by effectively braking the wheels on the inner side of the turn. XDS is functional up to 30km/h.

Motor Slip Regulation

MSR helps to maintain control of the vehicle in the event of a sudden reduction in speed. If the wheels of the driven axle lock, MSR increases the engine speed. This reduces the braking effect of the engine to prevent the wheels from slipping. This feature is standard across all variants.

Park Distance Control

Park in small spaces with ease. This system is standard across all variants and helps you factor in nearby objects to help you park safely.

Anti-theft Alarm

This function, which is standard across all variants, detects vibrations to identify invalid access to the vehicle and immediately sends you an SMS in case of an attempted breach.

Traction Control System

TCS/ASR, which is standard across all variants, helps stabilize the vehicle when driving on low-grip roads. It reduces the drive power transmitted to the wheels when they spin.

Brake Disc Wiping

The BDW feature enhances safety while driving in the rain by removing excess water from the brake to maintain a short braking distance. This feature is standard across all variants.

Infotainment, Cockpit And Connectivity

Immersive Infotainment

Liven up every trip with entertainment and information features curated for your everyday driving.





20.32cm Škoda Infotainment System

A statement piece on the dashboard, the infotainment system can be operated via touch controls. With Wired SmartLink (Apple CarPlay & Android Auto), seamlessly connect your phone to the system. Browse the menu, navigate, make calls and more with everything you need within reach.



20.32cm Škoda Virtual Cockpit

The virtual display behind the steering wheel features information like speed, distance travelled, service interval, average fuel consumption, and much more.

MyŠkoda ConnectED

Smart Connectivity



The inbuilt connectivity mobile online services can be accessed at any time via the MyŠKODA ConnectED app. The app displays a clearly laid out Vehicle Health Report on the smartphone. The system automatically stores important data every time the ignition is switched off. Remote vehicle access is also available, which allows owners to retrieve vehicle information and driving data, including the car's parking location.

Track Your Car

Keep an eye on your car's location from your home or office and stay informed when someone is driving your car.

Real-time Speed Tracking

Monitor the real-time driving speed.

Geofence Breach Notification

Add a geofence for your car and get alerts when the boundary is breached.

Roadside Assistance

Get roadside services like flat tyre repair, battery jump-start, refuelling, towing and a lot more.

Device Tampering Alert

Stay alert with prompt notifications on Device Tampering.

Driving Behaviour

Get real-time information on driving behaviour, e.g., harsh braking, sharp turns, speeding and rapid acceleration.

Walk To Car

Locate your car quickly in big parking lots or crowded areas.

Route Tracking/Deviation Alert

Live track the travel route taken by your family and get quick deviation alerts.

SOS (Emergency SMS With Location)

Long press the SOS button to send an emergency SMS to your contacts with your location.

Tow Alert

Get an alert in case your car is being towed away.

Comfort And Convenience

Every feature in the all-new Škoda Slavia is carefully engineered to cater to your exact needs. Enjoy technology that brings you comfort in its purest form in this intelligent sedan.





2-spoke Multi-functional Steering Wheel With Chrome Scrollers

The multi-functional steering wheel lets you access audio controls without any hassles via stylish chrome scrollers. The steering wheel position can also be adjusted as per the driver's requirement.



Kessy

The Keyless Entry Start & Stop System enables convenient locking and unlocking of the car.



Cruise Control

In addition to maintaining the preselected speed, cruise control enables you to increase or reduce speed without using pedals.



Adjustable Rear A/C Vents

The adjustable rear A/C vents ensure comfort for the rear passengers in the car.



12V Power Socket In Front Central Console

The power socket in the front central console helps you power devices on the go.



Climatronic Air Conditioning With Aircare Function

Climatronic automatic air conditioning with electronic regulation of cabin temperature ensures that everyone in the car experiences maximum comfort.



Wireless Charging

Charge your phone wirelessly while driving (only on selected phones).



Rear View Camera with Static Guidelines

Reverse and park safely with a rear camera.



Electric Sunroof With Anti-pinch Technology

The sunroof opens up for you to enjoy sunlight, fresh air and elevated views.



Storage

More Than Enough Space
For Everything You Love.

The all-new Škoda Slavia offers you more than just space. It has plenty of thoughtfully crafted storage options for all your travel essentials.



Luggage Capacity

A sedan owner should never settle when it comes to boot space. The all-new Škoda Slavia raises its bar with its best-in-segment storage space. With the rear seats upright, enjoy XL boot space with 521 litres capacity. You can also fold down the rear seats to open up a massive 1050 litres boot space.



Storage In Front And Rear Doors

With designated spaces for bottles by the driver and passenger seats, spillages are a worry of the past.



Cupholders In The Armrest

Designated spaces for bottles and cups in the rear of the car help keep the passengers' favourite beverages within reach.



Driver Storage Compartment

The storage compartment by the steering wheel with a card holder gives you easy access to your essentials while you drive.



Storage In The Front Centre Armrest

A place to house your devices, snacks and electronics to keep them handy.



Cooled Glove Box

Enjoy hassle-free storage space for perishables in the dashboard.

The All-New Škoda Slavia Knows You Well.

The car is packed with modern innovations that prioritize your comfort at every turn.





Smartphone Pocket

This thoughtful feature for the rear passengers allows them to store their smartphones safely.



Reflective Safety Tape On All Four Doors

Open your door safely by staying visible to other drivers even in low light conditions.



Smart Grip Bottle Holder

Designed to hold your beverages firmly in place, this feature even allows you to open your bottle with one hand.



Smartclip Ticket Holder

Placed right at the side of the windshield, the SmartClip Ticket Holder ensures that the required tickets are displayed without hassles.



Utility Recess On The Dashboard

The additional space carved out on the dashboard adds an aesthetic touch to the interior design.



Two USB-C Sockets In The Rear

Passengers in the rear seats can easily charge their devices with two USB-C sockets.



Coat Hooks

The coat hooks on the rear roof handles help you keep your outfits handy without damaging them.

Upholstery



Active

Black Fabric Melange
Woven Seats



Ambition

Black Fabric Steps
Woven Seats



Style

Ventilated Black Leather
Front Seats With
Perforated Beige Design

Wheels



Active

R15 Steel Wheels With Carme Wheel Cover



Ambition

R16 Lynx Alloy Wheels



Style

R16 Ving Alloy Wheels

Colours



Lava Blue



Crystal Blue



Tornado Red



Carbon Steel



Brilliant Silver



Candy White

*Available on select variants only.



Dual Tone Colours



Crystal Blue With Carbon Steel Roof



Brilliant Silver With Carbon Steel Roof

* Available with only Style variant.

Technical Specifications

Technical Description	1.0 TSI/85 kW		1.5 TSI/110 kW	
	MT	AT	MT	DSG
Engine type	1.0 TSI Petrol, in-line, 4 Stroke Positive Ignition Direct Injection Engine		1.5 TSI Petrol, in-line, 4 Stroke Positive Ignition Direct Injection Engine with Active Cylinder Technology	
Clutch	Dry Single Plate	Hydro Dynamic Torque Converter	Dry Single Plate	Dry Double Clutch
Cylinders	3		4	
Displacement [cm ³]	999		1498	
Max. power/revs [kW(PS) at rpm]	85 (115) / 5 000-5 500		110 (150) / 5 000-6 000	
Max. torque/revs [Nm at rpm]	178 / 1 750-4 500		250 / 1 600-3 500	
Fuel consumption - rule 115 of CMVR [kmp]	20.32	18.73	19.00	19.36
Transmission				
Wheel drive	Front Wheel Drive			
Transmission	6 Speed	6 Speed	6 Speed	7 Speed
Chassis				
Front axle	McPherson suspension with lower triangular links and stabiliser bar			
Rear axle	Twist Beam Axle			
Braking system	Hydraulic Diagonal Split Vacuum Assisted Braking System			
Brake – front	Disc			
Brake – rear	Drum			
Steering system	Electro-Mechanical Steering (Power Assisted)			
Wheels	Steel wheel 6J x 15" (Active), Alloy wheel 6J x 16" (Ambition), Alloy wheel 6J x 16" (Style/Style NSR)			
Tyres	195/65R15- Active, 205/55R16- Ambition, Style NSR & Style			
Outside dimensions				
Length [mm]	4 541			
Width [mm]	1 752			
Height [mm]	1 507			
Wheel base [mm]	2 651			
Ground clearance (Laden condition) [mm]	145			
Ground clearance (Unladen condition) [mm]	179			
Inside dimensions				
Storage capacity [l]	521/1 050			
Weights				
Kerb weight [kg]	1 170 - 1 216	1 210-1 252	1 237-1 268	1 246-1 277
Gross weight [kg]	1 630	1 660	1 685	1 685
Liquids				
Tank capacity [l]	45			

Engine & Trim	Active	Ambition	Style	
			Non-Sunroof	With Sunroof
Optional Features				
1.0 TSI/ 85 kW (115 PS)	MT	MT/AT	MT	MT/AT
1.5 TSI/ 110 kW (150 PS)	-	MT/DSG	-	MT/DSG
Design				
Wheels				
Steel Wheels R(15) + full wheel cover, Carme	■	-	-	-
Alloy Wheels R(16), Lynx	-	■	-	-
Alloy Wheels R(16), Ving	-	-	■	■
Spare Wheel R(15)	■	■	■	-
Spare Wheel R(16)	-	-	-	■
Exterior Décors				
Door handles in body colour without chrome accents	■	-	-	-
Door handles in body colour with chrome accents	-	■	■	■
Škoda Piano Black Fender Garnish with Chrome outline	■	■	■	■
Škoda Hexagonal Grille with Chrome Surround	■	■	■	■
Chrome window garnish	-	-	■	■
Lower Rear Bumper Chrome Garnish	-	-	■	■
Front Fog lamp Chrome Garnish	-	■	■	■
Lower Rear Bumper Reflectors	■	■	■	■
Exterior Colour Coding				
Manually foldable external mirrors - Body Coloured	■	-	-	-
Electrically foldable external mirrors - Body Coloured	-	■	■	■
Electrically Adjustable external mirrors	■	■	■	■
Matte Black Plastic cover on B-Pillar	■	■	-	-
Glossy Black Plastic cover on B-Pillar	-	-	■	■
Interior Décor and Colours				
Dashboard with Grained & Piano Black décor insert	■	-	-	-
Dashboard with Piano Black & Silver décor insert	-	■	-	-
Glazed dash décor with piano black accents	-	-	■	■

*NSR - Non Sunroof Version

Equipment	Active	Ambition	Style	
			Non-Sunroof	With Sunroof
Optional Features				
Instrument Cluster Housing with Škoda inscription	■	■	■	■
Black interior door handles	■	-	-	-
Chrome décor on interior door handles	-	■	■	■
Chrome ring on gear shift knob	■	■	■	■
Chrome insert under gear shift knob	-	-	■	■
Black Plastic handbrake with Glossy Black handle button	■	■	-	-
Black Plastic handbrake with Chrome handle button	-	-	■	■
Beige Middle Console	■	■	-	-
Dual tone Black & Beige Middle Console	-	-	■	■
Glossy Black surround on side air conditioning vents	■	-	-	-
Chrome Bezel Air Vents	-	■	■	■
Chrome Air conditioning duct sliders	■	■	■	■
Safety				
llumination				
Škoda Crystalline Halogen Headlamps with LED Day time running lights	■	■	-	-
Škoda Crystalline LED Headlamps with 'L' Shaped Day time Running Lights	-	-	■	■
Škoda Crystalline LED Tail lamps with Reflective lamp	■	-	-	-
Škoda Crystalline Split LED Tail lamps	-	■	■	■
Front fog lamps	-	■	■	■
Light Assistant Auto Headlamps	-	-	■	■
Manual coming /leaving home lights	■	■	-	-
Automatic coming /leaving home lights	-	-	■	■
LED Reading Lamps - Front & Rear	■	■	■	■
Ambient Interior lighting - Dashboard & Door Handles	-	■	■	■
Rear LED Number Plate Illumination	■	■	■	■
Boot Illumination	■	■	■	■
Visibility				
Anti-glare outside rear view mirror	■	■	■	■
Automatic front wiper system with rain sensor	-	-	-	■

Equipment	Active	Ambition	Style	
			Non-Sunroof	With Sunroof
Rear Defogger	■	■	■	■
Auto dimming interior rear view mirror	-	-	-	■
Braking & Stabilizing Systems				
ESC (Electronic Stability control), ABS (Anti-lock Braking System) & EBD	■	■	■	■
MKB (Multi Collision Braking)	■	■	■	■
EDS (Electronic Differential Lock System), XDS & XDS+ (Over 30 Km/h)	■	■	■	■
TCS (Traction Control System), MSR (Motor Slip Regulation)	■	■	■	■
BDW (Brake Disc Wiping)	■	■	■	■
HHC (Hill Hold Control)	-	■	■	■
Airbags				
Driver & Passenger front airbag	■	■	■	■
Curtain Airbags	-	-	■	■
Front Side Airbags	-	-	■	■
Occupant Restraint				
Three-point seatbelts at front with Pretensioner	■	■	■	■
Three-point rear outer and centre seatbelt	■	■	■	■
Height adjustable head restraints at Front & Rear	■	■	■	■
Front Seat Belt Reminder	■	■	■	■
More				
TPMS (Tyre pressure monitoring system)	■	■	■	■
Rough road package	■	■	■	■
Child-proof rear door locking	■	■	■	■
Child-proof rear window locking	■	■	■	■
ISOFIX & Top tether points on Rear Seats	■	■	■	■
Door open indicator	■	■	■	■
Emergency triangle in luggage compartment	■	■	■	■
Dual-tone warning horn	-	■	■	■
Security				
Electronic Theft Deterrence				
Engine immobilizer with floating code system	■	■	■	■

Equipment	Active	Ambition	Style	
			Non-Sunroof	With Sunroof
Anti-Theft Alarm	■	■	■	■
Remote Operation				
Central door locking with speed sensor	■	■	■	■
KESY (Engine Start/Stop & Locking/Unlocking of Door)	-	■	■	■
Remote control with foldable key	■	■	■	■
Central locking and unlocking of doors and boot lid	■	■	■	■
Comfort				
Seats				
Rear seats split 60:40 foldable with center armrest	-	■	■	■
Height adjustment for driver seat	■	■	■	■
Height adjustment for co-driver seat	-	-	■	■
Front centre armrest with storage	-	■	■	■
Upholstery				
Black Fabric Melange Woven seats	■	-	-	-
Black Fabric Steps Woven seats	-	■	-	-
Ventilated Black Leather Front seats with perforated beige design	-	-	■	■
Black leatherette rear seats with perforated beige design	-	-	■	■
Additional Upholstery				
Front & Rear Door armrest with cushioned fabric upholstery	■	■	-	-
Front & Rear Door armrest with cushioned leatherette upholstery	-	-	■	■
Steering Wheel				
2-Spoke Multifunctional Steering wheel (PU) with chrome scroller	■	-	-	-
2-Spoke Multifunctional Steering wheel (Leather) with chrome insert & scroller	-	■	■	■
Height & Length adjustable steering wheel	■	■	■	■
Paddle Shifters	-	■ (AT Only)	-	■ (AT Only)
Infotainment & Connectivity				
17.7cm Škoda Infotainment System	■	-	-	-

Equipment	Active	Ambition	Style	
			Non-Sunroof	With Sunroof
Wired Smartlink - Apple Carplay & Android Auto via USB	■	■	■	■
20.32 cm Škoda Infotainment System	-	■	■	■
4 Front Speakers (2x Tweeter, 2x Speaker) - 100W	■	-	-	-
8 Speakers (Front 2x Tweeter, 2x Speaker & Rear 2x Tweeter, 2x Speaker) - 200W	-	■	■	■
MyŠKODA ConnectED - Inbuilt Connectivity	-	■	■	■
Climate Control				
Manual A/C	■	-	-	-
Climatronic - Auto A/C with control touch panel & Air Care function	-	■	■	■
Adjustable dual rear A/C vents	-	■	■	■
Sunroof				
Electric Sunroof with Anti-Pinch Technology	-	-	-	■
Windows				
Power Windows Front & Rear, 4x Control on Driver Side	■	■	■	■
One-touch automatic operation (Driver Side)	-	■	■	■
Bounce-back system (Driver Side)	-	■	■	■
Convenience				
Information Display				
2 dials global MFA (Gearshift indicator, multifunctional segment display Basic)	■	-	-	-
4 dials medium MFA with 3.5" TFT display MAXIDOT (Gearshift indicator, multifunctional segment display Basic Travelling time, Distance travelled, Average speed, Immediate consumption, Average consumption, Travel distance before refueling, Service Interval, Outside temperature, Clock)	-	■	■	-
20.32cm Škoda Virtual Cockpit	-	-	-	■
Electronic Driving Assistance				
Cruise Control	-	■	■	■
Rear view camera - with static guidelines	-	■	■	■
Parktronic Sensors at rear	■	■	■	■

Equipment	Active	Ambition	Style	
			Non-Sunroof	With Sunroof
More				
Start & Stop function with Recuperation	■	■	■	■
12V power socket in front centre console	■	■	■	■
2 x USB-C Type socket in front (Data & Charging)	-	■	■	■
Wireless Charging (With Selected Smartphones)	-	-	■	■
Front sun visors with vanity mirror on co-driver side	■	■	■	■
Sharkfin antenna	-	■	■	■
Four Foldable roof grab handles	■	■	■	■
Storage				
521 litres Boot space	■	■	■	■
Storage compartment in the front and rear doors	■	■	■	■
Driver Storage compartment	■	■	■	■
Bottle holders in the front & Rear doors	■	■	■	■
Cup holders - Center Rear Armrest	-	■	■	■
Storage compartment in the front centre console & centre armrest	-	■	■	■
Cooled Glove Box	-	■	■	■
Advanced Features				
Sunglass Holder in Roofliner Front	-	■	-	-
Smart Phone Pocket (Driver & Co-Driver)	-	■	■	■
SmartClip ticket holder	■	■	■	■
Two USB-C socket in rear (Charging)	-	■	■	■
Coat hook on rear roof handles	■	■	■	■
Utility Recess on the Dashboard	■	■	■	■
Reflective Tape on all four Doors	■	■	■	■
Smart Grip Mat for one hand bottle operation	■	■	■	■

Legend

- Equipment available on the marked trimline
- Equipment not available on the marked trimline

SKODA

www.skoda-auto.co.in |  Toll-free 18 00 27 00 260

Dealer:

Specifications given differ from model to model. As a part of continuous product development, Škoda always upgrades its model range with innovative features. Such features are only available in the vehicles manufactured after a particular date. Please verify the feature list with our authorised dealer. Accessories shown may not be part of standard equipment. Always insist on genuine Škoda Auto parts and accessories available at authorised sales and service centres. Information relating to colours, prices, construction, technical details and equipment was valid at the time of issuance and these are subject to changes without any prior notice. All disputes are subject to the courts in Mumbai jurisdiction only. Terms and conditions apply. ¹Škoda Warranty - 4 years/1 00 000 km; Promotional offer, additional warranty 3rd & 4th year. Škoda Assist - 4 years unlimited km. Škoda Maintenance Package - 4 years/60 000 km; Four periodic maintenance services at the interval of 15 000 km or one year (whichever comes first from the date of delivery), available at an attractive price. The features mentioned in the catalogue(brochure) are of Style variant. These images are created using computer graphics and no real car is used while creating these images.