


## More Information

# G4 REXTON

SSANGYONG



Link Copy
Pri How to read Result

---

**Model** Luxury

**Body Type** Bonnet type

**Weight** 1995kg

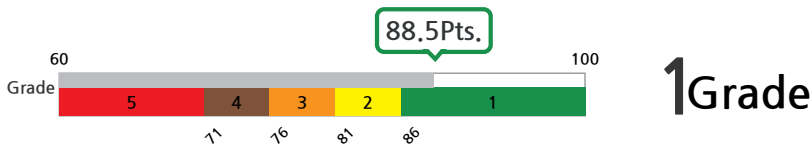
**Safety Equipment** LET 220 Diesel enging(Euro6), ESP&BAS&ARP&HDC&HSA&ESS, TPMS, seat belt reminder, airbag(driver, passenger, side, curtain, driver knee) [Smart Driving Package] FCWS, LDWS, HBA, BSD, LCA, RCTA

t

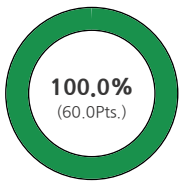
f

twitter facebook

## Overall Safety Grade

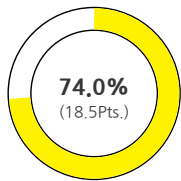


### Crash Safety



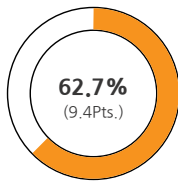
|                          |             |
|--------------------------|-------------|
| Frontal Impact (16Pts)   | 16.00       |
| Offset Frontal I (16Pts) | 15.60       |
| Side Impact (16Pts)      | 16.00       |
| 어린이안전성 (8Pts)            | 7.50        |
| whiplash (4Pts)          | 3.60        |
| 기동측면충돌(+) (2Pts)         | 2.00        |
| <b>Total (60Pts)</b>     | <b>60.0</b> |

### Pedestrian Safety



|                         |             |
|-------------------------|-------------|
| Pedestrian Safe (25Pts) | 18.50       |
| <b>Total (25Pts)</b>    | <b>18.5</b> |

### Safety Assist



|                      |            |
|----------------------|------------|
| Rollover (5Pts)      | 3.80       |
| Brake (5Pts)         | 3.50       |
| Safety Assist (5Pts) | 2.11       |
| <b>Total (15Pts)</b> | <b>9.4</b> |

### Additional Point

Safety Assist  
**+0.6Pts.**

## Impact Safety Result



### Frontal Impact

Video

Passenger : Woman (16 points)

운전자석:여성(16점)

|              |             |  |              |             |
|--------------|-------------|--|--------------|-------------|
| Head         | 6.0         |  | Head         | 6.0         |
| Chest        | 6.0         |  | Chest        | 6.0         |
| Upper Leg    | 4.0         |  | Upper Leg    | 4.0         |
| <b>Total</b> | <b>16.0</b> |  | <b>Total</b> | <b>16.0</b> |

평가점수 16.0 (100.0%)

|                                       |                     |
|---------------------------------------|---------------------|
| Door-Opening during Impact            | No Door-Opening     |
| Easiness in Door-Opening after Impact | Manual Door-Opening |
| Gas Leakage After Impact              | No Fuel Leakage     |

- Good
- Adequate
- Margnal
- Weak
- Poor



### Offset Frontal Crash

Video

전방탑승자석:남성(16점)

운전자석:남성(16점)

|              |             |  |              |             |
|--------------|-------------|--|--------------|-------------|
| Head         | 4.0         |  | Head         | 4.0         |
| Chest        | 4.0         |  | Chest        | 4.0         |
| Upper Leg    | 4.0         |  | Upper Leg    | 4.0         |
| Lower Leg    | 3.3         |  | Lower Leg    | 3.8         |
| <b>Total</b> | <b>15.3</b> |  | <b>Total</b> | <b>15.8</b> |

평가점수 15.6 (97.5%)

|                                       |                     |
|---------------------------------------|---------------------|
| Door-Opening during Impact            | No Door-Opening     |
| Easiness in Door-Opening after Impact | Manual Door-Opening |
| Gas Leakage After Impact              | No Fuel Leakage     |

- Good
- Adequate
- Margnal
- Weak
- Poor



### Side Crash

Video

Driver : (16 points)

|             |             |  |
|-------------|-------------|--|
| Head        | 4.0         |  |
| Chest       | 4.0         |  |
| Abdomen     | 4.0         |  |
| Symphysis   | 4.0         |  |
| Penalty     | 4.0         |  |
| <b>평가점수</b> | <b>16.0</b> |  |
|             | (100.0%)    |  |

|                                       |                     |
|---------------------------------------|---------------------|
| Door-Opening during Impact            | No Door-Opening     |
| Easiness in Door-Opening after Impact | Manual Door-Opening |
| Gas Leakage After Impact              | No Fuel Leakage     |



### Side Pole Crash

Video

Driver : (+2 points)

|         |     |  |
|---------|-----|--|
| Head    | 2.0 |  |
| Penalty | 0   |  |

|                                       |                     |
|---------------------------------------|---------------------|
| Door-Opening during Impact            | No Door-Opening     |
| Easiness in Door-Opening after Impact | Manual Door-Opening |

■ Poor Total 2 Gas Leakage After Impact No Fuel Leakage

### 어린이충돌 안전성(부분정면충돌) Video

전방탑승자 뒷좌석:10세(8점)      운전자 뒷좌석:6세(8점)

|       |      |  |       |     |  |
|-------|------|--|-------|-----|--|
| Head  | 4.0  |  | Head  | 4.0 | <ul style="list-style-type: none"> <li><span style="color: green;">■</span> Good</li> <li><span style="color: yellow;">■</span> Adequate</li> <li><span style="color: orange;">■</span> Margnal</li> <li><span style="color: brown;">■</span> Weak</li> <li><span style="color: red;">■</span> Poor</li> </ul> |
| 목     | 1.96 |  | 목     | 1.9 |  |
| Chest | 2.0  |  | Chest | 0   |  |
| 감점    | 0    |  | 감점    | 0   |  |
| Total | 8.0  |  | Total | 5.9 |  |

평가점수 13.9 (86.6%)

### 어린이충돌 안전성(측면충돌) Video

전방탑승자 뒷좌석:6세(8점)      운전자 뒷좌석:10세(8점)

|       |     |  |       |     |  |
|-------|-----|--|-------|-----|--|
| Head  | 4.0 |  | Head  | 4.0 | <ul style="list-style-type: none"> <li><span style="color: green;">■</span> Good</li> <li><span style="color: yellow;">■</span> Adequate</li> <li><span style="color: orange;">■</span> Margnal</li> <li><span style="color: brown;">■</span> Weak</li> <li><span style="color: red;">■</span> Poor</li> </ul> |
| 목     | 2.0 |  | 목     | 2.0 |  |
| Chest | 2.0 |  | Chest | 2.0 |  |
| Total | 8.0 |  | Total | 8.0 |  |

평가점수 16.0 (100.0%)

### whiplash Video 1   Video 2

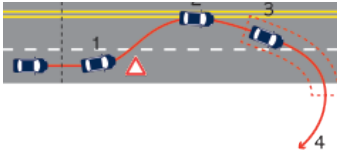
좌석안전성(4점)

| Division       | Seat Dynamic Test | 머리지지대<br>경격시험 | 머리지지대<br>잠금장치 | Score          |
|----------------|-------------------|---------------|---------------|----------------|
| Driver Seat    | 2.56              | 1.0           | 0             | 3.6            |
| Passenger Seat | 2.6               | 1.0           | 0             | 3.6            |
|                |                   |               |               | 3.6<br>(90.0%) |

## Driving Safety Result

### Rollover

Rollover Safety Score(5 points)



|                                    |            |
|------------------------------------|------------|
| Static Safety Factor(Static Test)  | 1.13       |
| Rollover Safety Test(Dynamic Test) | 바퀴들림없음     |
| Rollover Safety(ratio: %)          | 3,8(76,4%) |



**Brake**

Video 1

Video 2

|  | Braking Distance(m) | Lane Departure                |
|--|---------------------|-------------------------------|
| Dry Road   | 44.10               | No                            |
| Wet Road   | 49.93               | No                            |
| Adjusted Braking Distance<br>(wet road braking distance * 0.4) + (dry road braking distance * 0.6) | 46.4                | Brake(5점)<br>평가점수 3.5 (70.0%) |

Test Speed : 100Km/h

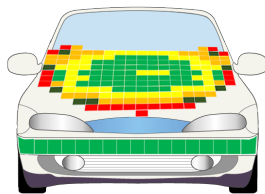
**Pedestrian Safety Result**



**Pedestrian Safety**

Video 1

- Good
- Adequate
- Margnal
- Weak
- Poor



**Pedestrian Safety(30Pts)**

|           |              |
|-----------|--------------|
| Head mode | 16.15        |
| Leg model | 6.0          |
| 평가점수      | 22.2 (74.0%) |

## Accident Prevention Safety Result

|                                  |   |             |
|----------------------------------|---|-------------|
| Forward collision warning device |    | 0.25        |
| Lane departure warning device    |    | 0.25        |
| Seatbelt warning device          |    | 0.5 ( 앞좌석 ) |
| 비상자동제동장치(고속모드)                   |    | 0.37        |
| 비상자동제동장치(시가지모드)                  |    | 0.74        |
| 조절형 최고속도제한장치                     | X   |             |
| (가점항목)비상자동제동장치(보행자모드)            |    | 0.36        |
| (가점항목)적응순항제어장치                   | X   |             |
| (가점항목)사각지대감시장치                   |    | 0.25        |
| (가점항목)차로유지지원장치                   | X   |             |
| (가점항목)지능형 최고속도제한장치               | X   |             |
| (가점항목)후측방접근경고장치                  |  | 0           |
| (가점항목)첨단에어백장치                    | X   |             |

 : 기본사양  
  : 기본사양에서 옵션으로 선택  
  : 상위사양에서 옵션으로 선택  
 X : 장치없음