



SsangYong Motor Company

12th floor, Poonglim building 823, Yeoksam-dong,
Gangnam-gu, Seoul, 135-784, Republic of Korea
Phone : 82-2-3469-2121 | Fax : 82-2-3469-2285
Official Website : www.smotor.com/en
Official Facebook  :
www.facebook.com/ssangyongglobal
Official Instagram  :
www.instagram.com/ssangyong_global

Some of the equipment shown in this brochure is optional
and may not be available on all models or in all markets.
All specifications are subject to change without notice.
Please contact your local dealer for the latest information.

The New Authentic SUV
REXTON



SYMC 201706 RHD ENGLISH Printed in KOREA

REXTON

A SOLID PERFORMER WITH CHARISMATIC FLAIR

Going all out to lead the segment

The Rexton is now safer, stronger, more spacious, and more stylish than ever. This New authentic SUV drives wonderfully, while the technology inside has reached new heights of sophistication for your convenience, enjoyment and protection.





High-intensity-discharge headlamps for better night vision; LED daytime running lights, positioning lamps and directional indicators grouped in the upper lamp housing for simplicity and elegance



Side repeater and puddle lamp mounted on the back of the outside mirror



LED cornering light function combined with fog lamp

MUSCULAR SUV WITH MAJESTIC CURVES

Retaining the SUV legacy while creating a unique style

The Rexton's shoulder-wing design of radiator grille and rugged front lines project the classic SUV look, while the dynamic character line along the sides add stately beauty. The bold yet sophisticated feel is underscored by the front bumper outlined in chrome; the black, high-gloss skid-plate; and the side repeater and puddle lamp built onto the back of the side mirror.

DYNAMIC YET SIMPLE

Displaying a distinctive look in the back

The spoiler with high-mounted auxiliary stop light highlights the Rexton's sportiness while improving safety, and the rear combination lamps are laid out horizontally to project width and a more imposing image from behind. A strip of chrome moulding crosses the tailgate center for added refinement, and the muffler has been hidden to enhance the overall simplicity of the rear design. The license plate illuminated by LED lights and the clean-sill doors provide the perfect finishing touches to the exterior.



LED rear combination lamps



Rear license plate softly illuminated by LED lights



Clean-sill door



SUMPTUOUSLY REFINED YET COZY



Brown seats

Using quality materials that set the cabin apart

The seats are ergonomically designed to conform to the shape of each body, thereby mitigating feelings of fatigue on long trips. They are covered in incredibly soft and relaxing Nappa leather that has been elegantly quilted. The interior ambience is further enhanced by the illuminated front door scuff, and lamps built into the instrument panel and door trim to create a subtle ambient light at night.

The interior package is available in four color schemes:

- Brown
- Black
- Black with beige headlining
- Ivory



Black seats



Black seats with beige headlining



Ivory seats

A PLEASURE TO DRIVE AND RIDE IN

Providing a full view of the environment outside

Four cameras have been mounted on the outside to provide a real-world view of the area on all sides of the vehicle, making low-speed driving or parking safer and easier. Moreover, the angle of the outside mirrors automatically tilts downward when the vehicle is put in reverse to assist the driver with parking.

Offering a rich infotainment environment inside

Rexton's infotainment system comes with a large (9.2") high-definition touchscreen, which supports Apple CarPlay and Google Android Auto. System features also include radio and MP3 player functions, HD digital media broadcasting, real-time broadcast recording, and a USB port.



Speed-sensing power steering & heated steering wheel cover

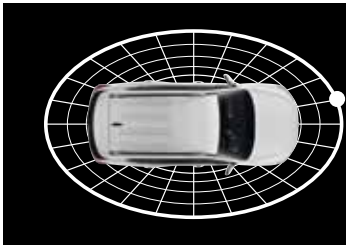


HD 9.2" Navigation system



Electronic parking brake with auto-hold function

3D AROUND-VIEW MONITORING SYSTEM



SUPER-VISION CLUSTER



7" colour TFT-LCD display

TRIPLE-MODE DIGITAL SPEEDOMETER DISPLAY



Regular mode



Animation mode



RPM-linked mode

TRIP COMPUTER DISPLAY



Turn signal sound selection



Lane departure warning system



Smart power tailgate



Navigation system assist

APPLE CARPLAY AND GOOGLE ANDROID AUTO

Users may connect their smart phone to the display to make phone calls, check messages and listen to music while on the road.

*Available on both the navigation system with 9.2" display and Smart audio system with 8" display.



SPACIOUS AND FLEXIBLE

Offering comfort and roominess to driver and passengers alike

Both seats in the first row are ventilated, while the seats in both the first and second rows are heated. Up to three different drivers can input their preferred settings for the driver's seat and mirror positions, and both seats in front are power-adjustable. Legroom in the second row is outstanding, thanks to an optimized spatial design of the interior, and the second-row seats may be double-folded to maximize cargo-carrying capacity.

SEATING CONFIGURATIONS FOR 5-SEATER

2nd row 40% flat (1,376L)



2nd row 60% flat (1,652L)



2nd row 100% flat (1,977L)



5 seater



7 seater

Folding seats to carry extra-long items

The second-row seat may also be double-folded to allow easy access to the third row.

SEATING CONFIGURATIONS FOR 7-SEATER

3rd row flat, 2nd row 40% flat (1,201L)



3rd row flat, 2nd row 60% flat (1,477L)



3rd row folded 50%, 2nd row folded flat 40% (777L)



3rd row folded 50%, 2nd row folded flat 60% (1,029L)



3rd row flat, 2nd row 100% flat (1,806L)





SMART POWER TAILGATE
 - Heavy tailgate opens and closes easily
 - Simple switch control

EASY TO LOAD AND UNLOAD

Hauling more without sacrificing passenger space

Rexton can fit four golf bags widthwise in the cargo bay, thereby leaving the 2nd-row seats free for passengers to use. The driver with arms full may open the tailgate without putting the items down. Simply keep the smart key in a pocket and stand near the back of the vehicle for just three seconds and the tailgate will pop open automatically.



2nd row folded flat 100% (5 seater)



Normal seating with luggage board raised (5 seater)



SAFER AND EASIER TO OPERATE

Employing electronics to anticipate and avoid accidents

Driving always entails a certain amount of risk. However, the Rexton takes advantage of all the latest active safety systems to minimise such risk and keep potential accidents from occurring.



Autonomous Emergency Braking (AEB)

Helps avoid or mitigate collision effects by detecting moving or stalled vehicles and warning the driver in advance.



Lane Change Assist (LCA)

Detects vehicles rapidly approaching from behind and flashes a warning light on the outside mirror, to alert the driver.



Traffic Sign Recognition (TSR)

Detects an upcoming traffic sign, applies character recognition software to read it, and relays the icon to the infotainment display.

THE LATEST TECHNOLOGICAL SOLUTIONS



Lane Departure Warning (LDW)

Warns the driver whenever the vehicle begins to move out of its lane unless the directional indicators are on in that direction.



Forward Collision Warning (FCW)

Alerts the driver when another vehicle or pedestrian appears in the path of the vehicle.



High Beam Assist (HBA)

Automatically lowers the high beams when an approaching vehicle is detected, making night-driving easier.



Blind Spot Detection (BSD)

Senses vehicles coming up in the blind spot behind or alongside and warns the driver with a flashing light on the outside mirror.



Rear Cross-Traffic Alert (RCTA)

Assists the driver when backing up by detecting the presence of vehicles approaching on either side in the rear.

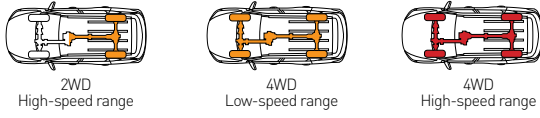
SMOOTH AND POWERFUL

Maintaining SUV authenticity with 4WD availability

The Rexton is powered by a 2.2L diesel engine and features enhanced independent rear suspension for superior handling and ride quality. Normally the vehicle runs in rear-wheel drive, which enhances handling stability by optimising weight distribution, but the driver is free to select one of two four-wheel drive modes as needed. The Rexton can also tow loads of up to three tons, the most for this class of SUV.

PART-TIME 4WD

Part-time four-wheel drive allows the driver to choose when to activate the system, depending upon changing conditions on or off the road. Operation safety and efficiency are thus superior to what by the full-time 4WD system provides.



E-Tronic 7-speed automatic transmission

INDEPENDENT MULTILINK SUSPENSION IN THE REAR

Independent suspension allows each wheel to move up, down, left, and right on its own for secure handling when the road surface gets rough. Shock from the road surface is dissipated through multiple links; little vibration is transferred to the body, and the ride quality is superb.



Max. Power
181ps/4,000rpm

Max. Torque
420Nm/1,600~2,600rpm

Displacement
2,157cc

Diesel Engine Model
e-XDi220



* With automatic transmission



SOLID AND DEPENDABLE

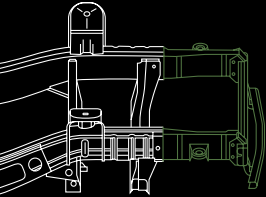


APPLYING THE MOST ADVANCED AUTOMOTIVE HIGH-STRENGTH STEEL

High-density, high-tensile-strength steel plate makes up 81.7% of all the steel plate used in the Rexton's body, providing superb rigidity and protection against deformation in a collision. As such, the safe space within the cabin has been maximised.

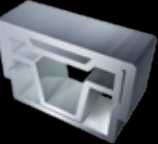
Keeping both noise and energy outside the cabin

The Rexton's body is mounted on the new-concept 'Quad Frame,' which blocks most of the noise from the road surface and engine. The frame has been engineered specifically to minimise the possibility of injury to vehicular occupants in a collision. The body has been reinforced as well with stronger materials and expanded section sizes. In addition, the Rexton now has eight body mounts, the most in its class, improving ride quality and steering stability.



CRASH ZONE BOX

The 'crash zone' refers to that part of frame that conveys the most shock from a frontal collision to the inside of the cabin. This 'box' is designed to absorb that force, thereby protecting the people inside.



QUAD FRAME

The frame members feature a quadruple-layered structure that exceeds the global standard for lateral collision safety.



MORE PROTECTION THAN EVER



Improving the safety of all occupants

The Rexton comes equipped with nine airbags, including a driver knee-airbag and second-row side airbags. The steering wheel and steering column are specially designed to absorb the force of a collision, minimising the effect on the driver's chest area, and active head restraints move forward in the event of a collision to close the gap between the occupant and the headrest to prevent whiplash.



Emergency Stop Signal (ESS)



Hill Descent Control (HDC)



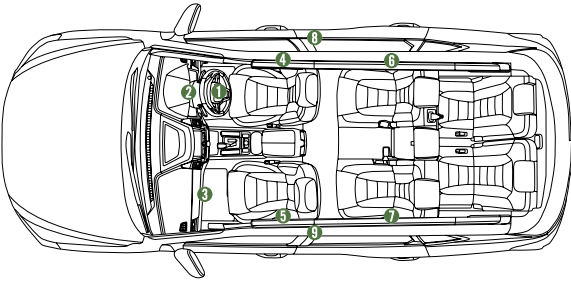
Hill Start Assist (HSA)



Electronic Stability Programme (ESP) & Anti-Rollover Protection (ARP) & Brake Assist System (BAS)

9 AIRBAGS

- 1 Driver's airbag
- 2 Driver's knee protection airbag
- 3 Passenger's airbag
- 4, 5 Driver's & passenger's side airbags
- 6, 7 Rear seat side airbags
- 8, 9 Curtain airbags



REXTON

A STANDOUT SUV

Building a proud legacy

The Rexton is a better choice, everywhere you look. The frame body is unrivalled in strength and the interior is luxurious and roomy. Towing capacity is great, while the many driving assist systems and suspension system are designed to ensure the safest and smoothest ride possible. And the list just keeps going. The SUV you would be truly proud to own.



E . X . T . E . R . I . O . R S . T . Y . L . E



Remote-controlled windows with smart key



Automatic closing system



Headlamp escort function



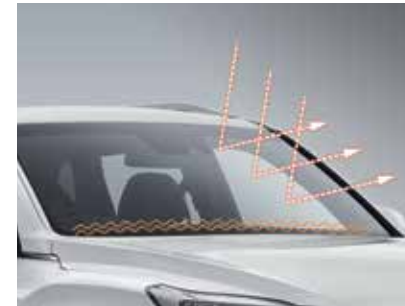
Welcome system



Safety powered window



Outside door handle lamps



Tinted, noise-control glass and wiper deicer



Fashionable roof rails



Safety-powered sunroof



Parking assist system



Tyre repair kit



Tyre pressure monitoring system

C . O . N . V . E . N . I . E . N . C . E



Cluster with 3.5" trip computer



Remote control switches and cruise control system on the steering wheel



Tilt and telescopic steering wheel system



Standard 8" smart audio



Headlamp control and automatic washer switches



Memory profile system for driver



Easy access mode



Dual-zone fully automatic air-conditioner; 3rd row air conditioner



Heated front and rear seats



Ventilated and powered front seats



Integrated switch module



smart key

C.O.N.V.E.N.I.E.N.C.E



Inside door handle lamps



Ambient lighting on the door



Overhead console



Front camera module with rain-sensing and automatic light control unit



Assist grips on the B pillar



USB port and power outlet on centre console, USB port and 220V/115V inverter in 2nd row



Centre console



1st row doors



2nd row doors



Glove box and centre console box



Luggage cover and luggage net (5 seater only)



Cargo bay pocket



1st row illuminated door scuff

C.O.L.O.U.R G.U.I.D.E

WHEELS

20" Sputtering Wheel



18" Alloy Wheel, Diamond Cut



17" Alloy Wheel



EXTERIOR COLOUR

Elemental Grey (ACY)



Atlantic Blue (BAU)



Sabia Beige (EBE)



Grand White (WAA)



Fine Silver (SAF)



Space Black (LAK)



INTERIOR COLOUR



Black

Nappa leather



Brown

Nappa leather



Black with beige headlining

Nappa leather

Nappa leather

TPU (thermoplastic polyurethane)

Flat woven



Ivory

Nappa leather

Nappa leather

TPU (thermoplastic polyurethane)

Flat woven

FEATURES LIST

MECHANICAL
e-XDi 220 2.2L diesel engine (Euro 6 emission)
6-speed manual transmission with gear shift indicator
7-speed automatic with thumbs-up switch on gearshift knob
Part-time 4WD with shifting on the fly
Double-wishbone front suspension system with coil springs
Five-link rear suspension system with coil springs
Impact-absorbing 10-link rear suspension (available with automatic transmission)
Ventilated disc brakes for front and rear
Electronic parking brake
70L fuel tank
Trailer hitch mount
Voltage stabilizer
STEERING
Hydraulic power steering
Speed-sensitive power steering
Leather steering wheel cover with silver and high-gloss black accent
Manually-controlled tilt and telescopic steering system
Steering column lock
Heated steering wheel cover
SEATS
8-way power-adjustable driver's seat
6-way power-adjustable front passenger's seat
60:40 split-folding 2 nd -row seats with folding centre armrest
50:50 split-folding 3 rd -row seats
Seat memory settings for three drivers, including seat & outside door mirror positions, stored in onboard memory
Automatic easy access mode for driver's seat
Heated seats for front and rear
Ventilated seats in front
Sliding front headrests
Premium Nappa black leather seat upholstery
Premium Nappa brown leather seat upholstery
TPU (thermoplastic polyurethane) seat upholstery
Flat woven seat upholstery
Double-folding seats in 2 nd -row

EXTERIOR
Chrome trim on radiator grille
Modulized projection headlamps
25W high-intensity discharge (HID) headlamps
High-gloss skid plate under front & rear bumpers
Outside rearview mirrors with side repeater and puddle lamp
Integrated LED front fog & cornering lamps
LED rear combination lamp with light guide
Air spoiler with LED high-mounted stop lamp
LED license plate lights
Aero-blade wipers
Body colour outside door handles with hidden key button
Clean-sill door
Invisible muffler
Fashionable black and silver roof rails
Shark antenna
Safety powered sunroof
Rear fog lamps
Daytime running lamps

INTERIOR
Woodgrain accented on centre fascia, centre console and door trim
Sunvisors with illumination and sliding extension
Glove box with lamp and key lock
Coin cup
A-pillar cloth trim
B-pillar assist grip
Stainless steel scuff on front & rear doors
Illuminated front-door scuff
Leather-wrapped gear knob for manual transmission
LED lamps in cabin
Chrome inside door handle
Ambient lights on the instrument panel and door handle
Floor mats

WHEEL AND TYRE
17" alloy wheels 235/70 tyres
18" alloy wheels 255/60 tyres (diamond cut)
20" sputtering wheels 255/50 tyres (chrome finish)
Tyre repair kit

SAFETY
Autonomous emergency braking (AEB)
Forward collision warning (FCW)
Lane departure warning (LDW)
High beam assist (HBA)
Traffic sign recognition (TSR)
Blind spot detection (BSD)
Rear cross traffic alert (RCTA)
Lane change assist (LCA)
High-strength-steel construction
Ultra-rigid Quad Frame for greater strength, less vibration and noise
Door impact beams for added protection from side collisions
4-channel anti-lock braking system
Electronic stability programme (ESP) with traction control system (TCS), hill descent control (HDC), active roll-over protection (ARP) and emergency stop signal (ESS)
Dual airbags for driver and front passenger
Side airbags for front and rear passengers
Curtain airbags for front and rear passengers
Driver's knee airbag
Front seatbelt load limiters and pre-tensioners with clamping locking tongue (CLT)
2 nd -row seatbelts with load limiters and pre-tensioners (both sides)/3-point center seatbelt
Airbag on/off switch for front passenger
Seatbelt reminder for the driver and front passenger
Child seat anchorage
Manual seatbelt height adjustment on B-pillar
Childproof safety lock
Speed-sensitive door lock
Tyre pressure monitoring system (TPMS)
Visual VIN

CONVENIENCE
Electronic cruise control
Windshield wiper de-icer
Electro-chromatic inside rearview mirror
Headlamp leveling device
Intermittent rear wiper

Automatic light control and rain-sensing wipers in front
Tinted, noise-control windshield glass
Outside door mirrors that can be electrically controlled, folded and heated
Tinted front-door glass
Privacy glass (Rear-door windows, quarter windows, tailgate window)
Safety powered windows
One-touch triple-turn signal lamp
Supervision cluster with 7" colour TFT-LCD trip computer
Supervision cluster with 3.5" monochrome TFT-LCD trip computer
Luggage cover and load net & grocery hook in cargo bay (5 seater)
Variable luggage shelf
Cargo barrier net
Standard 8" smart audio with rear-view camera
HD 9.2" navigation with rear-view camera
3-dimensional around view monitoring system (AVM)
Six speakers
USB and Aux. slot
Bluetooth telephone connectivity with streamed audio
Audio remote control switches on steering wheel
Car connectivity (Apple Carplay & Google Android Auto)
Smart powered tailgate
Front obstacle warning system (4 sensors) with 2-stage alarm
Rear obstacle warning system (4 sensors) with 3-stage alarm
Dual smart-key system with window control and auto closing function
12V power outlets & USB charger on console back
220V power inverter

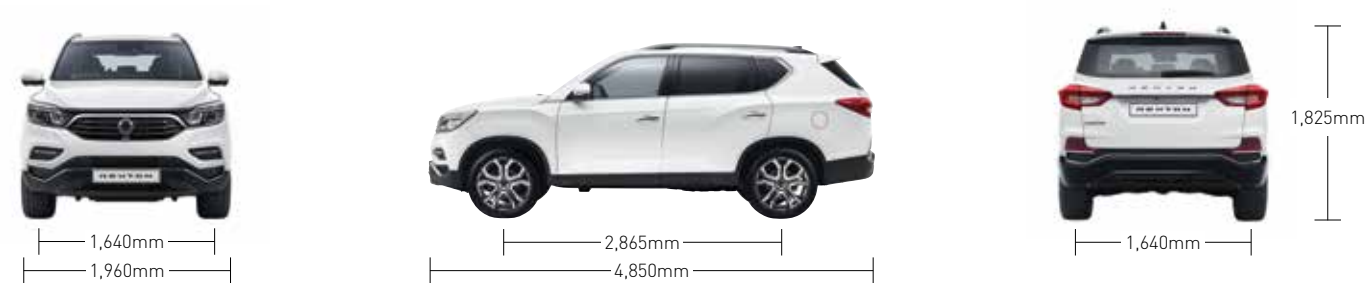
AIR CLIMATE
Automatic air conditioning system (dual-zone control)
Rear manual air conditioning system for 7 seater
Automatic defogging system
Cabin air quality control system
Cluster ionizer
Rear air vent on centre console
Positive temperature coefficient (PTC) heater

TECHNICAL DATA

ENGINE		Diesel 2.2 (5-seater)				Diesel 2.2 (7-seater)			
DRIVEN WHEELS		2WD		Part time 4WD		2WD		Part time 4WD	
TRANSMISSION		6MT	7AT	6MT	7AT	6MT	7AT	6MT	7AT
EMISSION		Euro 6		Euro 6		Euro 6		Euro 6	
EXTERIOR DIMENSIONS	Overall length	mm		4,850					
	Overall width	mm		1,960					
	Overall height	mm		1,825 (with roof rack)					
	Wheelbase	mm		2,865					
	Tread	Front	mm	1,640					
		Rear	mm	1,640					
	Overhang	Front	mm	895					
		Rear	mm	1,090					
	Minimum ground clearance	mm		224 (with independent rear suspension) / 203 (with 5-link rear suspension)					
	Minimum turning radius	m		5.5					
WEIGHT	Gross vehicle weight	kg		2,750		2,860		2,850	
	Kerb weight	kg		1,995-2,065		2,005-2,106		2,095-2,165	
	Gross trailer weight	Braked	kg	2,700		2,700		2,700	
		Unbraked	kg						
ENGINE	Fuel	-		Diesel					
	Fuel tank	L		70					
	Capacity	cc		2,157					
	Bore X stroke	mm		86.2 X 92.4					
	Compression ratio	-		15.5:1					
	Number of cylinders	-		4 in-line					
PERFORMANCE	Max. power	kW/rpm		133.1 / 4,000					
		ps/rpm		181 / 4,000					
	Max. torque	Nm/rpm		400 / 1,400-2,800		420 / 1,600-2,600		400 / 1,400-2,800	
		kg.m/rpm		40.7 / 1,400-2,800		42.8 / 1,600-2,600		40.7 / 1,400-2,800	
FUEL CONSUMPTION	Max. speed	km/h		185				185	
	Urban	L/100km		9.6		10.1		9.8	
	Extra urban	L/100km		6.4		6.8		6.5	
	Combined	L/100km		7.6		8.0		7.7	
	CO ₂ (combined)	g/km		199		211		204	

• The fuel economy can vary according to road conditions or driver's habits. • The above technical data can vary slightly by regional certification requirements or sales specifications.

DIMENSIONS



*Some of features may be optional or not be available according to market. Please contact your local dealer for the exact details regarding vehicles sold in your area.