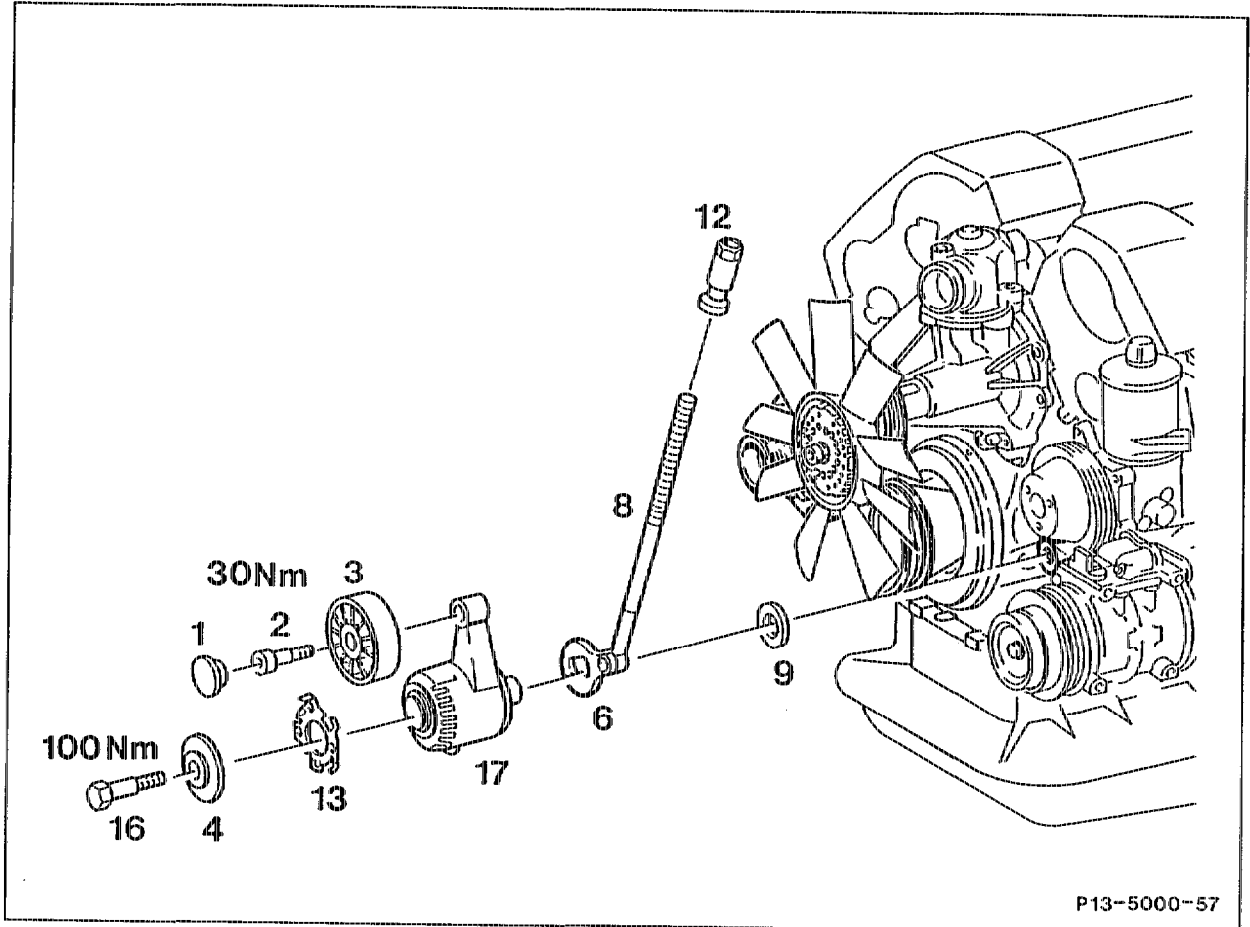


13-3450 Removing and Installing tensioning device

Preceding work:
Poly V-belt removed (13-3420).

Operation no. of operation texts and work units or standard texts
and flat rates
13-1202-4001

1st version



Tensioning device remove, install (100 Nm) (steps 1 to 3).

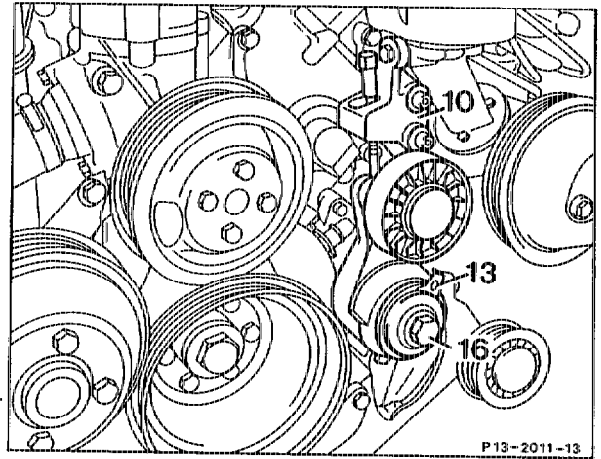
Tightening torques in Nm

| | |
|--|-----|
| Fastening bolt of tensioning device | 100 |
| Bolt of tensioning pulley to bracket (M8×40) | 30 |

Removing, installing

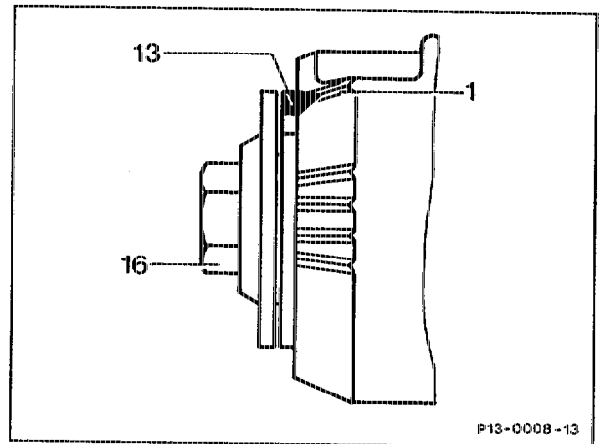
- 1 Remove poly V-belt (13-3420).
- 2 Unscrew bolt (16).
Tightening torque 100 Nm.

Engine 119.960



Installation instruction

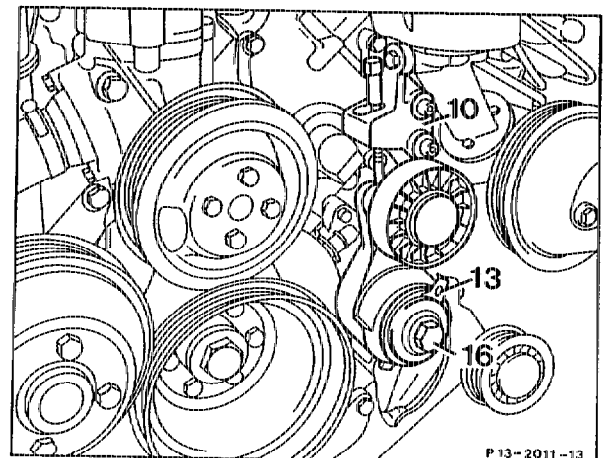
The setting pointer must be aligned with that of the first marking (1) in the untensioned condition.



- 3 Remove tensioning nut (12) together with tensioning bolt (8) from bracket (10) at the power steering pump.

Installation is performed in the reverse order.

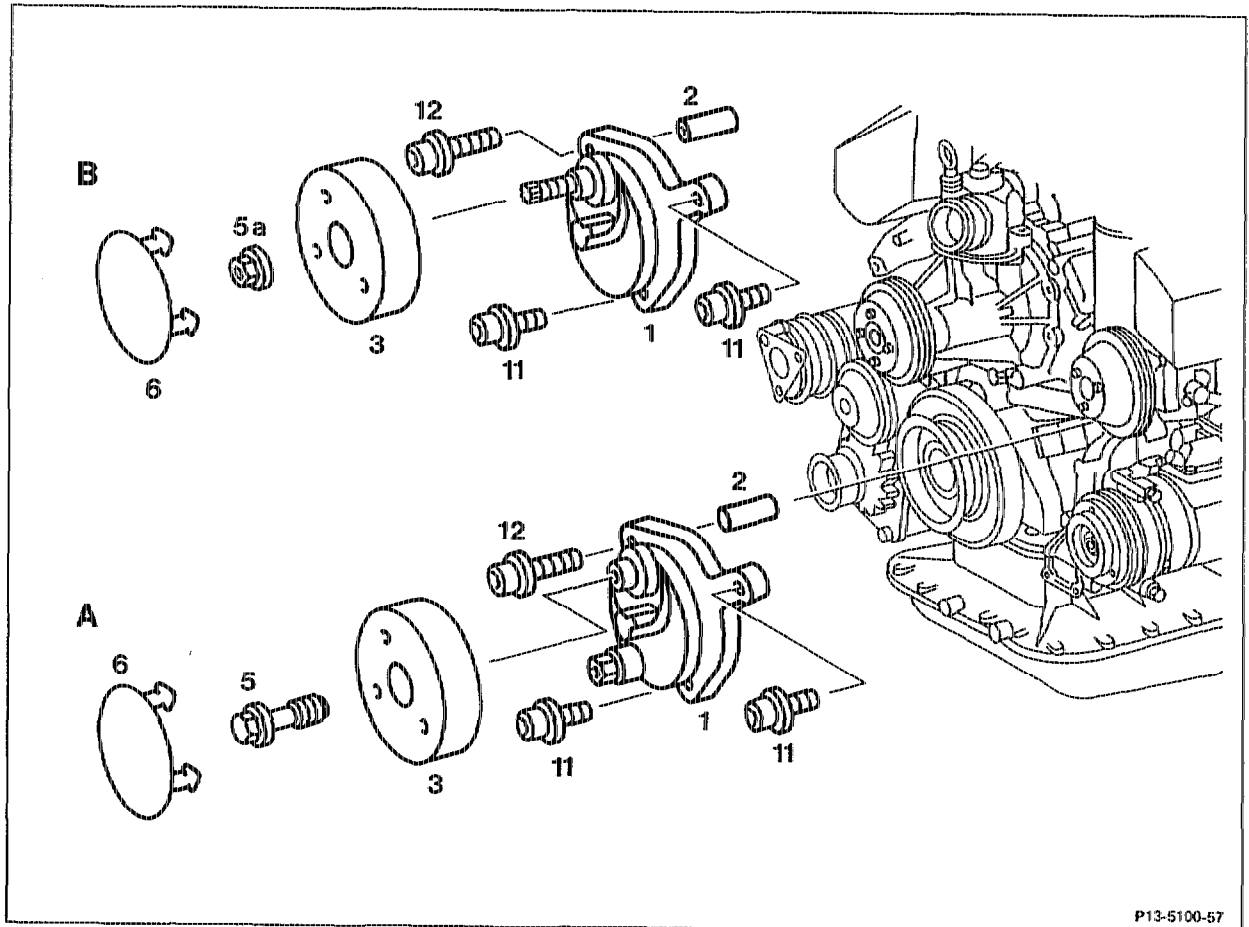
Engine 119.960



Preceding work:
Poly V-belt removed (13-3420).

Operation no. of operation texts and work units or standard texts
and flat rates
13-3200

2nd and 3rd version



P13-5100-57

| | | | |
|---|-------------|----|--------------------------------------|
| A | 2nd version | 11 | M8 x 30 hexagon socket bolt + washer |
| B | 3rd version | 12 | M8 x 30 hexagon socket bolt + washer |

| | |
|---|----------------------------|
| End cover (6) | take off, fit on. |
| 2nd version: bolt (5) | unscrew, screw on (25 Nm). |
| 3rd version: nut (5a) | unscrew, screw on (25 Nm). |
| Tensioning pulley (3) | remove, install. |
| Bolts (11) and (12) | unscrew, screw on (21 Nm). |
| Tensioning device (1) with sleeve (2) | remove, install. |

Tightening torques in Nm

| | |
|----------------------------|----|
| Bolts of tensioning pulley | 25 |
| Bolts of tensioning device | 21 |

Special tool

