

Downloaded From

 **DriveInside**  
car shopping made easy **.com**



CAR BROCHURE

Toyota Etios

# ETIOS

*Q*CLASS

 **TOYOTA**  
Quality Revolution



**QSERVICE**  
Quick | Qualified | Quality

**UNMATCHED WARRANTY\***

3 years / 1,00,000kms  
\*Conditions Apply

For more info, visit [www.toyotaetios.in](http://www.toyotaetios.in)

Note: Vehicles pictured and specifications detailed in this brochure may vary between models and equipment. Addition of extra features may change figures in this chart. Toyota Kirloskar Motor Pvt. Ltd. reserves the right to alter any details of specifications and equipment without notice. Actual colour of vehicle body & upholstery might differ slightly from the images depicted in this brochure. Accessories shown not a part of standard equipment.

*World First. India First.* *My First*

is your Etios dealer



Introducing

A class of car offering value for money,  
not just luxury.

A class of car born from an ability to win the heart,  
not just beat a record.

A class of car that is engineered with passion,  
not just physics.

A class of car that is designed to have character,  
not just style.

A class of car that promises a lifetime of pride,  
not just driving pleasure.

A class of car that is well beyond normal classification.

A car in a class of its own.

**Q**CLASS



# QCLASS

## Q Class Style

Expressing the design concept of Bold Simplicity: a balance of form and function that creates a minimal, yet distinct, identity.

## Q Class Luxury

Thoughtfully designed to provide ample legroom and headroom.

## Q Class Comfort

A brand-new suspension for a relaxed, comfortable drive even on the longest of journeys.





# Q CLASS REVOLUTION

Q Class was born of meticulous research and understanding of the way India drives – road conditions, weather variations, practices and sensibilities that are uniquely Indian. Toyota's finest engineers stepped up to the challenge of creating a car that would belong to a class of its own.



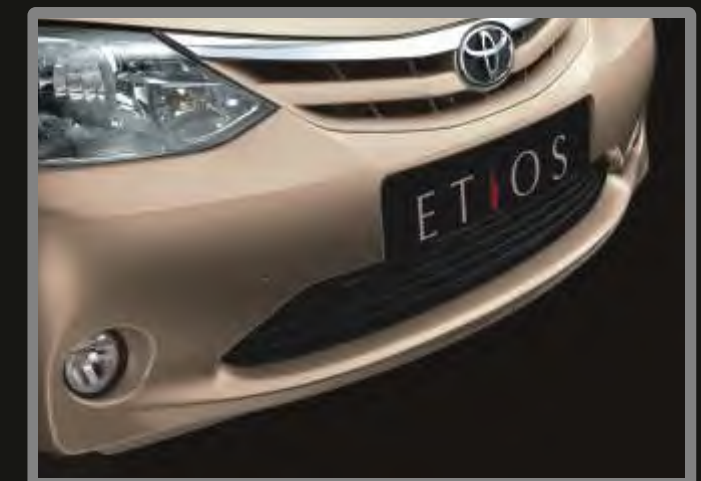


# Q CLASS STYLE

**Bold Simplicity** takes the design of the Etios to a higher level. A strong front grille that seems to smile. Crisp crease lines on the bonnet. Distinctive character lines that run along the side of the car to accent its form. Balancing form and function, the Etios is a style statement in motion.



**Distinctive character lines**  
The sculpted lines that run along the side of the car enhance its visual appeal.



**Front bumper**  
A bold front bumper makes a strong but refined statement.



**Front grille**  
The distinctive 'smiling' front grille of the Etios is among the first things you will notice about the car.



**Side skirt**  
Classy and aesthetically crafted side-skirts create a premium and urban look befitting a Q Class owner.



# Q CLASS LUXURY

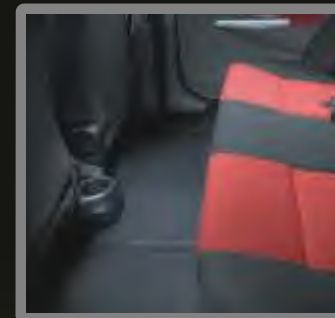
Ergonomically designed interiors make the Etios extremely spacious and comfortable. Ample headroom and legroom. A spacious boot. And many thoughtful storage spaces that makes room for everything you need.



**Cooled glove box**  
A spacious 13 litre cooled glove box gives you the luxury of storing all your belongings and more.



**Storage space/ Bottle holder**  
An exclusive feature offering seven 1 litre bottle holders within easy reach.



**Rear floor**  
A well thought out flat rear floor type design offers ease of movement for rear seat passengers.

**Luggage space**  
Best-in-class luggage space (595 litres) that has a low loading height, hence reducing strain during loading and unloading.





# Q CLASS COMFORT

Experience world-class comfort for greater driving pleasure.  
The Etios offers the best of features for a relaxed and  
effortless drive.



#### AC with clean-air filter

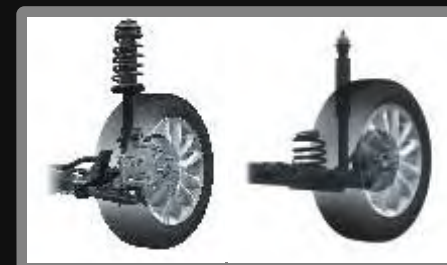
A newly developed AC with powerful blowers and multi-directional vents for superior cooling. Plus an air-purifying filter that ensures clean and fresh air.



#### Steering wheel

Ergonomically designed sporty steering wheel with integrated audio controls puts comfort at your fingertips.

**EPS with tilt**  
Electric power steering with tilt function offers a supremely comfortable drive.



#### Suspension

Optimised suspension setting for front and rear, offering exceptional comfort and stability.



#### 2 DIN DVD audio with remote

Top of the line DVD/ Audio player with remote control, making the drive an entertaining one for all passengers.



# Q CLASS PERFORMANCE

Cruise ahead with the Etios. From practical drivability to excellent fuel efficiency, the Etios clearly stays ahead in the race.



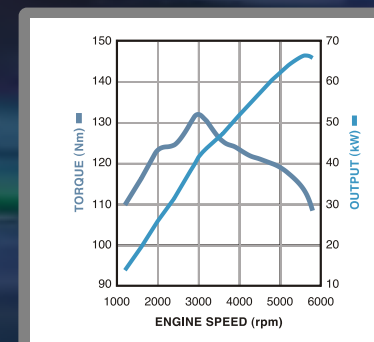
#### Highly fuel efficient and lightweight engine

Lean engine construction design, improved anti-knocking performance, and electronic throttle control contribute to high fuel efficiency.



#### Low emissions

A Toyota first design that integrates the exhaust manifold with the cylinder head resulting in low emissions.



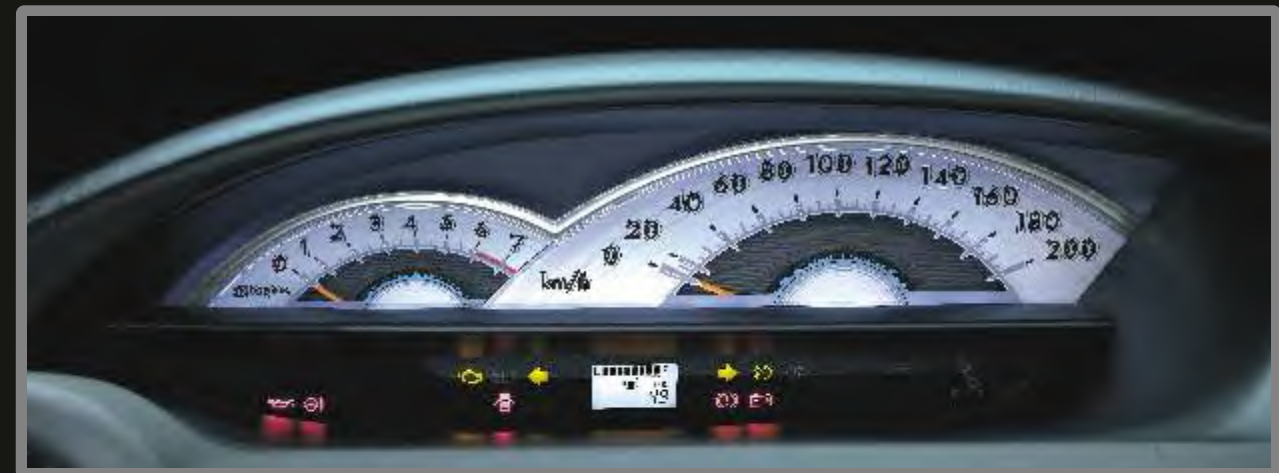
#### High performance engine

16 Valve DOHC engine with best-in-class torque at low engine rpm offers unparalleled driving performance.



# Q CLASS SAFETY

Feel protected while on the move. With a host of active and passive safety measures, the Etios ensures maximum safety and peace of mind to its passengers.



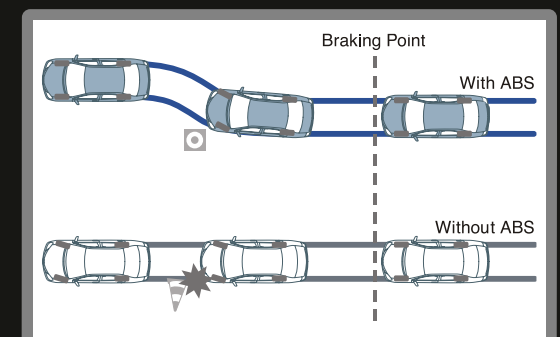
## Centre meter design

Optimally positioned to minimise the time the driver takes his/ her eyes off the road, ensuring a safe drive.



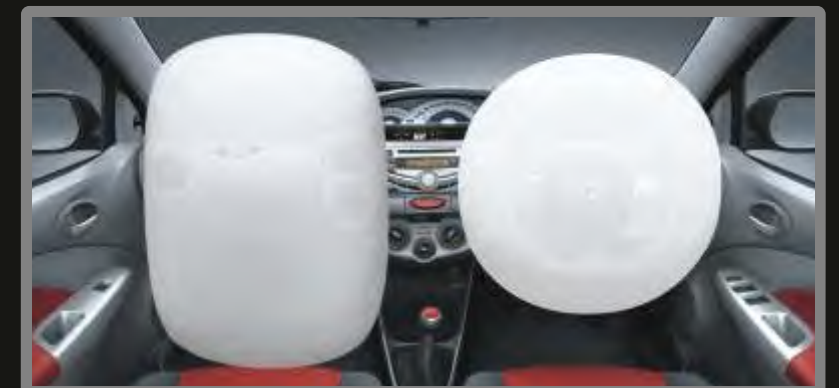
## Impact absorbing body structure

Designed to absorb impact across the body to keep the cabin intact and provide maximum protection for all on board.



## ABS with EBD

Anti-lock braking system with EBD ensures complete vehicle control and a smooth stop while braking suddenly.



## SRS airbags

SRS airbags inflate to reduce the head and upper torso's impact on the steering wheel or the dash panel, in case of a frontal collision.



# Q CLASS CUSTOMISATION



## Accessories shown:

Radiator chrome grille | Bumper corner protector |  
Front bumper spoiler | Side visor | Side skirt

**Accessories shown:**  
Side visor | Trunk spoiler | Rear door lid garnish |  
Bumper corner protector | Rear bumper spoiler | Side skirt



# Q CLASS SHADES TO CHOOSE FROM



Symphony Silver



Harmony Beige



Serene Bluish Silver



Vermilion Red



Celestial Black



White

## INTERIORS



Black - J, G



Black & Grey - V



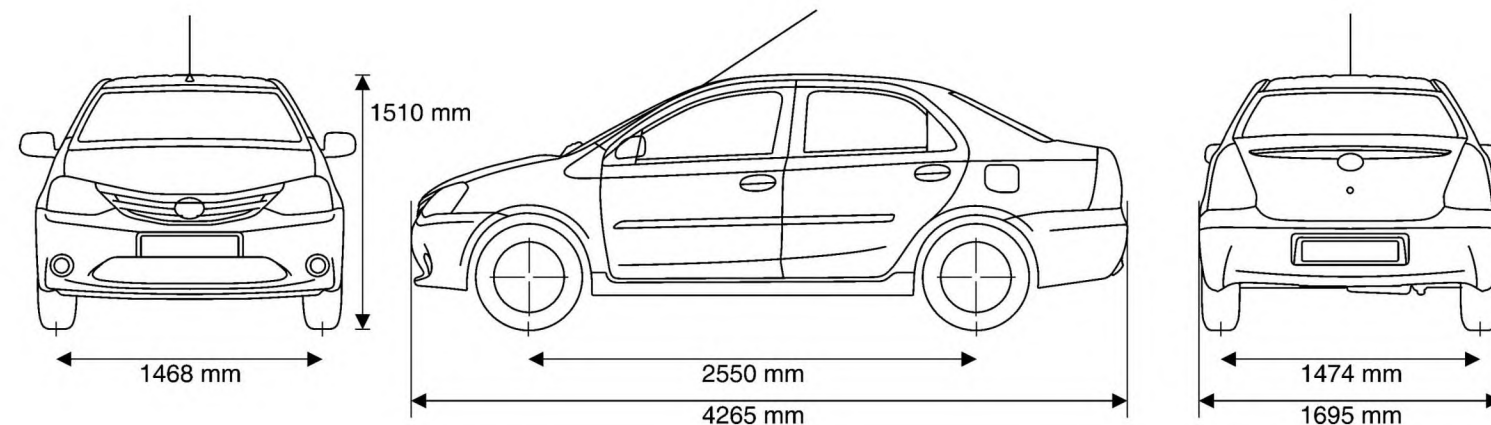
Black & Red - VX



# Q CLASS

## SPECIFICATIONS

GRADE		J	G	V	VX
ENGINE	Type	2NR-FE, Gasoline, 4 Cylinder 16V, DOHC			
	Size	1496 cm <sup>3</sup> (cc)			
	Max. Power	90 PS (66 kW) @ 5600 rpm			
	Max. Torque	132 Nm (13.46 kg-m) @ 3000 rpm			
	Fuel Supply System	(EFI) Electronic Fuel Injection			
TRANSMISSION	Type	5 Speed Manual			
SUSPENSION	Front	MacPherson Strut			
	Rear	Torsion Beam			
BRAKES	Front	Ventilated Disc			
	Rear	Drum			
DIMENSIONS	Overall Length x Width x Height	4265 mm x 1695 mm x 1510 mm			
	Wheelbase	2550 mm			
	Ground Clearance	170 mm			
	Fuel Tank Capacity	45 Litres			
	Turning Circle Radius	4.9 m			
	Boot Space	595 Litres			
	Tyre Size	175 / 65 R14		185 / 60 R15	
	Kerb Weight	900 kg	915 kg	930 kg	



GRADE		J	G	V	VX
EXTERIOR	Front Grille	Matte Black	Chrome Ornament	Chrome Ornament	Chrome Ornament
	Body Coloured Bumpers	✓	✓	✓	✓
	Front Fog Lamps	×	×	✓	✓
	Body Coloured Door Handles	×	✓	w/ Chrome Insert	
	Body Coloured ORVM	×	✓	✓	✓
	Side Protection Moulding	×	w/ Chrome Insert		
	B Pillar Black-Out	×	✓	✓	✓
	Intermittent Wiper	×	✓	✓	✓
	Side Skirt	×	×	×	✓
	Tubeless Tyres	✓	✓	✓	✓
	12 Spoke Alloy Wheels	×	×	✓	✓
	Full Wheel Caps	✓	✓	×	×
	Roof Mounted Antenna	×	×	✓	✓
	Chrome Garnish on Boot	×	✓	✓	✓
COMFORT & CONVENIENCE	Air Conditioner with Heater & Clean Air Filter	✓	✓	✓	✓
	Power Windows	×	✓	✓	✓
	Electric Power Steering	×	✓	✓	✓
	Central Locking	×	✓	✓	✓
	Cooled Glove Box	✓	✓	✓	✓
	Front Cabin Lights	✓	✓	✓	✓
	Front Power Outlet (12V)	×	✓	✓	✓
	Sporty Front Headrest	✓	✓	✓	✓
	Pillow Type Rear Headrest	✓	✓	✓	✓
	Rear Defogger	×	×	✓	✓
	Tilt Steering	×	✓	✓	✓
	Tachometer	×	×	✓	✓
	Digital Tripmeter	✓	✓	✓	✓
	Audio System (With Remote)	×	×	2 DIN 1CD MP3 AM/FM	2 DIN DVD MP3 AM/FM
	Speakers	×	4	4	4
	Audio Controls on Steering Wheel	×	×	×	✓
	USB & Aux-in Ready Audio	×	×	✓	✓
INTERIOR	Internally Adjustable ORVM	✓	✓	✓	✓
	Luggage Room Lamp	✓	✓	✓	✓
	Fabric Insert Door Trim	×	×	✓	✓
	Fabric Upholstery	Single Tone (Black)		Dual Tone (Black & Grey)	Dual Tone (Black & Red)
	Leather Wrapped Steering Wheel	×	×	×	✓
	7 Bottle Holders (1 Litre)	✓	✓	✓	✓
	Front Door Pockets	✓	✓	✓	✓
	Rear Door Pockets	✓	✓	✓	✓
	Day/Night Inside Rear View Mirror	✓	✓	✓	✓
	Driver - Side Sunvisor	Visor Only		w/ Mirror	
	Passenger - Side Sunvisor	Visor Only		w/ Mirror	
	Chrome Accented Air Vents	×	×	✓	✓
	Chrome Accented Shift Knob	×	×	×	✓
	Assist Grip with Coat Hook	1	3	3	3
	Remote Fuel Lid Opener	✓	✓	✓	✓
	Remote Tailgate Opener	✓	✓	✓	✓
SAFETY & SECURITY	SRS Airbags	×	Opt*	D+P	D+P
	ABS (Anti-Lock Braking System)	×	Opt*	✓	✓
	EBD (Electronic Brake Distribution)	×	Opt*	✓	✓
	Immobilizer	✓	✓	✓	✓
	Keyless Entry	×	✓	✓	✓
	Driver Seatbelt Warning	×	Opt*	✓	✓
	Door Ajar Warning	✓	✓	✓	✓

\*Available with Safety Package