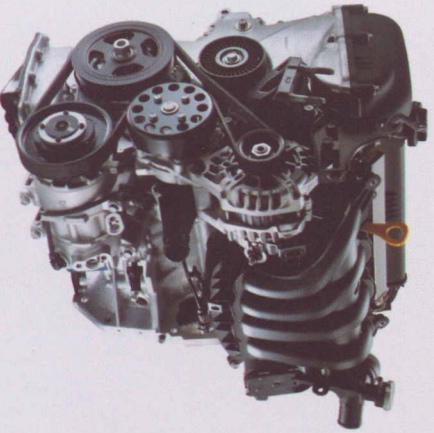


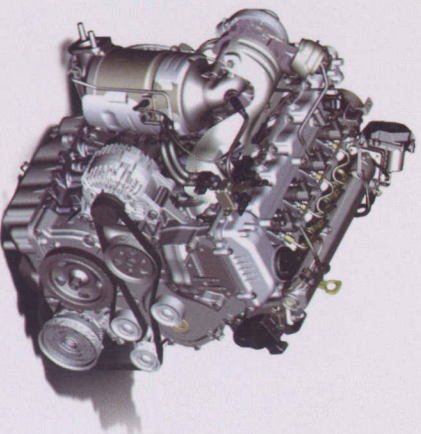


Choice of Engines



Petrol (1.6 L VTVT & 1.4 L VTVT)

The 1.6 L VTVT engine is a powerhouse which is refined to deliver best-in-segment, 123ps@6300 rpm leaving the competition way behind. The engine is tuned to generate optimum efficiency without compromising on power. The new Verma also offers a 1.4 L VTVT which boasts of similarly unbeatable performance and best-in-segment mileage of 17.43 Km/L (ARAI).



Diesel (1.6 L CRDI VGT & 1.4 L CRDI)

The Diesel Verma is available in two configurations: 1.6 L CRDI VGT and 1.4 L CRDI. Both these engines are designed to deliver dynamic performance and unmatched mileage. The 1.6 L offers segment leading power of 128 ps @ 4000 rpm and torque of 26.5 kgm while the 1.4 L delivers a mileage of 23.5 Km/L (ARAI) with unprecedented performance.



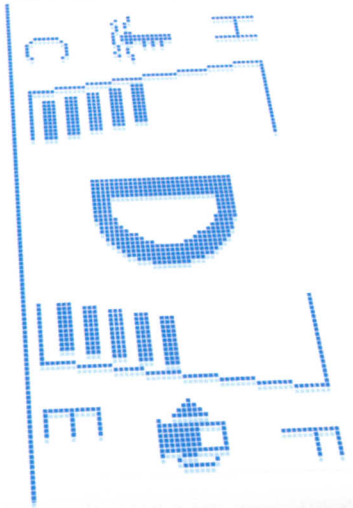
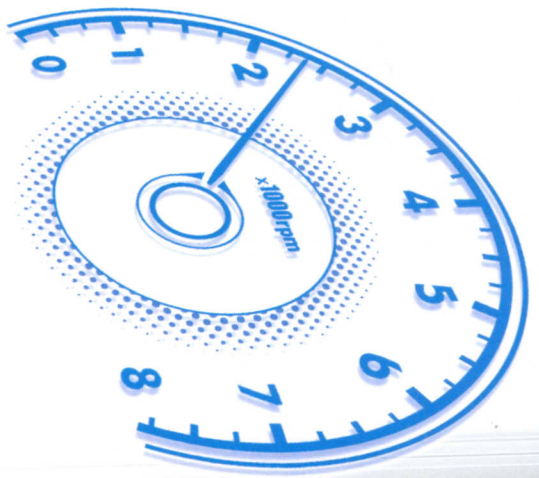
Automatic Transmission

While variable oil pressure allows for smoother shifting, the 4-speed H-Matic auto transmission offers highly responsive, sporty acceleration, like that of a manual transmission.



Manual Transmission

The 5 speed petrol and 6 speed diesel manual gearboxes provide smooth, noiseless shifting of gears thanks to the key and ball-type synchronesh, optimised gear-tooth shaped and precision machining.



EOD Driving





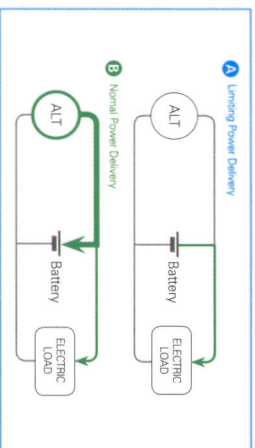
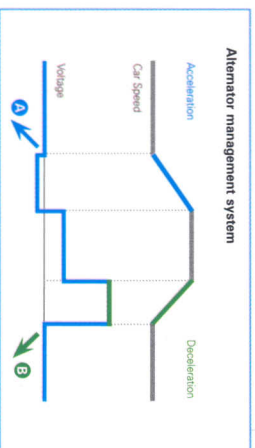
ECO Drive

The new Verna comes packed with features and technology to help you save fuel and ultimately, the environment. This is in line with Hyundai's environmental approach to building cars that make a difference.

The Alternator Management System in the new Verna controls the power supply to the battery to relieve engine workload, reducing fuel consumption and emissions while decelerating and idling, and enhances performance while accelerating.

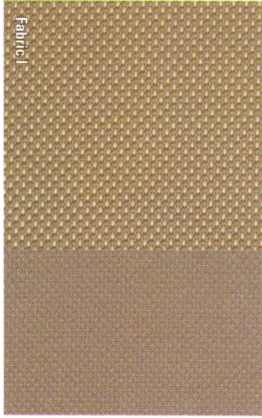
Then there's the gear shift-indicator (manual transmission) which prompts you to change gears efficiently and the ECO indicator (automatic transmission) which glows when the car is at its fuel efficient best.

At Hyundai we believe all these little innovations ultimately make a big difference when it comes to your world, and our environment.





Interior Trim



1.4 VTVT and 1.4 CRDI



1.6 VTVT, 1.6 CRDI, VGT, 1.6 SX VTVT and 1.6 SX CRDI, VGT



1.6 SX VTVT (O) and 1.6 SX CRDI, VGT (O)
1.6 SX VTVT Automatic and 1.6 SX CRDI, VGT Automatic

TECHNICAL SPECIFICATIONS

Fuel	Petrol				Diesel	
	1.4	1.6	1.6	1.4	1.6	1.6
Transmission	Manual	Automatic	Manual	Automatic	Manual	Automatic
Engine Variant	1.4	1.6	1.6	1.4	1.6	1.6
Engine	Displacement	1,396	1,591	1,591	1,396	1,582
	Maximum Power (ps / rpm)	107 / 6,300	123.05 / 6,300	123.05 / 6,300	90 / 4,000	128.08 / 4,000
	Maximum Torque (kgm / rpm)	13.8 / 5,000	15.8 / 4,200	15.8 / 4,200	22.43 / 750-2,750	26.50 / 1,900-2,750
	Transmission	5-speed	5-speed	4-speed	6-speed	6-speed
Dimensions	Overall Length (mm)	4,370		4,370		4,370
	Overall Width (mm)	1,700		1,700		1,700
	Overall Height (mm)	1,475		1,475		1,475
	Wheelbase (mm)	2,570		2,570		2,570
	Turning Radius (m)	5.2		5.2		5.2
Tyres	185/65 R 15		195/55 R 16	195/55 R 16	185/65 R 15	195/55 R 16
Suspension	Front	McPherson struts with coil spring		McPherson struts with coil spring		McPherson struts with coil spring
	Rear	Couple Torsion Beam Axle		Couple Torsion Beam Axle		Couple Torsion Beam Axle
Shock Absorbers	Gas Type		Gas Type		Gas Type	

Actual body color may differ slightly from the printed photos in this catalogue. All specifications and features are subject to change without prior notice. Please check with Hyundai authorised dealer for exact specifications.

EXTERIOR COLOURS



Sleek Silver



Carbon Grey



Stone Beige



Phantom Black



Crystal White



Purple Fantasia

KEY FEATURES

Variant	1.4 VTTV 1.4 CRDi		1.6 VTTV 1.6 CRDi VGT		1.6 SX VTTV 1.6 SX CRDi VGT		1.6 SX (0) VTTV 1.6 SX (0) CRDi VGT	
	Dual Side & Curtain *	-	Driver	-	S	-	S	
Safety	Airbags	-	-	-	-	-	S	
	ABS with EBD	-	S	-	S	-	S	
	Rear Disc Brakes *	-	S	-	S	-	S	
	Impact Sensing Door Unlock *	-	S	-	S	-	S	
	Speed Sensing Door Lock *	-	-	-	-	-	S	
	Front Fog Lamps	S	S	S	S	S	S [#]	
	Clutch Lock System *	S	S	S	S	S	S	
	Central Locking System	S	S	S	S	S	S	
	Immobilizer	S	S	S	S	S	S	
	Full Wheel Cover	S	-	-	-	-	-	
Exterior	16" Alloy Wheels	-	-	-	S	-	S	
	Chrome Tipped Dual Muffler *	S	S	S	S	S	S	
	LED Turn Indicators on Outside Mirror	S	S	S	S	S	S	
	Chrome Outside Door Handles	-	-	-	-	-	S	
	Rear Defogger with Timer	-	S	-	S	-	S	
	Chrome Front Grille	S	S	S	S	S	S	
	Two Tone Chrome Rear Garnish	-	S	-	S	-	S	
	Door Black out Tapes	S	S	S	S	S	S	
	Blue Interior Illumination	S	S	S	S	S	S	
	Supervision Cluster *	-	-	-	-	-	S	
Interior	High Gloss Black & Woodgrain Interiors	-	S	-	S	-	S	
	Power Windows with Driver Side Auto Down	-	S (Time Lag)	-	S (Time Lag)	-	S (Time Lag)	
	Chrome Interior Package	-	S	-	S	-	S	
	Smart Key with Illuminated Start Button *	-	-	-	-	-	-	
	Keyless Entry - Integrated on Folding Key	S	S	S	S	S	-	
	Rear View Camera with Display on ECM	-	-	-	-	-	S	
	Rear Parking Sensors *	-	S	-	S	-	S	
	Bluetooth Connectivity with Steering Mounted Call Controls *	-	S	-	S	-	S	
	Air Conditioner	S	S (Automatic)	-	S (Automatic)	-	S (Automatic)	
	Clean Air (Cluster Ionizer) *	-	S	-	S	-	S	
Comfort & Convenience	Electro-Chronic (Auto Dim) Inside Rear View Mirror (ECM) *	-	-	-	S	-	S	
	Electrically Adjustable Outside Rear View Mirror	-	S	-	S	-	S	
	Electrically Foldable Outside Mirror *	-	-	-	-	-	S	
	Driver Information Display	S	S	S	S	S	S	
	Electric Power Steering with Tilt Function	S	S	S	S	S	S	
	Front Seat Back Pockets	S	S	S	S	S	S	
	Sunglass Holder	-	S	-	S	-	S	
	Driver & Passenger Vanity Mirror	-	S	-	S	-	S	
	Theater Dimming Interior Lamp	-	S	-	S	-	S	
	Front Map Lamp	S	S	S	S	S	S	
Seating	Cooled Glove Box	-	-	-	S	-	S	
	Luggage Net & Hook	-	-	-	S	-	S	
	MT Shift Indicator	S	S	S	S	S	S (ECO Indicator for AT) *	
	Alternator Management System	S	S	S	S	S	S	
	Height Adjustable Front Seatbelts	-	S	-	S	-	S	
	Front Seat Armrest - Sliding with Box	-	S	-	S	-	S	
	Rear Center Armrest with Box	S	S	S	S	S	S	
	Tilt Adjustable Driver Seat	-	S	-	S	-	S	
	Adjustable Rear Headrest	-	-	-	-	-	S	
	Full Cloth Upholstery	S	S	-	S	-	S	
Audio	Leather Upholstery	-	-	-	-	-	S	
	2 DIN MP3 Player with AUX-in & USB	S	S	S	S	S	S	
	iPod Cable	-	S	-	S	-	S	
	4 Speakers with Tweeters	S	S	S	S	S	S	
Steering Mounted Audio Remote	-	S	-	S	-	S		
Audio Hand Remote	S	S	S	S	S	S		

* S - Standard, # Only in MT



16" Alloy Wheels available with SX and Automatic variants

DIMENSIONS

unit : mm





**NEW
THINKING.
NEW
POSSIBILITIES.**

Hyundai Motor India Limited
www.hyundai.co.in

5th-6th Floor, Corporate One - Baani Building, Plot No-5, Commercial Centre,
Jasola, New Delhi-110076 Tel: 011-66022000 Fax: 011-66022201-02

NEW THINKING. NEW POSSIBILITIES.

People's expectations toward individual mobility require more than just a convenient means of transportation. The old understanding of cars has become outdated. A car represents individual lifestyles, and it becomes an integral part of their lives. At the same time, the automobile industry has experienced seismic change. Hyundai Motor Company has grown rapidly to become one of the largest automakers, backed by world class production capability and superior quality. We have now reached a point where we need a qualitative approach to bring bigger ideas and relevant solutions to our customers. This is an opportunity to move forward and we have developed a new brand slogan that encapsulates our willingness to take a big leap. Led by our new slogan and the new thinking underlying it, we will become a company that keeps challenging itself to unlock new possibilities for people and the planet.