

PAJERO *SFX*



What's a little sand
between you and your big adventure?



Genetically coded for adventure. The Pajero stalks the earth, in search of the unusual. Eating up miles, taking on the rough and the smooth, and reaching places hitherto uncharted.

A chunk of earth and a slice of sky.
Rush of adrenaline in between.



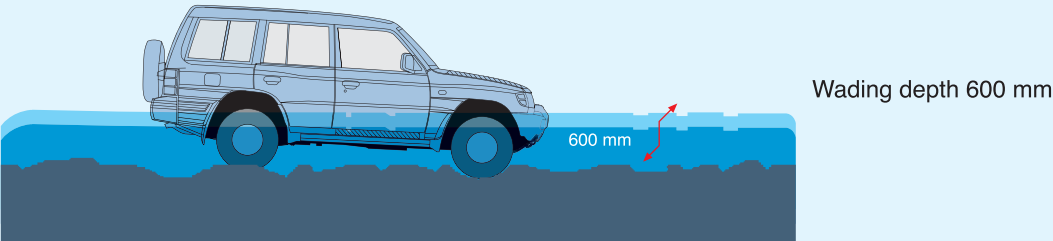
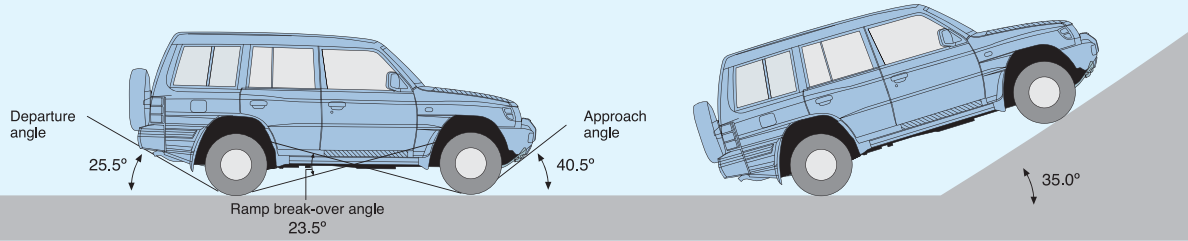
No speed-breakers
when you're chasing excitement.



Drive Mitsubishi.
Keep Winning.

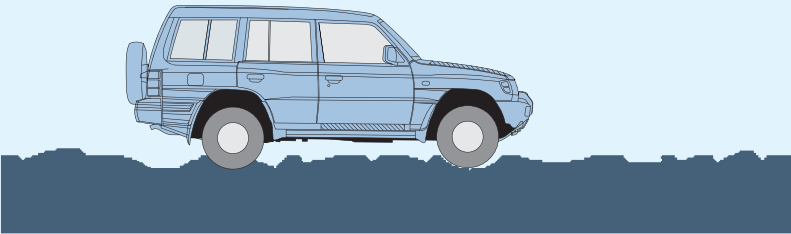


Off-Road Mobility



Suspension - Ideal for rough roads

Front - Double wishbone torsion bar with stabiliser bar.
Rear - 3-link coil spring rigid axle with stabiliser bar.



Unparalleled Performance

Distances shrink in a Pajero. Imagine sitting in a strong yet lightweight high-tensile steel frame that's super-secure. Top that by adding on solid cross-members for increased torsional rigidity. And what you get is excellent stability and an extra-smooth ride.
Naturally, coming from a superior 'rallying' lineage, your Pajero is endowed with a world-class power-train and the Super Select 4WD (SS4-II). Rest assured, you're in an SUV with lots of attitude and lots of spunk.

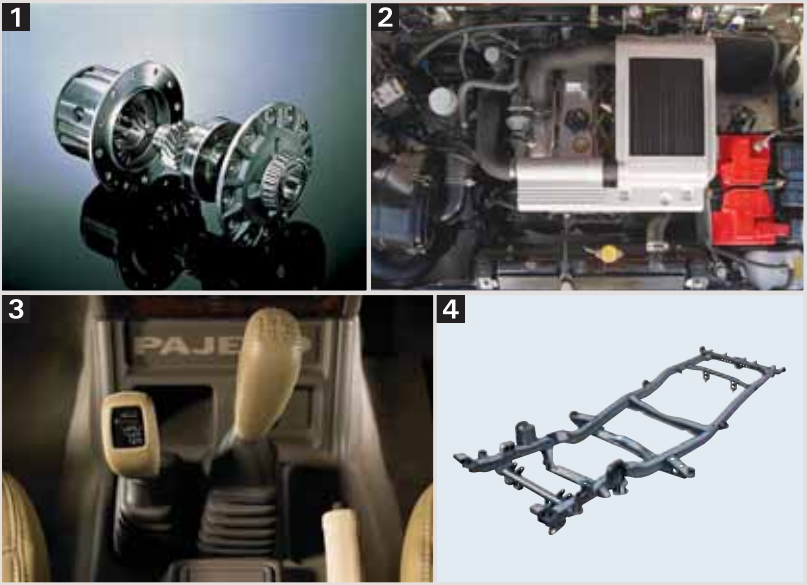
Super Select 4WD (SS4-II)

2H (2WD High Range) For normal roads. Only the rear wheels get power, which means a smoother, quieter, more fuel efficient ride.	4H (4WD High Range) For rougher, hazardous conditions. More torque for all wheels for better traction, which means greater grip.	4HLC (4WD High Range with locked centre differential) For sure off-road handling. Four-wheel performance shifts into low gear for maximum traction through mud or sand.	4LLC (4WD Low Range with locked centre differential) For steep inclines, snow, mud or sand. Provides greater torque for climbing or descending steep inclines at very slow speeds or navigating effortlessly through deep snow, mud and sand.

1 Limited Slip Differential (LSD) – For excellent response and fine correction during cornering. Which means improved all-round performance, particularly during high speed driving.

2 2.8 Litre Turbo Charged Intercooled Diesel Engine – For that 'inner strength' which drives you through the roughest conditions. Supported by the unique balance of power and torque the diesel engine is ideal for on and off-road driving.

3 5 Speed Gear Box – For unstoppable fun driving. Ensured by Pajero's smooth shifting 5-speed manual gearbox with well-matched gear ratios.



4 Framed for Strength – For increased off-road mobility. Ensured by the reinforced ladder frame which withstands the beatings of the toughest terrain.



Flint crumbles when exhilaration calls.



Safety First, Always.

Just short of an armoured tank. That's the kind of impact-resistance and steely strength that the Pajero's rigid shell gives you. Whatever the terrain – rugged, water-logged, smooth, slushy or sandy, you'll feel very safe in your Pajero.

Then we went ahead and reinforced it some more. With multiple extra features, that'll take care of any emergency, any contingency. In fact, Pajero's your biggest line of defence, whatever the world chooses to put on your driving track.



Front Dual Air Bags – For extra safety in case of collision. Pajero has front SRS airbags for both driver and front passenger. Used together with the 3-point ELR seatbelts, they provide an excellent degree of collision safety.

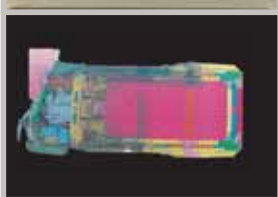
3-Point ELR Seat Belts – For safety during sudden braking. The ELR (Emergency Locking Retractors) ensure that the seat belts automatically engage and retract to keep you safely in your seat.



Side Impact Bars – For greater impact-resistance. Reinforcements along the doors and cabin walls absorb impact force in a side collision, thereby protecting you.



Multimeter – For greater peace-of-mind. The multimeter with altimeter, barometer, inclinometer and outside temperature indicator reassuringly indicate the safe limit to which you can explore with your Pajero.



Extra-Strong Body Construction – For extra-protection. Beams and support pillars throughout the Pajero's construction use high-tensile steel to surround the cabin in an extra-rigid protective frame.



Disc brakes



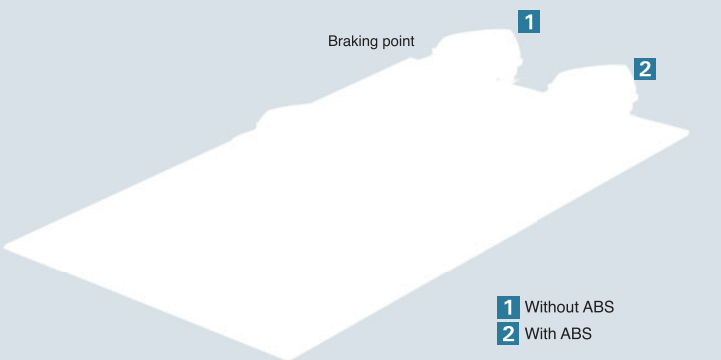
Anti-trapping power windows



3-Point ELR seat belts

Anti-lock Braking System

The Anti-lock Braking System (ABS) uses a system of sensors that independently activate the brakes thousands of times per second when the brake pedal is pressed, reducing stopping distance by preventing the brakes from locking, and allowing the driver to steer around obstacles while slowing down.



Muscular Exterior



Strikingly handsome, the Pajero has a powerful build that makes you gasp at first glance. So wild, in brazenly attractive shades. Yet, so distinctive that you rule the road, wherever you go. Get up close and slowly caress the bold lines, the sinews, the styling... and you've befriended your Pajero.



New headlamp cluster



New roof-top sticker



Inter cooler vent



Dual tone spare tyre cover



Wider footboard



Six spoke alloy wheels



Power antenna



Chromed door mirrors



New leather seats



The Inside Story



Slip into the driver's seat and belt up. Surrounded by a heady leather feel, the roominess, an enormous cargo space and those dials and dash-lights you are set for the journey ahead. And when your Pajero starts purring, its magnitude hits you... as you break fresh ground by the mile, by the minute, effortlessly.

Because, from inside your Pajero, the world is totally flat. And completely cushioned to boot.



Leather wrapped gear and drive shift lever



Leather door pads



Wood print panels



Parking sensor with rear-view camera



More Features. More Comfort.

Tuck-in, fold-away, freed up space... your Pajero is a completely 'out-of-the-box' SUV. Never cramps your style one bit. Every conceivable bit of space is so optimally utilized, that it opens out or folds away, just as you please. Making more room for your

comfort, your luggage and your lifestyle. Add to it the leather-flourishes, the handy controls and the thoughtful add-ons, and you have a veritable palace on wheels.



Tilt adjustable power steering



Extendable sun visor



Air conditioning with 2nd & 3rd row ducts



Cabin heater



Rear door stopper



Power windows



Tuner/MP3 CD player with USB



Centre arm rest with stowage function



Front seats with lumbar support



Magazine pocket



Rear cup holder



Glove box

Boot Space

To provide as much carrying space as possible, the 2nd row can have the seat backs folded down, and then the seats themselves tumbled down and out of the way. You can also fold down just one part of the 50:50 split 2nd row for carrying extra long cargo. The 3rd row seats can be easily folded up, then unfolded again when you need the extra seating capacity. This gives you plenty of room for luggage or bulky cargo.



Height and tilt adjustable front row headrest



Map lamps



Utility tool kit



Rear AC control

Specifications

ITEM	MODEL		PAJERO 2.8 SFX
Dimensions & Weight	Overall length	mm	4755
	Overall width	mm	1775
	Overall height	mm	1900
	Wheelbase	mm	2725
	Track	mm	1465 (Front), 1480 (Rear)
	Ground clearance	mm	205
	Kerb weight	Kg	2155
	Gross vehicle weight	Kg	2800
	Seating capacity		6
Performance	Minimum turning radius	m	5.9
	Maximum climbing ability	tan θ	0.7
	Wading depth	mm	600
	Approach angle	degrees	40.5
	Ramp breakover angle	degrees	23.5
	Departure angle	degrees	25.5
	Top speed	Km/hr	150
Engine	Type		2.8 litre 8 valve SOHC Turbocharged Intercooler Diesel
	Displacement	cc	2835
	Bore x Stroke	mm	95.0 x 100.0
	Max.output	PS(KW)/rpm	
	BS III		118.6 (87.2) @ 4000 rpm
	BS IV		108.7 (80) @ 4000 rpm
	Max. torque	kg-m(Nm)/rpm	
	BS III		29.8 (292) @ 2000 rpm
	BS IV		28.05 (275) @ 2000 rpm
Fuel System	Fuel supply system		Injection Pump
	Tank capacity	litres	92
Drive System	Type		Super Select 4WD
Transmission	Type		5-speed manual
Steering	Type		Hydraulic Variable Power Assisted
Suspensions	Front		Double wishbone torsion bar with stabiliser bar
	Rear		3-link coil spring rigid axle with stabiliser bar
Brakes	Front		15" ventilated discs
	Rear		15" drum in disc
Tyres & Wheels	Tyres		265 / 70 R 15 112S Tubeless
	Wheels		15 X 7.00 JJ Alloy Wheel

Standard Equipment & Features

ITEM				
Exterior	Chromed radiator grill			
	Clear lens headlamp cluster			
	Muscular wheel arches			
	Silver coloured front and rear skid plate			
	Wider foot board			
	Large front bumper garnish with grill guard			
	Chromed windshield moulding			
	Rear fog lamps			
	Rear window defogger			
	Chrome side and rear drip mouldings			
	Front variable intermittent wiper and washer			
	Rear intermittent wiper and washer			
	Chromed door handles and door mirrors			
	Chromed rear combination lamp mouldings			
	Rear towing hook			
	Dual tone lockable spare tyre cover			
	Slide type quarter window glass			
Interior	New soft brown interiors			
	Wood-print panels			
	Chrome-accent inner door handles			
	Illuminated cigarette lighter			
	Front cup holders			
	Electrically adjustable door mirrors with defogger			
	Ashtrays	Front illuminated		
		2nd row passenger's on door		
	Accessory socket (Front)			
	Front door pockets			
	Driver's footrest			
	Getting on and off grip assist on rear doors			
	Sunvisors	Driver side	Extendable sunvisor with ticket holder.	
		Front passenger side	Extendable sunvisor with lidded vanity mirror	
	Large-sized assist grips x 5			
	Day/night rearview mirror			
	Tuner, MP3 CD player with USB			
	Cargo room accessory socket with inspection lamp			
	Cargo room hook x 4			
	Lockable glove box			
Cockpit	Leather-wrapped 4-spoke steering wheel			
	Leather-wrapped gear shift and drive selector knob			
	Multimeter			
	Headlamp leveling device, Rheostat			
	Illuminated key cylinder, Digital quartz clock			
Seats	Material	Leather		
	Front	Sliding and reclining adjustable		
		Fully flat function		
		Lumbar support and side support adjustable		
		Seat back pockets		
		Height and tilt adjustable see-through headrests		
	2nd row	Front facing seat with walk-in system		
		Split folding seat function		
		Fully flat function		
		Reclining adjustable		
		Side armrest with cup holders		
	3rd row	Height adjustable see-through headrests		
		Front-facing seat		
		Fully foldable		
		Height adjustable see-through headrests		
Safety		Seatbelts	Front	3-point ELR seatbelts x 2
			Adjustable shoulder anchor	
	2nd & 3rd row		3-point ELR seatbelts x 2	
	Front SRS air bags			
	Anti-lock braking system			
	Front and rear door impact bars			
	Collapsible steering column			
	High-mount stop lamp			
	Child-protection rear door locks			
	Functional	Super select 4WD		
Power steering with tilt-adjustable steering column				
Detachable full tool set with pocket light				
Transfer cover and engine under protector				
Central door locking with keyless entry system (incl. tailgate lock)				
Anti-trapping power windows				
Rear heater control				
Automatic power antenna				
Dual air conditioner with 2nd and 3rd row A/C ducts				
Interior lighting - Room lamps, Map lamps, Cargo room lamp,				
Front door courtesy lamps				
Anti-theft alarm				
Parking sensor with rear-view camera				

Exterior
Dual Tones



Flame



Carbon



Navy



Granite



Deep Purple



Graphite



Limestone



PAJERO *SFX*

THE INCREDIBLE 4X4



Hindustan Motors Ltd., Chennai Car Plant, Adhigathur, Kadambathur
Tiruvallur District, Tamil Nadu - 631 203. Tel: 044 2764 1400.
Fax: 044 2764 2029 www.mitsubishi-motors.co.in

www.facebook.com/MitsubishiMotorsIndia www.twitter.com/MitsubishiIndia

Accessories shown here may not be part of standard equipment.
Dimensions and specifications are subject to change without prior notice.

Dealer Stamp